

# HAMCO CATTLE CO.

## “12th Annual Angus Bull Sale”



**Saturday March 20, 2010**

**Dr. David & Shelley Hamilton  
Embryo Genetics Ltd.**

**Albert & Gail Hamilton  
Glen & Carleen Hamilton**

# Hamco Cattle Co.

We would like to sincerely thank all of our many valued customers & friends who have supported our program over the past 12 years. We invite you to attend our 12th Annual Bull Sale at the farm south of Glenboro on Saturday, March 20, 2010 at 1:00 p.m. We hope you can join us before the sale to view the bulls & enjoy Angus Beef on a bun. Please come even if you don't need a bull this year.

We are truly thankful and honored that so many good cattle operations have used our bulls. We work very hard to try and produce the best bulls we can through an aggressive AI & ET program, as well as walking high quality herd bulls. We select our bulls from a purebred herd of 550 cows. We screen and cull our bulls at least 4 times through their production phase, & end up selling the top 40% in the sale. As a result, only the best sell & this is definitely the best set of bulls we have offered for sale.

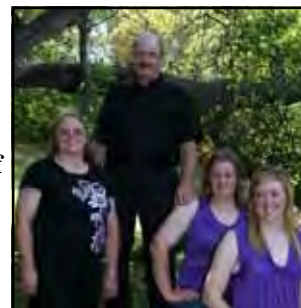


Trent, Albert, Gail, Ian, Travis

The selection of a herd bull is a very important decision for your farm as your herd bull contributes 50% of your calf's genetics. For the most part, herd improvement comes from the bulls and it has been estimated that over 80% of herd improvement is directly attributed to bull selection. We feel we can provide the genetics to take your herd in the direction you need to go. The bulls we have to offer for sale are selected on performance, structural soundness, breeding soundness evaluations, temperament and calving ease. We have a good selection of bulls suitable for heifers \*\*\*, many bulls that would work on heifers and cows \*\*, and some we recommend only using on cows \* (see calving ease rating on each bull in the catalogue). As breeders we believe we should provide as much information as possible so you can make an informed decision.

To facilitate your decision we have attempted to provide you with as much current information as possible in the catalogue. The bulls were on 112 day home test (Oct 23/09-Feb 12/10) and the information in this catalogue is current to Feb 12, 2010. Scrotal measurements were also done Feb 12 and at this age yearling bulls will add 1 -1.5 cm/month so the scrotals will be approximately 1.5 cm larger by sale day. Two yr old bulls were weighed & breeding soundness evaluations were done on Feb 27, 2010.

Again this year we have done CUP certified ultrasound measurements (Ultra Beef) on the bulls to give you, our customers even more information for use in your selection. As a result you will see clip marks on the bulls where the ultrasound measurements were taken. We pictured a number of bulls but many good bulls were not pictured due to time constraints. Hopefully many of you can view them before or the day of the sale.



Glen, Carleen, Larissa, Jennalee

All bulls in the sale will have a satisfactory breeding soundness evaluation prior to the sale and are fully insurable on sale day. Some bulls catalogued will be out of the sale due to not passing the breeding soundness examination by sale day.

For the fourth year we are offering a select group of 2 year old bulls in our sale. Most are specially held over virgin bulls and a few were used this past spring and are experienced breeders.

Again we have a quiet group of bulls that are easy to handle. We would like to thank Cory Manning, Stewart Bertram, and Mark Abbey for all their hard work & dedication for helping us feed and manage the cow herd and bulls. Also a big thank you to all our friends & neighbors that have helped us before & after the sale.

An Angus bull is the king of crossbreeding and will provide performance and desirable carcass traits to your herd while maintaining calving ease, high conversion rates, maternal strength, easy fleshing ability and the Angus vigor at birth. The solid red color of the Red Angus will cross very well with almost any colored herd or crossbred herd. Remember all Red Angus bulls are homozygous red, & homozygous polled. The Black Angus bulls will bring the dominant black hide color when desired along with all the desirable Angus traits including homozygous polled. The Angus cross females will make great mother cows. The resulting hybrid vigor is still one of the best deals in the cattle industry.



David, Shelley, Derek, Julie

Our program's main target is to produce Angus bulls for the commercial producer and we are honored that our bulls have entered many top notch commercial programs. Managing a larger herd forces us to think like a commercial producer. We feed out about 300 of our own cattle per year and this has certainly taught us which ones are the right kind for today's market. We believe we have a number of bulls in this sale that would offer some excellent genetics to purebred herds as well.

Please call us if you have any questions about our bulls or our program. You can view the bulls anytime prior to the sale at the farm or on sale day. On a busy sale day we often don't have a chance to thank everyone individually, but we certainly appreciate your attendance at our sale. Thank you. The Hamiltons

# Saturday March 20, 2010

## 1:00 pm at Hamco Cattle Co. Glenboro MB

### Offering 141 Lots

73 Red Angus Yearling Bulls  
27 Red Angus 2 year old Bulls  
26 Black Angus Yearling Bulls  
15 Black Angus 2 year old Bulls

No Yearling Bulls  
Sold Prior to the Sale

10:30 am Viewing of the Bulls

12:00 Noon Lunch

Angus Beef on a Bun  
Prepared by Ken Dalglish

1:00 pm *Bull Sale*

Direct Line to Sale Barn

(204) 827-2358 or (204) 827-2000

(204) 325-3635 David (cell)

(204) 526-5105 Glen (cell)

(204) 476-6925 Ken (cell)

(403) 650-9028 Brent (cell)

(204) 825-7786 Jack (cell)

Auctioneer:

Brent Carey, Stavely Alberta (403) 650-9028 (cell)  
(403) 549-2478 (home)

Ring Men:

Ken Dalglish, Neepawa Manitoba (204) 476-6925 (cell)  
(204) 476-3356 (work)

Jack Lewis, Crystal City Manitoba (204) 825-7786 (cell)  
(204) 873-2441 (home)

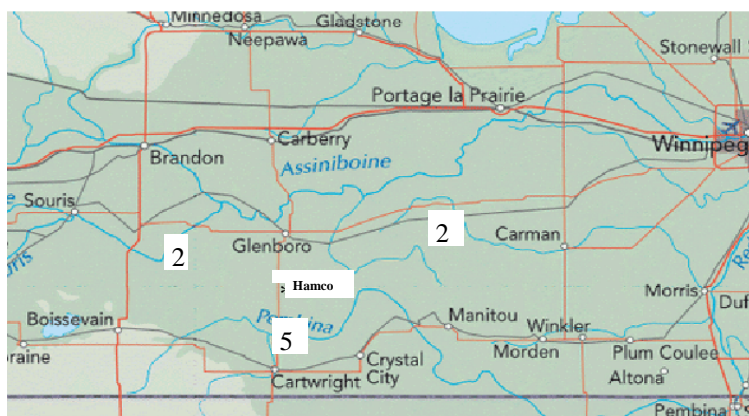
Photography: Grant & Lauralee Rolston, Coalhurst, AB

Special Offer to Bull Buyers

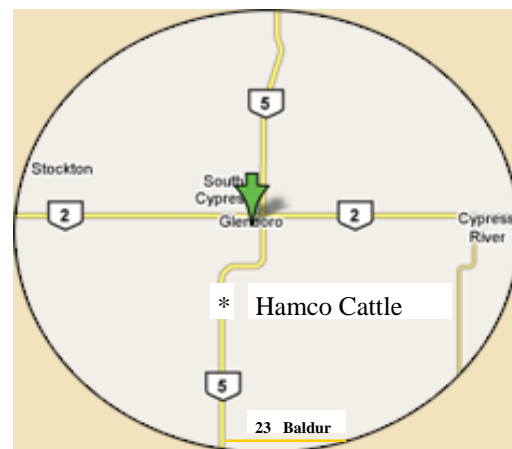
We are offering our delayed payment plan again this year.  
You pay 50% of the purchase price sale day + 50% plus a  
\$35.00 surcharge on Dec 1, 2010

Haul your own bull sale day & receive \$50 off your bull.

Buyers Draw - 3 chances for a \$150.00 sale credit



7 miles S on Hwy 5 from the junction of Hwy 2 & 5 at Glenboro  
or 6 miles N on Hwy 5 from the junction Hwy 23 & 5



— For More Information —

**Dr. David & Shelley Hamilton**

(204) 822-3054 (home)

(204) 325-3635 (cell)

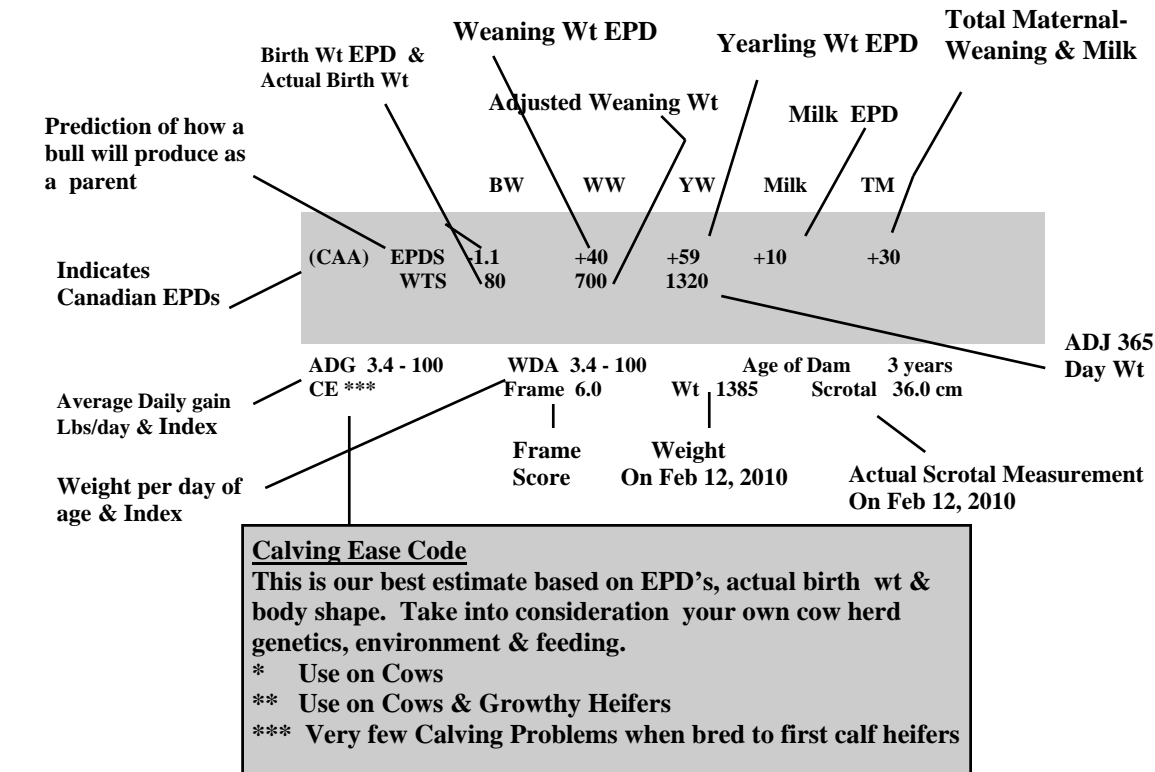
**Albert & Glen Hamilton**

(204) 827-2358

(204) 526-5105 (cell)

View Catalogue Online at [Hamcocattleco.com](http://Hamcocattleco.com)

## How To Read This Catalogue



### EXPECTED PROGENY DIFFERENCES (EPDS)

EPDs are an estimate of how future progeny of each sire can be expected to perform in each of the traits listed. All EPD's are expressed in pounds, either plus or minus.

**Birth Weight - BW** - Predicts the difference in average birth weight of a bull's calves compared to the progeny of an Average Red and Black Angus bull.

**Weaning Weight - WW** - Indicates the ability of a sire's calves to grow from birth to weaning compared to an average bull

**Yearling Weight - YW** - Growth from birth to yearling, compared to the average

**Milk** - A predictor of a sire's genetic merit for milk and mothering ability as expressed in his daughters as compared to daughters of an average Red and Black Angus bull.

**Total Maternal - TM** - Predicts the difference in weaning weights of the sire's daughters progeny due to the combination of growth genetics and milking ability

Combined American & Canadian EPD's	BW	WW	YW	Milk	TM
2009 Canadian Red Angus Breed Averages	+0.7	+29	+52	+15	+29
2009 Canadian Black Angus Breed Averages	+3.0	+40	+71	+17	+37

### ULTRASOUND DATA

Ultrasound data on our bulls was collected by CUP certified technician, Shari Beamish (Ultra Beef) and analyzed by the CUP Lab in Iowa.

**Lean Meat Yield (LMY)** - Cutability is the percentage of Lean Meat in a carcass. Yield grade is a very economically important factor in marketing carcasses. With a high genetic potential, this trait can be an important objective in a breeding program.

**Rib Eye Area (Rea)** - The Rib eye (measured in square inches) is a measurement of muscle in the carcass. Heritability 38%

**Percent Intramuscular Fat (% IMF)** - Marbling is the measurement of % intramuscular fat between the 12-13th ribs. A comparative chart is listed below.

% IMF	Marbling degree	Canada Quality Grade	US Quality Grade
2.3-3.9	Slight 0-4.0	A A	Select
4.0-9.7	Small to moderate	A A A	Choice
9.9-12.3	Slightly abundant to moderately abundant	A A A - Prime	Prime

The ideal level of marbling in a beef carcass is AAA or higher, based on Canadian Beef Grading Agency Standards. Marbling is moderately heritable (31%).

**Rump Fat Thickness** - Rump fat thickness (measured in inches) is the amount of external fat on the carcass. Rump fat is an indicator of carcass fat & the actual percent retail product from that carcass.

**Rib Fat Thickness** - Rib fat thickness (measured in inches) is a measure of the external fat on the carcass. Rib fat is another indicator of the % retail product of carcass. Fat is correlated to % retail product in the following way—the higher the fat thickness, the lower the percent retail of the carcass.

## Management of Hamco Bulls

The yearling bulls for sale were all born in late Jan, Feb, March of 2009 and were weaned on Oct 6,7, & 8, 2009. They did not receive any creep feed prior to weaning. The bulls were then developed on a carefully balanced total mixed ration (TMR). They were fed 50% alfalfa grass hay, 50% corn silage & the grain (oats, corn & supplement) was gradually increased over the first 2 months. By Dec 10, 2009, the bulls reached their final ration (dry matter basis) consisting of 30% alfalfa hay, 30% corn silage, 40% grain mix (oats, corn distillers, & supplement). The bulls never had more than 13 lbs of grain mix per head per day. The TMR ration gives us complete control of the ration & insures that every bull receives the exact same feed. Bulls developed on a high forage TMR ration should never develop acidosis & laminitis, & should be healthy & be able to perform for years. The bulls are developed in a 4 acre pen & get a lot of exercise & should be athletic & ready to breed. We will continue to develop the bulls after the sale. The two year old bulls were similarly managed as yearlings and then maintained on a high forage ration. They were fed silage & concentrate & free choice grass/alfalfa hay/straw since December.

## Health Status

This is a healthy group of bulls. They have all received 3 doses of MLV (IBR, BVD I & II, PI3, BRSV, Haemophilus) and 3 doses of 7 or 8-way blackleg vaccine. They have been treated with Vetomectin pour on twice. They have received 2 injections of Fusoguard - a foot rot vaccine that is effective in preventing foot rot - a condition you would certainly like to avoid in a breeding bull.

**All Bulls Screened  
Negative  
For BVD**

Pre Breeding (April) - (Calves) - MLV IBR/BVD I & II, PI3, BRSV, Haemophilus, & 7-way Blackleg

Pre Breeding - (Cows) - MLV IBR/BVD I & II, PI3, BRSV, Lepto

Mid July (preg check time) - Deworming on pasture (Vetomectin) & 7 - way Blackleg

Weaning (October) - IBR, BVD I & II, PI3, BRSV, Haemophilus (Booster) & Vetomectin & 8 - way Blackleg

January 8, 2010 - Fusoguard (Foot Rot vaccine) All bulls tested for BVD to identify any PI animals repeat Vetomectin

February 12, 2010 - Fusoguard (Foot Rot vaccine) Booster

February 27, 2010 - Weigh 2 yr olds, semen test, Booster Fusoguard, IBR/BVD I & II, PI3, BRSV, Haemophilus, 7 way Blackleg

March 10, 2010 - Will booster IBR/BVD I & II, PI3, BRSV, Haemophilus, 7 way Blackleg

Our whole herd is on a strategic vaccination protocol and parasite control program to assure our bulls stay healthy. However we know BVD is a potentially hidden yet devastating disease, & bulls can be carriers of the BVD virus (both from acute infection & as persistently infected (PI) carriers). All of our bulls were tested for BVD - persistent infection & *all tested negative*. You can be assured that when you purchase a bull from us that the bull has been tested PI negative and is not a carrier of the BVD virus and he is adequately vaccinated against BVD.

We manage the feeding of the bulls very carefully. With our high forage TMR ration we were able to start the bulls on feed gradually & experienced no digestive upsets. On a 112 day test, the 167 bulls had an ADG of 3.24 and WDA of 3.22. We will continue to develop the bulls after the sale & insure a smooth transition from our ration to the grass based ration they will receive during the breeding season.

## Sight Unseen Program

We would like you to attend our sale, but in this busy season, if this isn't possible, you can consider our sight unseen purchase program. Those who are interested in this plan are urged to call David with your specifications and discuss the offering, and he will gladly assist you with sale selections and have someone represent you on sale day. Every effort will be made to buy you the right bull or bulls, at the right price to make you a repeat customer. If for any reason you are not satisfied with any of the bulls you purchased on order, you are under no obligation to accept them. You can also call one of the phones during the sale and bid live. We have permanent phone lines this year in case cell phone reception is a problem.

## Hamco Bull Warranty

We guarantee to sell you a bull that is structurally sound, & has passed a breeding soundness evaluation. Should the bull fail to be a satisfactory breeder - unable to physically breed a cow or heifer, he will be replaced with a bull of equal value or credit given towards the purchase of another Hamco bull. In the event that your bull is a non-satisfactory breeder, we, the seller, will not, under any circumstances, be responsible for more than the original selling price of the bull in the sale. We will make sure you have a bull to get your cows bred. We however, will not provide replacement or adjustment for physical injury or mismanagement. We do not guarantee that semen collected from these bulls will freeze.

## Semen Rights

Hamco would like to retain the right to possibly collect semen from a few bulls in the sale. At the owners convenience and at our cost we reserve the right to collect semen from any bull in the sale for in herd use only. We can also collect and freeze semen for the new owner if they wish.

## Delayed Payment Plan

We again are offering our Delayed Payment Plan. You pay 50% of purchase price on sale day and 50% plus a \$35.00 surcharge on Dec 1, 2010. (Post dated cheque required sale day for the remaining amount). Registration papers will be transferred when the final payment is made.

## Free Board Till Spring

We will keep your bull till May 1, 2010 at no additional charge. The bulls are managed at the new owner's risk. If you wish to insure your bull it may be purchased on sale day. After May 1, 2010 we can continue to board your bull for \$2.00/day.

## Delivery

Free delivery on bulls up to 300 miles & then at cost. As well, we will deliver your bull free to central points in Western Canada or the US border. Delivery will be close to the date you request, but will be at our convenience. *Haul your own bull on sale day & receive \$50.00 off each bull.*

Volume Discounts on Bull Purchases  
Take advantage of our Volume Discounts  
on bulls purchased through this sale.

2 bulls - 2%

3 bulls - 3%

4 bulls - 4%

Up to 10% for 10 or more bulls

**REFERENCE SIRE**

**5 SONS SELL**

**Red Towaw Indeed 104H**

Reg # (Cdn) 942651

Red Buf Crk Coppertp 1665      Red ARSF Bold Edition 2A  
 S: **Red Glacier Divide 310**      D: **Red Towaw Molly 67C**  
 Red Glacier Lass                  Red Towaw Molly 34R

CAA	<u>B.W.</u>	<u>W.W.</u>	<u>Y.W.</u>	<u>Milk</u>	<u>TM</u>
EPD	+1.6	+34	+58	+23	39

- \* Produces easy fleshing, deep sided, good footed cattle.
- \* Hamco purchased an exclusive semen package from this elite bull.
- \* Has produced many high selling offspring- Mario 803M sold for \$26,000
- \* His claim to fame is his daughters - unbelievable udder structure which has increased his milk EPD to breed topping status
- \* Sired our high selling bull in 2005 to Kevin Archibald (\$4400) & our high selling bull in 2007 to Ringstead Ranch (\$7100).
- \* Certainly one of the best Red Angus bulls we have ever used in our herd.



We have 4 full ET brothers off the legendary Indeed 104H bull & the cow that we feel is definitely one of our Best cows - Mimi Robin Hood 40J. Her Dam Mimi 3418 was our pick from the Bieber production sale in 1997 & she has served us well. Mimi always passed on thickness & easy fleshing to all of her offspring. This is a proven mating as we have full sisters in the herd & sold 3 full brothers in our 2005 sale, including high seller 62P to Kevin Archibald for \$4400. We liked him so much we flushed 40J again to Indeed. These bulls represent some of the best Red Angus genetics available - extremely strong maternally & very good growth traits.

**Lot 1      RED HAMCO INDEED 124W**

DSH 124W    1533072    February 16, 2009 (AI) (ET)

RED GLACIER DIVIDE 310      RED BUF CRK COPPERTP 1665  
**RED TOWAW INDEED 104H**      RED GLACIER LASS  
 RED TOWAW MOLLY 67C      RED ARSF BOLD EDITION 2A  
    RED TOWAW MOLLY 34R  
 RED LMAN ROBIN HOOD 1174B      RED LMAN KING ROB 8621  
**RED HAMCO MIMI ROBIN HOOD 40J**      RED LEACHMAN PRILARK  
 RED BIEBER MIMI 3418      BJR YOGO OO2-104  
    RED BIEBER LINCOLN 1972

	<u>BW</u>	<u>WW</u>	<u>YW</u>	<u>Milk</u>	<u>TM</u>
(CAA) EPD	+1.9	+35	+61	+19	+36
WTS	100	740	1290		
ADG	3.34-103	WDA 3.52-109	Age of Recipient - 8 years		
CE *	Frame 6.8	WT 1270	Scrotal 34.5 cm		
Carcass	%LMY	REA	%IMF	Rib Fat	Rump Fat
	61.6	14.65	3.71	.35	.34

- \* A top end, long bodied, deep ribbed, dark red bull that was one of Brent Carey's picks of the pen.
- \* Performed well on test & good carcass data.

**Lot 2      RED HAMCO INDEED 128W**

DSH 128W    1533073    February 16, 2009 (AI) (ET)

RED GLACIER DIVIDE 310      RED BUF CRK COPPERTP 1665  
**RED TOWAW INDEED 104H**      RED GLACIER LASS  
 RED TOWAW MOLLY 67C      RED ARSF BOLD EDITION 2A  
    RED TOWAW MOLLY 34R  
 RED LMAN ROBIN HOOD 1174B      RED LMAN KING ROB 8621  
**RED HAMCO MIMI ROBIN HOOD 40J**      RED LEACHMAN PRILARK  
 RED BIEBER MIMI 3418      BJR YOGO OO2-104  
    RED BIEBER LINCOLN 1972

	<u>BW</u>	<u>WW</u>	<u>YW</u>	<u>Milk</u>	<u>TM</u>
(CAA) EPD	+1.9	+35	+61	+19	+36
WTS	100	714	1345		
ADG	3.79-117	WDA 3.63-113	Age of Recipient - 5 years		
CE *	Frame 6.5	WT 1310	Scrotal 36 cm		
Carcass	%LMY	REA	%IMF	Rib Fat	Rump Fat
	60.8	12.45	3.72	.31	.24

- \* A dark red, wide topped, powerful bull with a muscular hind quarter.
- \* Performed very well on test & a proven mating.
- \* One of Brent Carey's picks of the pen.



Lot 1 - Red Hamco Indeed 124W

Take a look at this bull in real life!!  
 One of Brent Carey picks of the pen!!

### Lot 3 **RED HAMCO INDEED 72W**

DSH 72W 1533070 February 7, 2009 (AI) (ET)

RED GLACIER DIVIDE 310  
**RED TOWAW INDEED 104H**  
 RED TOWAW MOLLY 67C

RED LMAN ROBIN HOOD 1174B  
**RED HAMCO MIMI ROBIN HOOD 40J**  
 RED BIEBER MIMI 3418

RED BUF CRK COPPERTP 1665  
 RED GLACIER LASS  
 RED ARSF BOLD EDITION 2A  
 RED TOWAW MOLLY 34R  
 RED LMAN KING ROB 8621  
 RED LEACHMAN PRILARK  
 BJR YOGO 002-104  
 RED BIEBER LINCOLN 1972

	BW	WW	YW	Milk	TM
(CAA) EPD	+1.9	+35	+61	+19	+36
WTS	77	572	1128		
ADG 3.46-107	WDA 3.01-94	Age of Recipient - 7 years			
CE **	Frame 5.0	WT 1115	Scrotal 38	cm	
Carcass	%LMY	REA	%IMF	Rib Fat	Rump Fat
	59.2	12.11	4.28	.36	.49

- \* A smaller framed, heavily muscled, correct made bull with a nice Angus head like his sire.
- \* Weaned a little lighter due to a lower quality recipient mother but gained very well on test.
- \* Could be used on heifers or cows.

### Lot 4 **RED HAMCO INDEED 73W**

DSH 73W 1533070 February 7, 2009 (AI) (ET)

RED GLACIER DIVIDE 310  
**RED TOWAW INDEED 104H**  
 RED TOWAW MOLLY 67C

RED LMAN ROBIN HOOD 1174B  
**RED HAMCO MIMI ROBIN HOOD 40J**  
 RED BIEBER MIMI 3418

RED BUF CRK COPPERTP 1665  
 RED GLACIER LASS  
 RED ARSF BOLD EDITION 2A  
 RED TOWAW MOLLY 34R  
 RED LMAN KING ROB 8621  
 RED LEACHMAN PRILARK  
 BJR YOGO 002-104  
 RED BIEBER LINCOLN 1972

	BW	WW	YW	Milk	TM
(CAA) EPD	+1.9	+35	+61	+19	+36
WTS	82	587	1136		
ADG 3.35-103	WDA 3.04-94	Age of Recipient - 5 years			
CE **	Frame 6.4	WT 1125	Scrotal 36.5	cm	
Carcass	%LMY	REA	%IMF	Rib Fat	Rump Fat
	62.2	13.51	4.49	.29	.27

- \* A smooth made, deep ribbed bull with additional muscle.
- \* His dam Robin Hood 40J is definitely one of our top cows & we are currently flushing her. Her full brother Explosion 60J was our all time high seller in our 2000 sale for \$8000.

### Lot 5 **RED HAMCO INDEED 88W**

DSH 88W 1533075 February 12, 2009 (AI) (ET)

RED GLACIER DIVIDE 310  
**RED TOWAW INDEED 104H**  
 RED TOWAW MOLLY 67C

RED LMAN ROBIN HOOD 1174B  
**RED HAMCO DIANN ROBIN HOOD 32J**  
 RED BIEBER DIANN 3371

RED BUF CRK COPPERTP 1665  
 RED GLACIER LASS  
 RED ARSF BOLD EDITION 2A  
 RED TOWAW MOLLY 34R  
 RED LMAN KING ROB 8621  
 RED LEACHMAN PRILARK  
 RED RAB ABE LINCOLN  
 RED BIEBER DIANN 2269

	BW	WW	YW	Milk	TM
(CAA) EPD	+1.9	+34	+64	+18	+35
WTS	80	642	1092		
ADG 3.20-99	WDA 3.00-93	Age of Recipient - 7 years			
CE **	Frame 5.5	WT 1090	Scrotal 36	cm	
Carcass	%LMY	REA	%IMF	Rib Fat	Rump Fat
	62.3	13.59	4.2	.29	.39

- \* A wide topped, thick quartered bull with lots of natural thickness that packs his muscle into a moderate framed package.
- \* Full ET brothers sold very well in our 2005 sale & they were all peas in a pod to this bull.
- \* His dam 32J (ELITE CAA Dam) is definitely one of our top cows & always produced good ones.



Lot 5 - Red Hamco Indeed 88W

#### Reasons to Buy a Hamco Bull!!

- 1) Bulls are selected from a group of 250 bulls & only the good bulls make the cut and sell.
- 2) Our herd is on the Canadian Angus Association performance program. Complete performance data is available & published—birth wt, weaning wt, yearling wt, ADG, WDA, frame score, scrotal circumference, EPD's, calving ease, & CUP certified carcass data.
- 3) All bulls sold have passed a semen test & a breeding soundness examination. The bull you buy will be a satisfactory breeder and is insurable at sale time.
- 4) Bulls are developed on a high forage TMR ration for optimal development.
- 5) Bulls are quite tame, and they have lots of exposure to people as they are walked through daily.
- 6) We will manage your bulls and keep developing them free of charge till May 1, 2010 and for \$2.00/day after May 1, so that you don't have to worry about your bull until you need him to breed.
- 7) We will deliver your bull to your farm or haul your own bull sale day and receive \$50.00 off each bull purchased.
- 8) Bulls are on a strategic vaccination program and they are tested *BVD PI negative*.
- 9) Large Genetic base—we use top AI sires, elite embryo donors, and strong herd bulls. We offer a diverse package of genetics and if you have bought bulls from us before, there are numerous unrelated bulls in the sale.
- 10) Breeder's Guarantee—In short, we will get your heifers or cows bred with a Red or Black Angus from Hamco. We always have spare bulls available in case a problem should arise.
- 11) Deferred payment program—50% sale day, 50% Dec 1, 2010 (plus \$35.00 surcharge) Post dated cheque sale day required for remaining balance.
- 12) Volume discount available

**REFERENCE SIRE  
3 SONS SELL**

**Red Fine Line Mulberry 26P**

Reg # (Cdn) 1237972

S: Red HR Rambo ET 91K      Red Silveiras Redford  
 Red Compass Mulberry 449M    D: Red DUS Fayette 8G  
 Red Brylor Miss ROC 20H      Red McDougall Fayette 59A

CAA B.W. W.W. Y.W. Milk TM  
 EPD +1.7 +48 +93 +23 +47

- \* Mulberry is the most respected, admired & talked about Red Angus Bull in modern times.
- \* He is the only bull to be back to back National Champion Bull & only one to be declared "Gold Show Bull of the Year" for 2 straight years
- \* Mulberry's Dam sold for \$70,00 at the Fineline Dispersal.
- \* His offspring continue to perform well & are highly sought after.



**Lot 6**    **RED HAMCO MULBERRY 82W**

LRH 82W    1507235    February 11, 2009    (AI)

RED COMPASS MULBERRY 449M    RED HR RAMBO ET 91K  
**RED FINE LINE MULBERRY 26P**    RED BRYLOR MISS ROC 20H  
 RED DUS FAYETTE 8G                RED SILVEIRAS REDFORD  
     RED MC DOUGALL FAYETTE 59A  
 RED RD JR ROBINHOOD                RED LMAN ROBIN HOOD 1174B  
**RED LEADHAN CARMELLA 22H**      RED RD LASSIE 15D  
 RED CIRCLE C CARMELLA 24E      RED CUMNOCK STAR 139Z  
     RED CARMELLA 2U OF EAST FORK

	BW	WW	YW	Milk	TM
(CAA) EPD	+1.2	+38	+76	+21	+40
WTS	88	718	1242		
ADG	3.21-100	WDA 3.31-103	Age of Dam - 11 years		
CE **	Frame 6.2	WT 1210	Scrotal 38.5 cm		
Carcass	%LMY REA	%IMF	Rib Fat	Rump Fat	
	55.4 13.07	3.47	.54	.37	

- \* This Mulberry son is very special - he is a dark red, moderate framed, deep ribbed bull that is built like a tank.
- \* Dam 22H an ELITE CAA dam is definitely one of our top cows always raised a top calf.
- \* 22H had a Cub son sell in our 2007 sale to Garry McDougall for \$4100, a Mac Fore 69H son sell in our 2005 sale to Wytinck Farms for \$4000. A full brother 96U sold to KEO Farms for \$3000 in our 2009 sale.

**Lot 7**    **RED HAMCO MULBERRY 132W**

DSH 132W    1507342    February 4, 2009    (AI)(twin)

RED COMPASS MULBERRY 449M    RED HR RAMBO ET 91K  
**RED FINE LINE MULBERRY 26P**    RED BRYLOR MISS ROC 20H  
 RED DUS FAYETTE 8G                RED SILVEIRAS REDFORD  
     RED MC DOUGALL FAYETTE 59A  
 RED TOWAW ENTERPRISE 18M      RED TOWAW INDEED 104H  
**RED HAMCO JESSI 280S**              RED TOWAW GOLD EDGE 4K  
 RED HAMCO JESSI 301P                RED BRYLOR JR 25L  
     RED HAMCO JESSIE 71M

	BW	WW	YW	Milk	TM
(CAA) EPD	+0.9	+39	+73	+22	+41
WTS	76	605	1185		
ADG	3.53-109	WDA 3.07-95	Age of Dam - 3 years		
CE ***	Frame 5.3	WT 1105	Scrotal 37 cm		
Carcass	%LMY REA	%IMF	Rib Fat	Rump Fat	
	58.5 12.76	4.78	.41	.43	

- \* A correct made, dark red, long bodied bull with a wide, deep hip.
- \* His dam is a good young cow out of the Jessi cow family.
- \* 280S had a Rambler son sell in our 2009 sale to Cory Dalzell for \$3400.
- \* One of Brent Carey's picks.
- \* Use on heifers



Lot 6 - Red Hamco Mulberry 82W

**Lot 8** **RED HAMCO MULBERRY 54W**

DSH 54W 1507299 February 4, 2009 (AI)

RED COMPASS MULBERRY 449M  
**RED FINE LINE MULBERRY 26P**  
 RED DUS FAYETTE 8G

RED HR RAMBO ET 91K  
 RED BRYLOR MISS ROC 20H  
 RED SILVEIRAS REDFORD  
 RED MC DOUGALL FAYETTE 59A

PRAIRIELANE IDEAL 1008-3025  
**RED HAMCO IDEAL 247T**  
 RED HAMCO MIMI ROBIN HOOD 40J

PRAIRIELANE IDEAL 8116-1008  
 PRAIRIELANE 6122 BANDOLER  
 RED LMAN ROBIN HOOD 1174B  
 RED BIEBER MIMI 3418

	BW	WW	YW	Milk	TM
(CAA) EPD	+3.9	+48	+95	+17	+41
WTS	91	761	1343		
ADG	3.65-113	WDA 3.42-106	Age of Dam - 2 years		
CE *	Frame 5.9	WT 1275	Scrotal 39.5 cm		
Carcass	%LMY	REA	%IMF	Rib Fat	Rump Fat
	61.5	13.65	4.1	.32	.4



Lot 8 - Red Hamco Mulberry 54W

- \* A dark red, moderate framed, long made, deep sided bull with added thickness our of one of our best bred heifers from the Mimi cow family. 40J is a prized donor cow.
- \* This bull is very well bred, has impressive EPD's & above average performance.
- \* Take a close look at this special bull. One of Brent Carey's picks.

**REFERENCE SIRE**  
**3 SONS SELL**

**Red BJR High Capacity 008**

Reg # (Cdn) 1133525

BJR High Ho 5112-23L  
 S: **BJR Hi Ho 916**  
 BJR Tilly 677-777

Garney Patriot 1214  
 D: **JRA James 904**  
 JRA James 635

CAA	B.W.	W.W.	Y.W.	Milk	TM
EPDs	+2.5	+44	+77	+16	+38

- \* High seller at the 2001 Boot Jack Ranch Sale—\$30,000 US
- \* Unique pedigree, balanced EPD's and outstanding phenotype.
- \* Phenomenal cow family and tremendous individual performance.
- \* Sired Sequoia, our herd sire High Capacity 800M and Ubar High Capacity 224.

**Lot 9** **RED HAMCO ABS HI CAP 143W**

DSH 143W 1507346 February 18, 2009 (AI)

RED BJR HI HO 916  
**RED BJR HIGH CAPACITY 008**  
 RED JRA JAMES 904

RED BRYLOR PHOENIX 16K  
**RED HAMCO INDIGO 935N**  
 RED HAMCO INDIO DIVIDE 408H

BJR HIGH HO 5112-23L  
 RED BJR TILLY 677-777  
 RED GARNEY PATRIOT 1214  
 RED JRA JAMES 635  
 RED BADLANDS BONUS 702  
 RED LAZY MC DYNAMO LADY 2X  
 RED GLACIER DIVIDE 310  
 RED RAB INDIGO 1073-982

	BW	WW	YW	Milk	TM
(CAA) EPD	+4.2	+46	+77	+21	+44
WTS	102	757	1346		
ADG	3.40-105	WDA 3.66-114	Age of dam - 6 years		
CE *	Frame 6.8	WT 1315	Scrotal 39 cm		
Carcass	%LMY	REA	%IMF	Rib Fat	Rump Fat
	62.3	14.89	5.8	.33	.42



- \* A powerful, very deep middle, well muscled bull that is a standout in the pen.
- \* His dam 935N has been designated an ELITE cow by the Canadian Angus Association & is one of our top cows out of our foundation Indigo 408H
- \* Great performance, EPD's, carcass data.
- \* Use on cows to add extra pounds to your next calf crop.

Lot 9 - Red Hamco ABS Hi Cap 143W

Take a look at this big boy!!!

**Lot 10** **RED HAMCO HI CAPACITY 172W**

DSH 172W 1507367 February 22, 2009 (AI)

RED BJR HI HO 916 BJR HIGH HO 5112-23L  
**RED BJR HIGH CAPACITY 008** RED BJR TILLY 677-777  
 RED JRA JAMES 904 RED GARNEY PATRIOT 1214  
 RED JRA JAMES 635  
 RED GLACIER NYACK 688 RED BJR RAMBLER 5162  
**RED HAMCO GRAND ELISA 210R** RED GLACIER RB-LS  
 RED HAMCO MISS GRAND 6L RED LCHMN GRAND CANYON 1244G  
 RED HAMCO ELISA ON TARGET 29J

	BW	WW	YW	Milk	TM
(CAA) EPD	+2.4	+38	+72	+18	+37
WTS	91	651	1249		
ADG	3.45-106	WDA 3.32-103	Age of dam - 4 years		
CE **	Frame 6.1	WT 1180	Scrotal 34 cm		
Carcass	%LMY	REA	%IMF	Rib Fat	Rump Fat
	55.5	12.25	3.31	.51	.33

- \* This is a deep ribbed, moderate framed bull with lots of hair and added thickness throughout.
- \* Dam is a good young Nyack cow.
- \* Good performance & EPD's on this bull that would work well on cows or heifers.
- \* One of Brent Carey's picks.



Lot 10 - Red Hamco Hi Capacity 172W

**Lot 11** **RED HAMCO ABS HI CAP 214W**

DSH 214W 1507396 March 1, 2009 (AI)

RED BJR HI HO 916 BJR HIGH HO 5112-23L  
**RED BJR HIGH CAPACITY 008** RED BJR TILLY 677-777  
 RED JRA JAMES 904 RED GARNEY PATRIOT 1214  
 RED JRA JAMES 635  
 RED MAC CAP 62F RED COAT  
**RED HAMCO SUSIE 48M** BLACK MAC MISS ATLAS 3W  
 RED BIEBER SUSIE 3923 RED BIEBER DSIGN 1325-082  
 RED BIEBER SUSIE 3198

	BW	WW	YW	Milk	TM
(CAA) EPD	+2.6	+42	+75	+14	+35
WTS	91	707	1286		
ADG	3.80-117	WDA 3.51-123	Age of dam - 7 years		
CE *	Frame 6.2	WT 1220	Scrotal 38 cm		
Carcass	%LMY	REA	%IMF	Rib Fat	Rump Fat
	64.5	15.68	3.86	.27	.26

- \* This bull is a top end bull that is built like a tank, deep middled with extra muscle.
- \* His dam is a very good cow out of one of our original donor cows - Bieber Susie.
- \* Tremendous performance on test - Ranked 1st for ADG & 2nd for combined ADG & WDA.



Lot 11 - Red Hamco ABS Hi Cap 214W



**UB UltraBeef**  
 ULTRASOUND SERVICES

**Shari Beamish**  
 Certified CUP Technician

C: 204.764.0218  
 P: 204.328.7404  
 E: shari@ultrabeef.ca

www.ultrabeef.ca  
 Box 12 Rivers, MB R0K 1X0

**REFERENCE SIRE  
3 SONS SELL**

**Red Brylor Toast 30T**

Reg # (Cdn) 1395554

Red Compass Mulberry 449M      Red Brylor New Trend 22D  
S: **Red Fine Line Mulberry 26P** D: **Red Brylor SDL Miss Lumie 214P**  
Red Dus Fayette 8G              Red Lumont Gold Star 8J

CAA	B.W.	W.W.	Y.W.	Milk	TM
EPD	-4.4	+26	+57	+26	+39

- \* High selling/syndicate bull in 2008 - \$86,000.
- \* Biebers in South Dakota purchased the walking rights.
- \* Toast proved to be a calving ease specialist. His BW EPD is -4.4 & that places him in the top 7%.
- \* Hamco & 9 other breeders purchased an exclusive semen share on Toast & these bulls will be the first Toast bull calves on offer.
- \* Calving ease bull with good performance & a foot improver.



**Lot 12**    **RED HAMCO TOASTER 23W**

DSH 23W      1507276      January 31, 2009 (AI)

RED FINE LINE MULBERRY 26P      RED COMPASS MULBERRY 449M  
**RED BRYLOR TOAST 30T**      RED DUS FAYETTE 8G  
RED BRYLOR SDL MISS LIMUE 214P      RED BRYLOR NEW TREND 22D  
RED LUMONT GOLD STAR 8J  
RED BRYLOR RSTD HIGH CAPACITY      RED BJR HIGH CAPACITY 008  
**RED HAMCO TIARA 405T**      RED BRYLOR BONITA 36J  
RED HAMCO TIARA IMPACT 360P      RED HAMCO KR DYNAMITE 93M  
RED HAMCO TIARA IMPACT 25H

	BW	WW	YW	Milk	TM
(CAA) EPD	-2.2	+32	+66	+24	+40
WTS	80	770	1271		
ADG	3.73-115	WDA 3.26-101	Age of Dam - 2 years		
CE ***	Frame 5.3	WT 1230	Scrotal 42 cm		
Carcass	%LMY	REA	%IMF	Rib Fat	Rump Fat
	60.7	14.27	4	.37	.39



Lot 12 - Red Hamco Toaster 23W

- \* A smaller framed, densely made will with added thickness.
- \* Toast 30T proved to be a very predictable, consistent calving ease bull, as should 23W.
- \* Performed very well on test & great EPD's

**Lot 13**    **RED HAMCO TOAST 46W**

DSH 46W      1507293      February 3, 2009 (AI)

RED FINE LINE MULBERRY 26P      RED COMPASS MULBERRY 449M  
**RED BRYLOR TOAST 30T**      RED DUS FAYETTE 8G  
RED BRYLOR SDL MISS LIMUE 214P      RED BRYLOR NEW TREND 22D  
RED LUMONT GOLD STAR 8J  
RED HAMCO MONOPOLY 357P      RED HAMCO MR SOL 97L  
**RED HAMCO SALLEE 269T**      RED CUMNOCK LAKOTO 995F  
RED HAMCO SALLEE 76M      RED BJR MAKE MY DAY 981  
RED BIEBER SALLEE 3300

	BW	WW	YW	Milk	TM
(CAA) EPD	-0.5	+36	+65	+21	+38
WTS	82	749	1266		
ADG	3.64-112	WDA 3.24-100	Age of Dam - 2 years		
CE ***	Frame 5.6	WT 1210	Scrotal 36.5 cm		
Carcass	%LMY	REA	%IMF	Rib Fat	Rump Fat
	60.6	13.74	2.71	.36	.44



Lot 13 - Red Hamco Toast 46W

- \* A dark red, long bodied bull with a wide, muscular hip.
- \* Excellent performance & EPD's for this heifer bull that should add some extra growth in his offspring.
- \* The Sallee cow family is certainly one of our best!!!!
- \* One of Brent Carey's picks of the pen.

**Lot 14** **RED HAMCO TOASTER 11W**

DSH 11W 1507267 January 29, 2009 (AI)

RED FINE LINE MULBERRY 26P  
**RED BRYLOR TOAST 30T**  
 RED BRYLOR SDL MISS LIMUE 214P  
 RED MLK CRK CUB 722  
**RED HAMCO TIARA 88T**  
 RED HAMCO TIARA 131P

RED COMPASS MULBERRY 449M  
 RED DUS FAYETTE 8G  
 RED BRYLOR NEW TREND 22D  
 RED LUMONT GOLD STAR 8J  
 RED GLACIER CUB 446  
 RED MLK CRK LAKOTA 152-HOBO  
 RED BRYLOR JR 25L  
 RED HAMCO TIARA 220M

	BW	WW	YW	Milk	TM
(CAA) EPD	-2.2	+25	+52	+18	+31
WTS	75	695	1198		
ADG 3.23-100	WDA 3.03-94	Age of Dam - 2 years			
CE ***	Frame 6.1	WT 1150	Scrotal 34 cm		
Carcass	%LMY	REA	%IMF	Rib Fat	Rump Fat
	61.9	14.68	4.48	.34	.32

- \* A dark red, long bodied bull that performed well on test, balanced EPD's & impressive carcass data.
- \* A well bred calving ease bull that you can use with confidence on heifers.



**REFERENCE SIRE**

**1 SON SELLS**

**Red Lchmn Gold Robber 1909E**

Reg # (Cdn) 964752

Red Leachman Robust 7222  
**S: Red Lman King Rob 8621**  
 Red Leachman Eleanor

Red Leachman Solid Gold  
**D: Red Leachman Larkaba 6384**  
 Red Lchmn Larkaba 2252

CAA	B.W.	W.W.	Y.W.	Milk	TM
EPD	-0.9	+33	+68	+32	+48

- \* Certainly King Rob's best son & his offspring are highly sought after.
- \* We have sold Goldrobber semen at auction for \$600/straw.
- \* Has sired some of our best bulls & females in the past.
- \* We currently use a Goldrobber son in our herd.



**Lot 15** **RED HAMCO GOLDRobbER 321W**

LRH 321W 1533076 March 13, 20098 (AI) (ET)

RED LMAN KING ROB 8621  
**RED LCHMN GOLD ROBBER 1909E**  
 RED LACHMAN LARKABA 6384

RED BASIN GOLD 448G  
**RED LRH ISABELLE 39J**  
 RED CIRCLE C ISABELLE 5E

RED LEACHMAN ROBUST 7222  
 RED LEACHMAN ELEANOR  
 RED LEACHMAN SOLID GOLD  
 RED LCHMN LARKABA 2252  
 RED LMB GOLDEN BOY 719  
 RED DOUBLE FORK 048S  
 RED LMAN NONE BETTER 9604  
 RED LCHMN ISABELLE C1075

	BW	WW	YW	Milk	TM
(CAA) EPD	-0.9	+34	+57	+20	+37
WTS	89	721	1250		
ADG 3.24-100	WDA 3.44-107	Age of Recipient - 5 years			
CE ***	Frame 6.4	WT 1155	Scrotal 34.5 cm		
Carcass	%LMY	REA	%IMF	Rib Fat	Rump Fat
	62.9	15.28	4.26	.32	.35

- \* A top end ET bull with great depth of rib, strong topped & heavy muscled.
- \* Dam is a donor cow out of the Isabelle cow family that we feel is one of our best.
- \* GoldRobber 1909E is recognized as King Rob's best son & with his semen no longer available his semen is valuable & his genetics are highly prized.
- \* Great carcass data - 15.28 ribeye, 4.26%IMF



Lot 15 - Red Hamco Goldrobber 321W

**REFERENCE SIRE**

**3 SONS SELL**

**Red Brylor New Trend 22D**

Reg # (Cdn) 788836

VDAR New Trend 315 Red Seaman Chief 47Y  
 S: SSS Black Trend 13B D: Red Meadow CK Miss Seaman 31A  
 Red SSS Miss Dynamo 3W Red Meadow CK Princess 10W

CAA	B.W.	W.W.	Y.W.	Milk	TM
EPD	+3.3	+36	+72	+32	50

- \* Outstanding growth & maternal EPD's
- \* Trait leader for Milk and TM
- \* Extra large scrotals, good footed, thick tops and deep sided
- \* One of the most sought after outcross bulls in the Red Angus breed
- \* Daughters are outstanding with great udders
- \* Offspring have sold very well at many sales
- \* Still the "Bull that does nothing wrong"
- \* Semen is very rare and valuable.



**Lot 16 RED HAMCO NEW TREND 233W**

DSH 233W 1533026 March 4, 2009 (AI) (ET)

SSS BLACK TREND 13B V D A R NEW TREND 315  
**RED BRYLOR NEW TREND 22D** RED SSS MISS DYNAMO 3W  
 RED MEADOW CK MISS SEAMAN 31A RED SEAMAN CHIEF 47Y  
 RED MEADOW CK PRINCESS  
 JKG CHIEFTON L303 OK DOUBLE CHIEF 4430  
**RED BIEBER SALLEE 3300** RED JKG 6F 352  
 RED BIEBER 1529-1266-1149 RED RAB NATION 217-829  
 RED RAB SALLEE 205-P830

	BW	WW	YW	Milk	TM
(CAA) EPD	+4.6	+41	+76	+17	+37
WTS	98	685	1230		
ADG	3.39-105	WDA	3.36-104	Age of Recipient - 9 years	
CE *	Frame 5.5	WT	1160	Scrotal 40 cm	
Carcass	%LMY	REA	%IMF	Rib Fat	Rump Fat
	60.5	12.12	4.03	.31	.4

- \* This very deep ribbed, wide topped bull is built like a tank!!
- \* He is the result of the last embryo we implanted out of a very successful flush. We have used 2 of his full brothers 97L & 96L (progeny in this sale) very successfully as herd sires.
- \* His dam Sallee 3300 is a donor cow that has produced very well & always passes on a lot of power.
- \* This performance bull is Larissa's pick of the pen & is a very proven commodity!!

**Lot 17 RED HAMCO NEW TREND 81W**

AGH 81W 1507203 February 10, 2009 (AI)

SSS BLACK TREND 13B V D A R NEW TREND 315  
**RED BRYLOR NEW TREND 22D** RED SSS MISS DYNAMO 3W  
 RED MEADOW CK MISS SEAMAN 31A RED SEAMAN CHIEF 47Y  
 RED MEADOW CK PRINCESS  
 RED BRYLOR RSTD HIGH CAPACITY RED BJR HIGH CAPACITY 008  
**RED HAMCO ISABELLE 5R** RED BRYLOR BONITA 36J  
 RED AGH ISABELLE 338N RED HAMCO MIMI MARKER 78K  
 RED AGH ISSIE TARGET 185L

	BW	WW	YW	Milk	TM
(CAA) EPD	+1.1	+33	+65	+24	+41
WTS	90	617	1175		
ADG	3.31-102	WDA	3.11-96	Age of Dam - 4 years	
CE **	Frame 6.2	WT	1140	Scrotal 38 cm	
Carcass	%LMY	REA	%IMF	Rib Fat	Rump Fat
	62.8	12.65	3.14	.24	.14

- \* A long, smooth made, moderate framed bull with an excellent maternal pedigree.
- \* Excellent EPD's & solid performance on test.
- \* This bull should sire very desirable & valuable replacement heifers.



**Lot 16  
 Red Hamco  
 New Trend 233W**

## Lot 18 RED HAMCO NEW TREND 71W

DSH 71W 1507310 February 7, 2009 (AI)

SSS BLACK TREND 13B V D A R NEW TREND 315  
**RED BRYLOR NEW TREND 22D** RED SSS MISS DYNAMO 3W  
 RED MEADOW CK MISS SEAMAN 31A RED SEAMAN CHIEF 47Y  
 RED HAMCO SOL ON TARGET 11J RED MEADOW CK PRINCESS  
**RED HAMCO LARK 137M** RED LCHMN ON TARGET 1016E  
 RED MCKNIGHT 103J RED BIEBER SAL 4049  
 RED ARM RIVER REBEL'S ECLIPSE  
 RED CUTARM MISS 490C

	BW	WW	YW	Milk	TM
(CAA) EPD	-1.6	+23	+50	+19	+31
WTS	68	604	1116		
ADG	3.31-102	WDA 3.01-94	Age of Dam - 7 years		
CE **	Frame 5.4	WT 1115	Scrotal 36 cm		
Carcass	%LMY	REA	%IMF	Rib Fat	Rump Fat
	62.8	12.61	3.5	.24	.17

- \* A smooth made, long bull with extra thickness & an ideal Angus head.
- \* New Trend 22D is one of the truly great Red Angus Bulls & with his semen rare & expensive, a direct son is rare.
- \* 137M is a good producing cow that has produced 2 bulls that have sold in our sale.



Lot 18 - Red Hamco New Trend 71W

## REFERENCE SIRE

### Red Glacier Logan

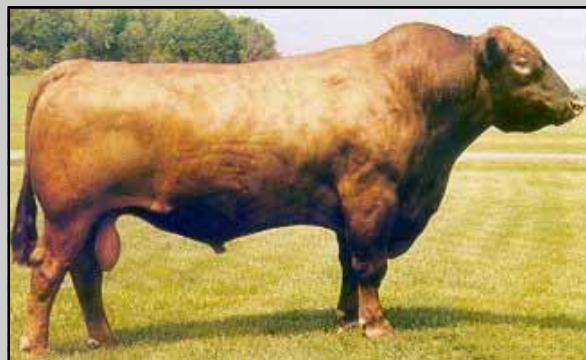
Reg # (Cdn) 777315

OK Double Chief 4430 Red Creek Side Copper  
 S: Red Buffalo Creek VC Chief 105 D: Red Glacier Rebalas  
 MD Madcap RC 237 Glacier Hi-RB-LS

CAA	B.W.	W.W.	Y.W.	Milk	TM
EPD	-1.1	+24	+41	+21	+34

- \* Maternal and Marbling Excellence
- \* Breed leader for marbling, super longevity and udders
- \* Tremendous sire for making outstanding daughters
- \* Sires some of the best footed offspring in the breed

## 3 SONS SELL



## Lot 19 RED HAMCO LOGAN 141W

LRH 141W 1507238 February 18, 2009 (AI)

RED BUFFALO CREEK VC CHIEF 105 OK DOUBLE CHIEF 4430  
**RED GLACIER LOGAN** MD MADCAP RC 237  
 RED GLACIER REBALAS RED CREEKSIDE COPPER  
 RED HOLDEN HI HO 753 GLACIER HI-RB-LS  
**RED LEADHAM HI HO 50L** RED HOLDEN HI HO 574  
 RED LEADHAM CARMELLA 45G RED BIEBER MIMI 4151  
 RED LCHMN DON JUAN 1502E  
 RED CIRCLE C CARMELLA 24E

	BW	WW	YW	Milk	TM
(CAA) EPD	-1.1	+27	+43	+21	+34
WTS	87	663	1235		
ADG	3.45-106	WDA 3.34-104	Age of Dam - 8 years		
CE ***	Frame 5.8	WT 1200	Scrotal 37.5 cm		
Carcass	%LMY	REA	%IMF	Rib Fat	Rump Fat
	57.5	13.48	3.58	.47	.26

- \* Another densely made, thick topped, wide quartered, easy fleshing bull with very good performance on test for a heifer bull.
- \* Again very good performance for a bull that you can use on heifers.



Lot 19 - Red Hamco Logan 141W

**Lot 20** **RED HAMCO LOGAN 95W**

DSH 95W 1507321 February 13, 2009 (AI)

RED BUFFALO CREEK VC CHIEF 105 OK DOUBLE CHIEF 4430  
**RED GLACIER LOGAN** MD MADCAP RC 237  
 RED GLACIER REBALAS RED CREEKSIDE COPPER  
 GLACIER HI-RB-LS  
 RED BADLANDS ALL BEEF 114J RED BADLANDS MR BEEF 805  
**RED HAMCO SUSIE 21S** RED RBRTS BELGA 5126  
 RED HAMCO SUSIE 110P RED HAMCO KR DYNAMITE 93M  
 RED HAMCO SUSIE 48M

	BW	WW	YW	Milk	TM
(CAA) EPD	-0.7	+29	+53	+20	+34
WTS	80	663	1173		
ADG	3.18-98	WDA 3.08-96	Age of Dam - 3 years		
CE ***	Frame	5.5	WT 1120	Scrotal 33 cm	
Carcass	%LMY	REA	%IMF	Rib Fat	Rump Fat
	62.4	15.4	6.01	.34	.32

- \* A very thick, densely made bull with added muscle.
- \* This pedigree is loaded with added muscle, carcass traits & calving ease.
- \* Very large ribeye & high % IMF.
- \* Could be used on heifers.

**Lot 21** **RED HAMCO ICEBERG 127W**

DSH 127W 1507338 February 16, 2009 (AI)

RED BUFFALO CREEK VC CHIEF 105 OK DOUBLE CHIEF 4430  
**RED GLACIER LOGAN** MD MADCAP RC 237  
 RED GLACIER REBALAS RED CREEKSIDE COPPER  
 GLACIER HI-RB-LS  
 RED BRYLOR RSTD HIGH CAPACITY RED BADLANDS MR BEEF 805  
**RED HAMCO MS DESIGN 209R** RED RBRTS BELGA 5126  
 RED HAMCO MS DESIGN HIMARK 30K RED HAMCO KR DYNAMITE 93M  
 RED HAMCO SUSIE 48M

	BW	WW	YW	Milk	TM
(CAA) EPD	-1.2	+26	+46	+18	+31
WTS	85	621	1138		
ADG	3.28-101	WDA 3.03-94	Age of Dam - 4 years		
CE ***	Frame	5.3	WT 1095	Scrotal 35 cm	
Carcass	%LMY	REA	%IMF	Rib Fat	Rump Fat
	63	12.24	3.99	.22	.27

- \* A smaller framed, heavily muscled bull with the ideal Angus head.
- \* Calving ease throughout this pedigree & strong maternal genetics.
- \* Logan is a very proven bull that does so many things well that we keep using him to sire bulls that are commercial bull buyers like.

**REFERENCE SIRE**  
**1 SON SELLS**

**Red Brylor RSTD High Capacity 800M**

Reg # (Cdn) 1194714

Red BJR Hi Ho 916 Leachman EBV 3531  
 S: **Red BJR High Capacity 008** D: **Red Brylor BJR Cherok 36J**  
 Red JRA James 904 Red Brylor Cherok 40X

CAA	B.W.	W.W.	Y.W.	Milk	TM
EPDs	-5.5	+23	+51	+17	+29

- \* Hamco purchased possession on this \$21,000 syndicated bull from the respected Brylor & Ringstead programs.
- \* Has an exceptional birth to yearling weight spread.
- \* A very consistent calving ease bull with a lot of growth to his calves.
- \* Sires the deep ribbed traditional Angus type.
- \* We sold a bred heifer to Graham Red Angus for \$3900 & a heifer calf for \$2450 to T-K Red Angus in the 2006 Manitoba Magic.
- \* Semen available from Brylor Semen Sales



**Lot 22** **RED HAMCO HI CAPACITY 18W**

DSH 18W 1507271 January 30, 2009 (AI)

RED BJR HIGH CAPACITY 008 RED BJR HI HO 916  
**RED BRYLOR RSTD HIGH CAPACITY** RED JRA JAMES 904  
 RED BRYLOR BONITA 36J RED LEACHMAN EBV 3531  
 RED HAMCO MONOPOLY 357P RED BRYLOR CHEROK 40X  
**RED HAMCO SIERRA 355T** RED HAMCO MR SOL 97L  
 RED HAMCO SIERRA CYBERSMART 22 RED CUMNOCK LAKOTA 995F  
 RED BIEBER CYBERSMART 6036  
 RED BIEBER SIERRA 6739

	BW	WW	YW	Milk	TM
(CAA) EPD	-0.1	+38	+73	+21	+40
WTS	79	750	1281		
ADG	3.28-101	WDA 3.27-101	Age of Dam - 2 years		
CE ***	Frame	6.1	WT 1235	Scrotal 38 cm	
Carcass	%LMY	REA	%IMF	Rib Fat	Rump Fat
	62.4	13.47	4.48	.28	.28

- \* A moderate framed High Capacity 800M bull with added length & depth.
- \* Impressive performance numbers & EPD's on this heifer bull.
- \* These High Capacity sons make excellent heifer bulls & the females he sires will be keepers.



Bulls enjoying the winter sun

**REFERENCE SIRE  
4 SONS SELL**

**Red Brylor Master Plan 17M**

Reg # (Cdn) 1113082

Gardens Sensation 039 S1      Red RD Dividend 7F  
S: **Red Basin Sensation 702E**    D: **Red Brylor Bonita 66K**  
Stevenson Elemrere 538C      Red Brylor CheroK 40X

CAA	B.W.	W.W.	Y.W.	Milk	TM
EPD	-0.3	+27	+62	+5	+19

- \* Masterplan is the replacement for his legendary sire Sensation
- \* The Canadian Record Selling Bull at \$92,000 to Red Rock, Beiseker & the "Master Planners"
- \* Hamco belongs to the Master Planner syndicate and had an exclusive semen package
- \* Proven calving ease sire with lots of punch afterwards.
- \* Calves exhibit a deep cherry red color & have great hair coats
- \* Dam 66K holds Brylors record for high selling female at \$31,000 in Tradition With A Vision 06 Sale
- \* Byran MacKenzie states Masterplan may be the best bull he has ever bred
- \* Master Plan semen is now off the Market.



**Lot 23 RED HAMCO MASTERMIND 145W**

DSH 145W    1507348    February 18, 2009 (AI)

RED BASIN SENSATION 702E      GARDENS SENSATION 039 S1  
**RED BRYLOR MASTER PLAN 17M**    STEVENSON ELEMREERE 538C  
RED BRYLOR BONITA 66K          RED RD DIVIDEND 7F  
   RED BRYLOR CHEROK 40X  
RED LCHMN ON TARGET 1016E    RED LCHMN ROBIN HOOD 1174B  
**RED HAMCO SAL ON TARGET 57J**    RED LCHMN BLOXY C1176  
RED BIEBER SAL 4049              RED BIEBER DSIGN 1325-082  
   RED BIEBER SAL 3574

	BW	WW	YW	Milk	TM
(CAA) EPD	+1.3	+30	+54	+9	+24
WTS	86	593	1225		
ADG 4.03-124	WDA 3.27-102	Age of Dam - 10 years			
CE **	Frame 6.1	WT 1175	Scrotal 35 cm		
Carcass	%LMY	REA	%IMF	Rib Fat	Rump Fat
	63.3	11.38	4.06	.18	.22

- \* A very long, dark red, well muscled bull out of a very proven & valuable Sal On Target 57J cow & consistent & very popular Master Plan bull.
- \* Ranked 4th overall for ADG, 7th overall combined.
- \* He will definitely sire calves with added growth.
- \* This bull would work well on cows or heifers.



**Lot 23  
Red Hamco  
Mastermind 145W**

**Lot 24 RED HAMCO MASTERPLAN 20W**

DSH 20W    1507273    January 31, 2009 (AI)

RED BASIN SENSATION 702E      GARDENS SENSATION 039 S1  
**RED BRYLOR MASTER PLAN 17M**    STEVENSON ELEMREERE 538C  
RED BRYLOR BONITA 66K          RED RD DIVIDEND 7F  
   RED BRYLOR CHEROK 40X  
PRAIRIELANE IDEAL 1008-3025    PRAIRIELANE IDEAL 8116-1008  
**RED HAMCO ERICA 452T**          PRAIRIELANE 6122 BANDOLER 8042  
RED TOP LINE ERICA 212          RED BADLANDS BONUS 702  
   RED TOP LINE BOOTJACK 17E

	BW	WW	YW	Milk	TM
(CAA) EPD	+1.6	+34	+68	+11	+28
WTS	85	781	1380		
ADG 3.92-121	WDA 3.51-109	Age of Dam - 2 years			
CE **	Frame 6.6	WT 1325	Scrotal 39 cm		
Carcass	%LMY	REA	%IMF	Rib Fat	Rump Fat
	60.7	14.27	4	.37	.39

- \* A dark red, powerful, wide rumped son of the breed great Master Plan bull.
- \* Dam is a very promising young outcross Ideal 3025 daughter.
- \* Performed very well on test—5th overall (ADG & WDA combined).
- \* This bull would work well on cows or heifers.
- \* One of Brent Carey's picks.

**Lot 25** **RED HAMCO MASTER 137W**

AGH 137W 1516182 February 18, 2009 (AI)

RED BASIN SENSATION 702E  
**RED BRYLOR MASTER PLAN 17M**  
 RED BRYLOR BONITA 66K

GARDENS SENSATION 039 S1  
 STEVENSON ELEMRERE 538C  
 RED RD DIVIDEND 7F  
 RED BRYLOR CHEROK 40X  
 RED BUF CRK HOBO 1413  
 BUF CR CARRIE VC1174  
 RED BAR M SIENA'S ROBIN 12F  
 RED KENRAY MISS BASIC 830H

RED BUF CRK HOBO 1961  
**RED HAMCO BASIC INSTINCT 63R**  
 RED AGH BASIC INSTINCT 346N

	BW	WW	YW	Milk	TM
(CAA) EPD	-1.4	+24	+50	+9	+21
WTS	83	596	1215		
ADG 4.00-124	WDA 3.20-99	Age of Dam - 4 years			
CE ***	Frame 6.3	WT 1150	Scrotal 35.5	cm	
Carcass	%LMY	REA	%IMF	Rib Fat	Rump Fat
	63.8	11.68	2.68	.17	.21

- \* A Master Plan son that is thick throughout, with a good muscular hindquarter.
- \* This heifer bull has a lot of great heifer bulls in his pedigree.
- \* Use with confidence on heifers!
- \* Great performance on test - 5th highest ADG



Lot 26 - Red Hamco Masterplan 213W

**Lot 26** **RED HAMCO MASTERPLAN 213W**

DSH 213W 1516192 March 1, 2009 (AI)

RED BASIN SENSATION 702E  
**RED BRYLOR MASTER PLAN 17M**  
 RED BRYLOR BONITA 66K

GARDENS SENSATION 039 S1  
 STEVENSON ELEMRERE 538C  
 RED RD DIVIDEND 7F  
 RED BRYLOR CHEROK 40X  
 RED GLACIER DIVIDE 310  
 RED TOWAW MOLLY 67C  
 RED LMAN KING ROB 8621  
 RED GIRVINMERE ROSE 473D

RED TOWAW INDEED 104H  
**RED HAMCO ROSE 142R**  
 RED HAMCO ROSE 112M

	BW	WW	YW	Milk	TM
(CAA) EPD	+2.7	+33	+60	+12	+28
WTS	101	632	1192		
ADG 3.29-101	WDA 3.19-99	Age of Dam - 4 years			
CE *	Frame 6.2	WT 1110	Scrotal 36	cm	
Carcass	%LMY	REA	%IMF	Rib Fat	Rump Fat
	63.7	12.15	4.28	.19	.29

- \* A dark red, deep ribbed, well muscled, correct made bull with a nice Angus head.
- \* Dam is very well bred, good uddered young cow from our foundation Rose cow family.
- \* With Masterplan, Sensation, Indeed & King Rob in the pedigree you can't go wrong.

**REFERENCE SIRE**  
**1 SON SELLS**



**Red Blaze V415**

Reg # (Cdn) 878073

S: Red VGW Fire King 128  
 VGW 4430 Chief 502

D: Red BJB Lakota 0117  
 Red BJB Lakota-0 855

CAA	B.W.	W.W.	Y.W.	Milk	TM
EPD	+2.2	+34	+74	+19	36

- \* A bull known for producing thick, easy fleshing, deep ribbed offspring.
- \* Semen has always been limited due to his untimely death at stud.
- \* His popularity increased as a result of his very productive progeny.
- \* Semen is rare & very expensive.

**Lot 27** **RED HAMCO BLAZE 200W**

DSH 200W 1533025 February 27, 2009 (AI) (ET)

RED VGW FIRE KING 128  
**RED BLAZE V415**  
 RED BJB LAKOTA 0117  
 RED LMAN ROBIN HOOD 1174B  
**RED HILL SPRING ROSE**  
 RED TASSEL ROSE 82C

RED ROCK CREEK KING  
 VGW 4430 CHIEF 502  
 RED BJR EXCEL 149  
 RED BJB LAKOTA-0 855  
 RED LMAN KING ROB 8621  
 RED LEACHMAN PRILARK  
 RED LMAN KONG 8760  
 RED LINCOLN CREEK ROSE 8Y

	BW	WW	YW	Milk	TM
(CAA) EPD	+2.0	+36	+65	+16	+34
WTS	102	623	1228		
ADG 3.43-106	WDA 3.31-103	Age of Recipient - 3 years			
CE *	Frame 6.4	WT 1160	Scrotal 34	cm	
Carcass	%LMY	REA	%IMF	Rib Fat	Rump Fat
	65.1	13.83	4.12	.19	.21

- \* A heavily muscled, wide topped ET bull with above average performance on test.
- \* Dam is our prized donor cow from the Prescott dispersal & sired by the legendary Robin Hood bull.
- \* Blaze V415 progeny are very rare & heavily sought after as his semen is very expensive if you can find any.
- \* Very good performance on test, & good carcass data.

**REFERENCE SIRE  
2 SONS SELL**

**Red TG Showtime 35L**

Reg # (Cdn) 1075220

Red Lakotas Heavenly 305  
S: **Red Lchmn Hevn's Sake 1002F** D: **Red TG Rob Echeta 36H**  
Red Leachman Prilark Red T G Monu Echeta 19F

CAA	B.W.	W.W.	Y.W.	Milk	TM
EPD	-1.7	+31	+73	+8	23

- \* A calving ease bull with very high growth EPD's
- \* Purchased a package of semen at Red Round Up
- \* Impressive Birth to Yearling weight spread.

**Lot 28 RED HAMCO SHOWTIME 119W**

DSH 119W 1533353 February 15, 2009 (AI)

RED LCHMN HEVN'S SAKE 1002F RED LAKOTAS HEAVENLY 305  
**RED TG SHOWTIME 53L** RED LEACHMAN PRILARK  
 RED TG ROB ECHETA 36H RED LMN IMPRESSIVE ROB 1095B  
 RED BRYLOR MASTERPLAN 17M RED BASIN SENSATION 702E  
**RED HAMCO EUCLA 33R** RED BRYLOR BONITA 66K  
 RED HAMCO EUCLA 3452 RED SSS HIGH MARK 272D  
 RED BIEBER EUCLA 3452

	BW	WW	YW	Milk	TM
(CAA) EPD	-1.1	+27	+61	+7	+21
WTS	95	649	1147		
ADG	3.11-96	WDA 3.03-94	Age of Dam - 4 years		
CE **	Frame 5.3	WT 1098	Scrotal 38 cm		
Carcass	%LMY	REA	%IMF	Rib Fat	Rump Fat
	61.6	12.83	3.62	.29	.19

- \* A very deep Showtime son that is very stylish & correct.
- \* Dam is a good uddered, fancy young Master Plan cow.
- \* Could be used on cows or heifers.

**Lot 29 RED HAMCO SHOWTIME 60W**

DSH 60W 1507303 February 6, 2009 (AI)

RED LCHMN HEVN'S SAKE RED LAKOTAS HEAVENLY 305  
**RED TG SHOWTIME 53L** RED LEACHMAN PRILARK  
 RED TG ROB ECHETA 36H RED LMN IMPRESSIVE ROB  
 RED T G MONU ECHETA 19F  
 RED BUF CRK HOBO 1961 RED BUF CRK HOBO 1413  
**RED HAMCO CHIC 23T** BUF CR CARRIE VC1174  
 RED HAMCO CHIC 443R RED BRYLOR RSTD HIGH CAPACITY  
 RED HAMCO CHIC CUB 104M

	BW	WW	YW	Milk	TM
(CAA) EPD	+1.3	+38	+74	+14	+34
WTS	95	817	1372		
ADG	3.62-112	WDA 3.53-110	Age of Dam - 2 years		
CE **	Frame 6.4	WT 1310	Scrotal 39 cm		
Carcass	%LMY	REA	%IMF	Rib Fat	Rump Fat
	61.1	13.08	3.92	.32	.26

- \* Showtime 60W is definitely a top end bull, that is deep middled & thick throughout.
- \* He performed very well on test—9th overall.
- \* Impressive EPD's & a lot of very good sires in his pedigree.



Lot 29 - Red Hamco Showtime 60W



## REFERENCE SIRE 3 SONS SELL

### MLK CRK Cub 722

Reg # (Cdn) 1039064

Glacier Griz 146                      Buf Crk Hobo 1961  
S: **Glacier Cub 446**                      D: **Mlk Crk Lakota 152-Hobo**  
Glacier Fritz 241                      Mlk Crk Lakota 802-Ramb

CAA	B.W.	W.W.	Y.W.	Milk	TM
EPD	-1.2	+32	+63	+20	+36

- \* Cub combines outstanding eye appeal and phenotype
- \* Cub is a "feet and leg improver" with a little more frame
- \* Cub's dam is one of the top cows in the Red Angus industry
- \* Cub sired several top end bulls that sold very well in our last six bull sales & he has done it again this year!
- \* Cub's daughters are working very well in our herd.
- \* Semen is no longer available



### Lot 30 RED HAMCO CUB 42W

DSH 42W    1507290    February 2, 2009 (AI)

RED GLACIER CUB 446                      GLACIER GRIZ 146  
**RED MLK CRK CUB 722**                      GLACIER FRITZ 241  
RED MLK CRK LAKOTA 152-HOBO      RED BUF CRK HOBO 1961  
    RED MLK CRK LAKOTA RAMB  
RED BJR HIGH CAPACITY 008          RED BJR HI HO 916  
**RED HAMCO DESIGN 195T**              RED JRA JAMES 904  
RED HAMCO DESIGN 124N              RED HAMCO MIMI MARKER  
    RED HAMCO MISS GRAND 21L

	BW	WW	YW	Milk	TM
(CAA) EPD	+2.1	+40	+71	+17	+37
WTS	91	742	1226		
ADG	3.44-106	WDA 3.13-97	Age of Dam - 2 years		
CE *	Frame 5.6	WT 1175	Scrotal 37 cm		
Carcass	%LMY	REA	%IMF	Rib Fat	Rump Fat
	63.4	13.13	3.74	.23	.21



Lot 30 - Red Hamco Cub 42W

- \* This well bred, moderate framed, deep sided bull has added muscle & length.
- \* Performed above average on test & has very impressive EPD's.
- \* This bull catches your eye in a large pen of bulls & was one of Brent Carey's picks.

### Lot 31 RED HAMCO YOGI 36W

DSH 36W    1507284    February 2, 2009 (AI)

RED GLACIER CUB 446                      GLACIER GRIZ 146  
**RED MLK CRK CUB 722**                      GLACIER FRITZ 241  
RED MLK CRK LAKOTA 152-HOBO      RED BUF CRK HOBO 1961  
    RED MLK CRK LAKOTA 802-RAMB  
RED BJR MAKE MY DAY 981              RED BJR EASY RIDER 781  
**RED HAMCO TIARA 210T**              RED BJR TOW KANA 117-710  
RED HAMCO CRATER 61N              RED MANITOBA EXPLOSION 60J  
    RED HAMCO TIARA BIG IRON 69K

	BW	WW	YW	Milk	TM
(CAA) EPD	-2.0	+32	+62	+23	+39
WTS	74	697	1210		
ADG	3.16-98	WDA 3.07-95	Age of Dam - 2 years		
CE ***	Frame 5.9	WT 1150	Scrotal 34 cm		
Carcass	%LMY	REA	%IMF	Rib Fat	Rump Fat
	62.6	12.13	4.39	.23	.25

- \* A very well muscled, long made bull with a nice Angus head.
- \* This pedigree reads calving ease throughout with many breed legends in this pedigree.
- \* Use with confidence on heifers & yet have the performance of a cow bull.

### Lot 32 RED HAMCO CUB 40W

DSH 40W    1507288    February 2, 2009 (AI)

RED GLACIER CUB 446                      GLACIER GRIZ 146  
**RED MLK CRK CUB 722**                      GLACIER FRITZ 241  
RED MLK CRK LAKOTA 152-HOBO      RED BUF CRK HOBO 1961  
    RED MLK CRK LAKOTA 802-RAMB  
RED BJR HIGH CAPACITY 008          RED BJR HI HO 916  
**RED HAMCO SALLY 89T**              RED JRA JAMES 904  
RED HAMCO SALLY 55N              RED LODI PRINCE 2632  
    RED HAMCO MISS 56F CLASSIC 180K

	BW	WW	YW	Milk	TM
(CAA) EPD	+3.3	+39	+73	+15	+34
WTS	95	691	1228		
ADG	3.63-112	WDA 3.09-96	Age of Dam - 2 years		
CE *	Frame 6.8	WT 1160	Scrotal 36 cm		
Carcass	%LMY	REA	%IMF	Rib Fat	Rump Fat
	67.7	14.53	3.58	.11	.17

- \* Another typical Cub son - well muscled, long bodied, with excellent feet & legs, & added performance.
- \* Very high LMY & ribeye measurement on this bull, that performed well on test.



**REFERENCE SIRE**

**1 SON SELLS**

**Red Crescent Creek H0904 52K**

Reg # (Cdn) 1001729

PBC 373 DS0202 Red Mem Iceberg 4W  
 S: Red PBC D0202 6M H0904 D: Red Mem Icecap Annie 22Z  
 PBC 6F C0837 Red Mem Chinna 26S

CAA	<u>B.W.</u>	<u>W.W.</u>	<u>Y.W.</u>	<u>Milk</u>	<u>TM</u>
EPD	+0.8	+29	+43	+10	24

- \* Was the 2001 Crescent Creek high seller to Riverdale Stock Farms for \$ 13500.
- \* We purchased a semen a package on this bull.
- \* Has an outstanding pedigree.
- \* MEM Icecap Annie 22Z is one of the best Red Angus Cows of all times.
- \* His calves are born easy & develop into great animals.



**Lot 36 RED HAMCO CHIEF 84W**

DSH 84W 1507317 February 11, 2009 (AI)

RED PBC D0202 6M H0904 PBC 373 D0202  
**RED CRESCENT CREEK H0904 52K** PBC 6F C0837  
 RED MEM ICECAP ANNIE 22Z RED MEM ICEBERG 4W  
 RED MEM CHINNA 26S  
 RED SSS HIGH MARK 272D RED SSS HIGH LINE 402M  
**RED HAMCO MS DESIGN HIMARK 30K** RED SSS MISS REDCAP 87T  
 RED BIEBER DESIGN 4306 RED BIEBER DESIGN DSIGN 132S  
 RED BIEBER CHICH 3518

	<b>BW</b>	<b>WW</b>	<b>YW</b>	<b>Milk</b>	<b>TM</b>
(CAA) EPD	+0.3	+28	+42	+8	+22
WTS	85	619	1120		
ADG 3.18-98	WDA 3.03-94	Age of Dam - 9 years			
CE **	Frame 5.5	WT 1110	Scrotal 37 cm		
Carcass	%LMY	REA	%IMF	Rib Fat	Rump Fat
	59.1	12.27	3.9	.37	.28

- \* Chief 84W is a very deep sided bull with the great Angus depth of Rib like his grand dam Icecap Annie 22Z.
- \* Dam is a very good older, proven cow.
- \* Use on cows or heifers.



Lot 36 - Red Hamco Chief 84W

**REFERENCE SIRE**

**1 SON SELLS**

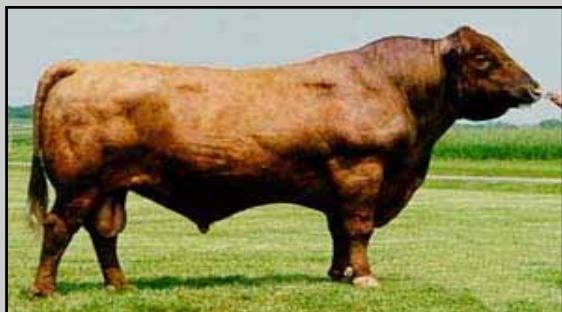
**Red Buf Crk Hobo 1961**

Reg # (Cdn) 706951

Red BJR Hobo 800 BUF CRK Tomahawk 529  
 S: Red Buf CRK Hobo 1413 D: BUF CR Carrie VC 1174  
 BJR Lana 3140-302 BFLO CRK Carrie VC473

CAA	<u>B.W.</u>	<u>W.W.</u>	<u>Y.W.</u>	<u>Milk</u>	<u>TM</u>
EPDs	-3.5	+18	+37	+16	+25

- \* The world's most popular calving ease Red Angus Bull
- \* Daughters are large volumed with proven maternal ability.
- \* Builds foundation females based on calving ease, longevity and fertility.
- \* A perfect choice for crossbreeding on continental based females.



**Lot 37 RED HAMCO LITTLE HOBO 173W**

DSH 173W 1507368 February 22, 2009 (AI)

RED BUF CRK HOBO 1413 RED BJR HOBO 800  
**RED BUF CRK HOBO 1961** BJR LANA 3140-302  
 BUF CR CARRIE VC1174 BUF CRK TOMAHAWK 529  
 BFLO CRK CARIE VC473  
 RED BRYLOR PHOENIX 16K RED BADLANDS BONUS 702  
**RED HAMCO INDIGO 132S** RED LAZY MC DYNAMO LADY 2X  
 RED HAMCO INDIGO DIVIDE 408H RED GLACIER DIVIDE 310  
 RED RAB INDIGO 1073-982

	<b>BW</b>	<b>WW</b>	<b>YW</b>	<b>Milk</b>	<b>TM</b>
(CAA) EPD	+0.1	+26	+44	+19	+32
WTS	87	65	1200		
ADG 3.58-111	WDA 3.14-98	Age of Dam - 3 years			
CE **	Frame 6.6	WT 1115	Scrotal 37 cm		
Carcass	%LMY	REA	%IMF	Rib Fat	Rump Fat
	64.7	13.74	3.67	.20	.28

- \* A long, dark red bull sired by the breed legend Hobo 1961.
- \* Dam is a good young cow out of our treasured Indigo cow family.
- \* Very strong maternal pedigree. Daughters would definitely be replacement quality.
- \* This bull would work well on heifers or cows.



**REFERENCE SIRE  
2 SONS SELL**

**Prairielane Ideal 1008-3025 RC**

Reg # (Cdn) 1161362

Prairielane Ideal 1418-8116      Prairielane Max 3058 6122  
S: **Prairielane Ideal 8116-1008**      D: **Prairielane 6122 Bandoler 8042**  
Prairielane 6060 Duchess 9150      Prairielane 2083 Bandoler 5004

CAA B.W. W.W. Y.W. Milk TM  
EPD +3.5 +53 +93 +16 +43

- \* We purchased Ideal 3025 as a 3 year old outcross sire from the Prairielane herd.
- \* This red carrier bull has introduced some Black Angus outcross genetics to our herd.
- \* Outstanding EPD's and pedigree!!



**Lot 40 RED HAMCO NEW DEAL 286W**

DSH 286W      1507441      March 9, 2009

PRAIRIELANE IDEAL 8116-1008      PRAIRIELANE IDEAL 1418-8116  
**PRAIRIELANE IDEAL 1008-3025**      PRAIRIELANE 6060 DUCHESS  
PRAIRIELANE 6122 BANDOLER 8042      PRAIRIELANE MAX 3058 6122  
PRAIRIELANE 2083 BANDOLER  
RED HAMCO ON TARGET 26J      RED LCHMN ON TARGET 1016E  
**RED HAMCO 3371 TARGET 339L**      RED BIEBER ELISA 3413  
RED BIEBER DIANN 3371      RED RAB ABE LINCOLN

	BW	WW	YW	Milk	TM
(CAA) EPD	+3.0	+39	+73	+16	+35
WTS	95	691	1258		
ADG	3.77-116	WDA 3.44-107	Age of Dam - 8 years		
CE *	Frame 6.8	WT 1170	Scrotal 38.5 cm		
Carcass	%LMY	REA	%IMF	Rib Fat	Rump Fat
	63	13.21	3.49	.25	.34

- \* A long bodied, dark red bull that performed very well on test.
- \* Excellent EPD's on this bull out our of our strong Diann family.
- \* This bull will add extra pounds to your calves
- \* Use on cows



Lot 40 - Red Hamco New Deal 286W

**Lot 41 RED HAMCO IDEAL 278W**

AGH 278W      1507214      March 9, 2009

PRAIRIELANE IDEAL 8116-1008      PRAIRIELANE IDEAL 1418-8116  
**PRAIRIELANE IDEAL 1008-3025**      PRAIRIELANE 6060 DUCHESS  
PRAIRIELANE 6122 BANDOLER 8042      PRAIRIELANE MAX 3058 6122  
PRAIRIELANE 2083 BANDOLER  
RED SSS HIGH MARK 272D      RED SSS HIGH LINE 402M  
**RED AGH MISS HIGH MARK 37J**      RED SSS MISS REDCAP 87T  
RED PLAY PEN ALEXANDRA 19G      RED NORTHLINE EPIC 2E  
RED MAC ALEXANDRA 1A

	BW	WW	YW	Milk	TM
(CAA) EPD	-1.4	+32	+57	+17	+33
WTS	80	643	1166		
ADG	3.21-99	WDA 3.19-99	Age of Dam - 10 years		
CE ***	Frame 5.8	WT 1085	Scrotal 40 cm		
Carcass	%LMY	REA	%IMF	Rib Fat	Rump Fat
	59.5	13.38	4.14	.39	.36

- \* A thick made, wide topped bull out of our outcross Black/Red carrier bull - Ideal 3025.
- \* Dam 37J is a very proven cow that is still performing very well.
- \* This bull should work well on heifers



Lot 41 - Red Hamco Ideal 278W

**REFERENCE SIRE**  
**10 SONS SELL**

**Red SSS Equal 508N**

Reg # (Cdn) 1507408

Red South View No Equal 28H      Red SSS Boomer 803B  
S: **Red SVR Commander 47L**      D: **Red Larkaba 730F**  
Red South View Miss Maxi 45H      Red Miss Tokun Larkaba 96T

CAA	B.W.	W.W.	Y.W.	Milk	TM
EPD	+2.2	+37	+59	+24	+42

- \* We purchased this bull as a mature proven herdsire from the historic Fineline Dispersal.
- \* His daughters sold very well in this sale & we look forward to retaining his daughters in our herd.
- \* His Larkaba 730F is a top end cow in the SSS herd & is a prolific donor cow.



**Lot 42**      **RED HAMCO EQUAL 405W**

DSH 405W      1507523      March 20, 2009

RED SVR COMMANDER 47L      RED SOUTH VIEW NO EQUAL 28H  
**RED SSS EQUAL 508N**      RED SOUTH VIEW MISS MAXI 45H  
RED SSS LARKABA 730F      RED SSS BOOMER 803B  
RED MISS TOKUN LARKABA 96T  
RED HAMCO SOL ON TARGET 11J      RED LCHMN ON TARGET 1016E  
**RED HAMCO MABEL 187M**      RED BIEBER SAL 4049  
RED HAMCO 51F LARSON RED SKY      RED LARSON RED SKY 539  
RED TFE 51F

	BW	WW	YW	Milk	TM
(CAA) EPD	+0.5	+36	+65	+21	+40
WTS	82	719	1229		
ADG	3.49-108	WDA 3.39-105	Age of Dam - 7 years		
CE ***	Frame 6.5	WT 1115	Scrotal 34 cm		
Carcass	%LMY	REA	%IMF	Rib Fat	Rump Fat
	62.1	14.39	3.82	.32	.31

- \* A younger, dark red bull with excellent style & muscle pattern.
- \* His dam Mabel 187M (Elite CAA dam) has produced extremely well for us, including DSH 151R that sold to Andre Maguet for \$4250 in our 2006 sale.
- \* A heifer bull that will add performance to his calves.

**Lot 43**      **RED HAMCO EQUAL 232W**

DSH 232W      1507408      March 4, 2009

RED SVR COMMANDER 47L      RED SOUTH VIEW NO EQUAL 28H  
**RED SSS EQUAL 508N**      RED SOUTH VIEW MISS MAXI 45H  
RED SSS LARKABA 730F      RED SSS BOOMER 803B  
RED MISS TOKUN LARKABA 96T  
RED GLACIER NYACK 688      RED BJR RAMBLER 5162  
**RED HAMCO CARMELLA 130R**      RED GLACIER RB-LS  
RED HAMCO CARMELLA 75M      RED MAC CAP 62F  
RED HAMCO ON TARGET 9H

	BW	WW	YW	Milk	TM
(CAA) EPD	+2.9	+35	+61	+20	+38
WTS	96	693	1230		
ADG	3.29-102	WDA 3.32-103	Age of Dam - 4 years		
CE *	Frame 6.3	WT 1145	Scrotal 36 cm		
Carcass	%LMY	REA	%IMF	Rib Fat	Rump Fat
	63.2	13.41	4.55	.25	.38

- \* A dark red Equal 508N son with added length & style in a moderate framed package.
- \* Above average performance on test, very good carcass data.



**Lot 42**  
**Red Hamco Equal**  
**405W**

**Lot 44** **RED HAMCO EQUAL 362W**

LRH 362W 1507246 March 17, 2009

RED SVR COMMANDER 47L  
**RED SSS EQUAL 508N**  
 RED SSS LARKABA 730F

RED BRYLOR RSTD HIGH CAPACITY  
**RED HAMCO ISABELLE 66S**  
 RED LRH ISABELLE 273P

RED SOUTH VIEW NO EQUAL 28H  
 RED SOUTH VIEW MISS MAXI 45H  
 RED SSS BOOMER 803B  
 RED MISS TOKUN LARKABA 96T  
 RED BJR HIGH CAPACITY 008  
 RED BRYLOR BONITA 36J  
 RED BRYLOR JR 25L  
 RED LRH ISSIE BIG IRON 1H

	BW	WW	YW	Milk	TM
(CAA) EPD	-1.8	+25	+45	+21	+33
WTS	79	683	1242		
ADG 3.58-111	WDA 3.30-102	Age of Dam - 3 years			
CE ***	Frame 5.4	WT 1095	Scrotal 37 cm		
Carcass	%LMY	REA	%IMF	Rib Fat	Rump Fat
	63.6	15.52	3.33	.3	.33

- \* A long bodied, wide loined bull with a wide muscular hip that performed very well on test.
- \* Dam is a good young High Capacity cow.
- \* Huge ribeye on this bull - 15.52
- \* A heifer bull that will add some extra performance & muscle to his offspring.

**Lot 45** **RED HAMCO EQUAL 382W**

DSH 382W 1507510 March 18, 2009

RED SVR COMMANDER 47L  
**RED SSS EQUAL 508N**  
 RED SSS LARKABA 730F

RED BUF CRK BARNEY 3474  
**RED HAMCO SIENA 65N**  
 RED BAR M SIENA'S ROBIN 44F

RED SOUTH VIEW NO EQUAL 28H  
 RED SOUTH VIEW MISS MAXI 45H  
 RED SSS BOOMER 803B  
 RED MISS TOKUN LARKABA 96T  
 RED BUF CRK BARON 2678  
 RED LMAN ROBIN HOOD 1174B  
 RED GIRVINMERE ROSE 473D

	BW	WW	YW	Milk	TM
(CAA) EPD	+1.3	+37	+65	+20	+39
WTS	85	721	1215		
ADG 3.21-99	WDA 3.35-104	Age of Dam - 6 years			
CE **	Frame 6.2	WT 1110	Scrotal 36 cm		
Carcass	%LMY	REA	%IMF	Rib Fat	Rump Fat
	62.8	12.35	3.7	.23	.3

- \* Another dark red, deep ribbed, straight topped bull with added style.
- \* Dam 65N was Larissa's 4H show calf that is very correct & always catches your eye in the herd.
- \* 65N had a Cub bull DSH 30R sell in our 2006 sale to Clifford Kopec & a Nyack bull DSH 486S that sold to Jay Sprott
- \* A bull that would work well on cows or heifers.



**Lot 45**  
**Red Hamco Equal**  
**382W**

**Lot 46** **RED HAMCO EQUAL 355W**

DSH 355W 1507494 March 16, 2009

RED SVR COMMANDER 47L  
**RED SSS EQUAL 508N**  
 RED SSS LARKABA 730F

RED BJR RAMBLER 5162  
**RED HAMCO ROSEBUD 91N**  
 RED HILL SPRINGS ROSE

RED SOUTH VIEW NO EQUAL 28H  
 RED SOUTH VIEW MISS MAXI 45H  
 RED SSS BOOMER 803B  
 RED MISS TOKUN LARKABA 96T  
 RED FCC RAMBO 502  
 BJR GOLDI 355-1122  
 RED LMAN ROBIN HOOD 1174B  
 RED TASSEL ROSE 82C

	BW	WW	YW	Milk	TM
(CAA) EPD	+1.0	+33	+55	+20	+37
WTS	88	673	1161		
ADG 3.10-96	WDA 3.20-99	Age of Dam - 6 years			
CE **	Frame 6.4	WT 1065	Scrotal 34 cm		
Carcass	%LMY	REA	%IMF	Rib Fat	Rump Fat
	61.7	15.19	5.26	.36	.37

- \* An Equal 508N son stamped out in the same pattern - Correct made with added style & thickness.
- \* Dam is a proven ET Rambler 5162 daughter out of our Donor cow Rose 3E.
- \* Excellent carcass data - 15.19" rib eye, & 5.26% IMF.
- \* Could be used on cows or heifers.

**Lot 47** **RED HAMCO EQUAL 317W**

DSH 317W 1507466 March 12, 2009

RED SVR COMMANDER 47L  
**RED SSS EQUAL 508N**  
 RED SSS LARKABA 730F

RED BRYLOR NEW TREND 22D  
**RED HAMCO SIENA 177S**  
 RED HAMCO ROBIN NONEBETTER 144

RED SOUTH VIEW NO EQUAL 28H  
 RED SOUTH VIEW MISS MAXI 45H  
 RED SSS BOOMER 803B  
 RED MISS TOKUN LARKABA 96T  
 SSS BLACK TREND 13B  
 RED MEADOW CK MISS SEAMAN 31A  
 RED AGH NONE BETTER 3F  
 RED BAR M SIENA'S ROBIN 44F

	BW	WW	YW	Milk	TM
(CAA) EPD	+1.9	+32	+54	+20	+36
WTS	89	630	1163		
ADG 3.44-106	WDA 3.07-95	Age of Dam - 3 years			
CE **	Frame 5.9	WT 1035	Scrotal 39 cm		
Carcass	%LMY	REA	%IMF	Rib Fat	Rump Fat
	63.7	13.11	3.86	.22	.27

- \* Another smooth made, straight topped 508N son.
- \* Dam is a young New Trend cow that is developing into a valued proven cow.
- \* This bull would work well on heifers or cows.

**Lot 48** **RED HAMCO EQUAL 265W**

DSH 265W 1507429 March 8, 2009

RED SVR COMMANDER 47L  
**RED SSS EQUAL 508N**  
 RED SSS LARKABA 730F

RED LCHMN ON TARGET 1016E  
**RED HAMCO LARKABA 125S**  
 RED RKY MTN LARKABA 22M

RED SOUTH VIEW NO EQUAL 28H  
 RED SOUTH VIEW MISS MAXI 45H  
 RED SSS BOOMER 803B  
 RED MISS TOKUN LARKABA 96T  
 RED LMAN ROBIN HOOD 1174B  
 RED LCHMN BLOXY C1176  
 RED BADLANDS BONUS 702  
 RED SSS LARKABA 847B

	BW	WW	YW	Milk	TM
(CAA) EPD	+3.2	+36	+59	+20	+38
WTS	92	660	1169		
ADG	3.35-103	WDA 3.09-96	Age of Dam - 3 years		
CE *	Frame 5.3	WT 1055	Scrotal 36.5 cm		
Carcass	%LMY	REA	%IMF	Rib Fat	Rump Fat
	63	14.15	3.98	.28	.19

- \* Another stylish, dark red, long bodied Equal 508N Son with a muscular hip.
- \* Dam is an ET On Target daughter out of our strong Larkaba cow family.
- \* Very good EPD's & carcass data.

**Lot 49** **RED HAMCO EQUAL 317W**

DSH 317W 1507466 March 12, 2009

RED SVR COMMANDER 47L  
**RED SSS EQUAL 508N**  
 RED SSS LARKABA 730F

RED BRYLOR NEW TREND 22D  
**RED HAMCO SIENA 177S**  
 RED HAMCO ROBIN NONEBETTER 144

RED SOUTH VIEW NO EQUAL 28H  
 RED SOUTH VIEW MISS MAXI 45H  
 RED SSS BOOMER 803B  
 RED MISS TOKUN LARKABA 96T  
 SSS BLACK TREND 13B  
 RED MEADOW CK MISS SEAMAN 31A  
 RED AGH NONE BETTER 3F  
 RED BAR M SIENA'S ROBIN 44F

	BW	WW	YW	Milk	TM
(CAA) EPD	+1.9	+32	+54	+20	+36
WTS	89	630	1163		
ADG	3.44-106	WDA 3.07-95	Age of Dam - 3 years		
CE **	Frame 5.9	WT 1035	Scrotal 39 cm		
Carcass	%LMY	REA	%IMF	Rib Fat	Rump Fat
	63.7	13.11	3.86	.22	.27

- \* Another smooth made, straight topped 508N son.
- \* Dam is a young New Trend cow that is developing into a valued proven cow.
- \* This bull would work well on heifers or cows.



Lot 49  
 Red Hamco Equal  
 317W

**Lot 50** **RED HAMCO EQUAL 234W**

DSH 234W 1507408 March 4, 2009

RED SVR COMMANDER 47L  
**RED SSS EQUAL 508N**  
 RED SSS LARKABA 730F

RED BRYLOR MASTERPLAN 17M  
**RED HAMCO TIARA 53S**  
 RED HAMCO TIARA IMPACT 306P

RED SOUTH VIEW NO EQUAL 28H  
 RED SOUTH VIEW MISS MAXI 45H  
 RED SSS BOOMER 803B  
 RED MISS TOKUN LARKABA 96T  
 RED BASIN SENSATION 702E  
 RED BRYLOR BONITA 66K  
 RED HAMCO RUFUS KING ROB 16H  
 RED HAMCO TIARA IMPACT 46H

	BW	WW	YW	Milk	TM
(CAA) EPD	+2.8	+34	+58	+16	+33
WTS	92	683	1217		
ADG	3.18-98	WDA 3.22-100	Age of Dam - 3 years		
CE *	Frame 6.3	WT 1110	Scrotal 37.5 cm		
Carcass	%LMY	REA	%IMF	Rib Fat	Rump Fat
	63.5	13.8	4.34	.25	.35

- \* A very good, dark red, smooth made bull with added muscle.
- \* Dam is an up and coming Master Plan cow out of the Tiara cow family.
- \* Balanced EPD's & good carcass data.

**Lot 51** **RED HAMCO EQUAL 280W**

DSH 280W 1507435 March 9, 2009

RED SVR COMMANDER 47L  
**RED SSS EQUAL 508N**  
 RED SSS LARKABA 730F

RED LCHMN ON TARGET 1016E  
**RED HAMCO LARKABA 168S**  
 RED RKY MTN LARKABA 22M

RED SOUTH VIEW NO EQUAL 28H  
 RED SOUTH VIEW MISS MAXI 45H  
 RED SSS BOOMER 803B  
 RED MISS TOKUN LARKABA 96T  
 RED LMAN ROBIN HOOD 1174B  
 RED LCHMN BLOXY C1176  
 RED BADLANDS BONUS 702  
 RED SSS LARKABA 847B

	BW	WW	YW	Milk	TM
(CAA) EPD	+3.2	+36	+59	+20	+38
WTS	91	707	1159		
ADG	3.00-90	WDA 3.09-96	Age of Dam - 3 years		
CE *	Frame 5.3	WT 1050	Scrotal 35 cm		
Carcass	%LMY	REA	%IMF	Rib Fat	Rump Fat
	63.5	13.87	3.45	.25	.35

- \* A correct made, dark red bull with style & natural thickness.
- \* Dam is a full ET sister to the dam of 265W (Lot 48).
- \* A lot of good bulls in this bull's pedigree.



**REFERENCE SIRE  
1 SON SELLS**

**Red Hamco Eskimo 203N**

Reg # (Cdn) 1152794

Red BJR Rambler 5162                      Red Lman Robin Hood 1174B  
S: Red Glacier Nyack 688                  D: Red Hamco Mimi Robin Hood 40J  
Red Glacier RB-LS                          Red Bieber Mimi 3418

CAA	B.W.	W.W.	Y.W.	Milk	TM
EPD	+4.2	+46	+76	+16	+39

- \* This bull is a full brother to a high selling bull that sold in our 2007 to Kevin Archibald, Killarney for \$4500.
- \* He is an easy fleshing bull that is extremely muscular & free moving.
- \* We used him in our commercial herd & he did such a great job so we now use him in our purebred herd.
- \* He sires more muscle than most bulls.



**Lot 55    **RED HAMCO BONUS 68W****

DSH 68W    1507308    February 7, 2009    (AI)

RED VGW BONUS 429                      RED BIEBER DESIGN 4140  
RED BADLANDS BONUS 702              VGW 4430 CHIEF 502  
RED RACHEL R405                          RED FCC RAMBO 502  
    RED OLE LANA 853 0076  
RED BIEBER CLASSIC 6753              RED BIEBER CLASSIC 4515  
RED HAMCO ELISA 131M              RED BIEBER DESIGN 3679  
RED BIEBER ELISA 3413              RED BIEBER LUCAS 2846  
    RED RAB EISA 516-7284

	BW	WW	YW	Milk	TM
(CAA) EPD	+4.4	+34	+60	+17	+34
WTS	99	652	1175		
ADG	3.08-95	WDA 3.18-99	Age of Dam - 7 years		
CE *	Frame 6.7	WT 1175	Scrotal 39 cm		
Carcass	%LMY 64.9	REA 15.61	%IMF 3.54	Rib Fat .25	Rump Fat .29

- \* A larger framed bull with added length & style.
- \* Huge ribeye - 15.61 & LMY 64.9%
- \* Great maternal genetics in this bull
- \* Recommend to use on cows.

**Lot 54    **RED HAMCO ESKIMO 349W****

DSH 349W    1507490    March 16, 2009

RED GLACIER NYACK 688                      RED BJR RAMBLER 5162  
RED HAMCO ESKIMO 203N                  RED GLACIER RB-LS  
RED HAMCO MIMI ROBIN HOOD 40J      RED LMAN ROBIN HOOD 1174B  
    RED BIEBER MIMI 3418  
RED RIVERDALE MONU 111G              RED SSS MONU 4 252D  
RED CUMNOCK LAKOTO 765L              RED RIVERDALE PRINCESS 44B  
RED CUMNOCK LAKOTO 995F              RED CUMNOCK TRADITION 534C  
    RED CUMNOCK LAKOTO 725D

	BW	WW	YW	Milk	TM
(CAA) EPD	+4.9	+43	+66	+15	+37
WTS	99	729	1271		
ADG	3.30-102	WDA 3.50-109	Age of Dam - 8 years		
CE *	Frame 6.9	WT 1165	Scrotal 37.5 cm		
Carcass	%LMY 63.5	REA 11.94	%IMF 3.95	Rib Fat .19	Rump Fat .23

- \* A long bodied, fancy, younger bull with a desirable muscle pattern.
- \* Both his dam 765L and Grand dam 995F are ELITE CAA dams. They were our picks at the Cumnock dispersal sale & they have produced very well.
- \* Recommend to use on cows.

Lot 54 - Red Hamco Eskimo 349W

**REFERENCE SIRE  
1 SON SELLS**

**Red Badlands Bonus 702 (Fargo)**

Reg # (Cdn) 936225

Red Bieber Design 4140                      Red Fcc Rambo 502  
S: Red VGW Bonus 429                      D: Red Rachel R405  
VGW 4430 Chief 502                          Red Ole Lana 853 0076

CAA	B.W.	W.W.	Y.W.	Milk	TM
EPD	+5.7	+41	+71	+19	40

- \* Fargo has sired some exceptional progeny including Phoenix, the 2002 Canadian Show Bull of the Year.
- \* Sires style, performance, & structurally correct.
- \* His progeny have sold well at many sales.



**REFERENCE SIRE  
5 SONS SELL**

**Red Hamco Mr. Sol Trend 96L**

Reg # (Cdn) 1080223

SSS Black Trend 13B                      JKG Chiefton L303  
S: **Red Brylor New Trend 22D**    D: **Red Bieber Sallee 3300**  
Red Meadow CK Seaman 31A      Red Bieber 1529-1266-1149

CAA	B.W.	W.W.	Y.W.	Milk	TM
EPD	+7.2	+60	+99	+16	+46

- \* 96L is sired by one of the most popular Red Angus bulls 'New Trend'
- \* 96L was sold in our 2002 sale & we liked him so much that we bought him back in 2005.
- \* His dam Sallee 3300 was a large framed, deep ribbed, dark red power cow we purchased from the Bieber mature cow dispersal.
- \* 97L a full ET brother was used in our herd for a number of years & produced some great progeny for us.
- \* Many full siblings have been sold out of this combination.
- \* Look at his numbers!!

**Lot 57 RED HAMCO SOL 351W**

DSH 351W      1507492      March 16, 2009

RED BRYLOR NEW TREND 22D      SSS BLACK TREND 13B  
**RED HAMCO MR SOL TREND 96L**      RED MEADOW CK MISS SEAMAN  
RED BIEBER SALLEE 3300              JKG CHIEFTON L303  
    RED BIEBER 1529-1266-1149  
RED BIEBER CLASSIC 6753              RED BIEBER CLASSIC 4515  
**RED HAMCO SAL 244M**                  RED BIEBER DESIGN 3679  
RED HAMCO SAL ON TARGET 65J      RED LCHMN ON TARGET 1016E  
    RED BIEBER SAL 4049

	BW	WW	YW	Milk	TM
(CAA) EPD	+2.8	+35	+61	+16	+33
WTS	90	652	1187		
ADG	3.26-101	WDA 3.26-101	Age of Dam - 7 years		
CE *	Frame 5.7	WT 1085	Scrotal 36 cm		
Carcass	%LMY	REA	%IMF	Rib Fat	Rump Fat
	63.9	14.3	3	.25	.25

- \* A smooth made, moderate framed 96L son that carries good natural thickness.
- \* Balanced EPD's & solid performance on test.

**Lot 58 RED HAMCO SOL 341W**

LRH 341W      1507245      March 15, 2009

RED BRYLOR NEW TREND 22D      SSS BLACK TREND 13B  
**RED HAMCO MR SOL TREND 96L**      RED MEADOW CK MISS SEAMAN  
RED BIEBER SALLEE 3300              JKG CHIEFTON L303  
    RED BIEBER 1529-1266-1149  
RED BRYLOR RSTD HIGH CAPACITY      RED BJR HIGH CAPACITY 008  
**RED HAMCO ISABELLE 50R**              RED BRYLOR BONITA 36J  
RED LRH ISSIE GOLD 279N              RED GLACIER NYACK 688  
    RED LRH ISABELLE 39J

	BW	WW	YW	Milk	TM
(CAA) EPD	+2.7	+46	+80	+18	+41
WTS	95	698	1190		
ADG	3.00-93	WDA 3.23-100	Age of Dam - 4 years		
CE *	Frame 5.4	WT 1080	Scrotal 36 cm		
Carcass	%LMY	REA	%IMF	Rib Fat	Rump Fat
	63.6	12.68	3.05	.21	.33

- \* A moderate framed 96L with thickness throughout & super set of EPD's.
- \* Dam 50R is a well bred model Angus cow out of our High Capacity 800M bull.

**Lot 56 RED HAMCO SOL 318W**

DSH 318W      1507467      March 12, 2009

RED BRYLOR NEW TREND 22D      SSS BLACK TREND 13B  
**RED HAMCO MR SOL TREND 96L**      RED MEADOW CK MISS SEAMAN 31A  
RED BIEBER SALLEE 3300              JKG CHIEFTON L303  
    RED BIEBER 1529-1266-1149  
RED BJR RAMBLER 5162                  RED FCC RAMBO 502  
**RED HAMCO LAKOTA 51P**                  BJR GOLDI 355-1122  
RED CUMNOCK LAKOTO 995F              RED CUMNOCK TRADITION 534C  
    RED CUMNOCK LAKOTO 725D

	BW	WW	YW	Milk	TM
(CAA) EPD	+2.4	+46	+77	+19	+42
WTS	90	739	1379		
ADG	3.77-116	WDA 3.77-117	Age of Dam - 5 years		
CE *	Frame 7.0	WT 1270	Scrotal 34.5 cm		
Carcass	%LMY	REA	%IMF	Rib Fat	Rump Fat
	63.6	12.3	3.08	.2	.3

- \* A typical Mr Sol Trend 96L son - well muscled, deep middled, with a thick rear quarter.
- \* Dam is an ET Rambler daughter out of our pick of the Cumnock Dispersal.
- \* Great performance on test - Tied 2nd for WDA index & 4th Overall (ADG & WDA)



Lot 56 - Red Hamco Sol 318W

**Lot 59 RED HAMCO SOL 402W**

DSH 402W      1507520      March 20, 2009

RED BRYLOR NEW TREND 22D      SSS BLACK TREND 13B  
**RED HAMCO MR SOL TREND 96L**      RED MEADOW CK MISS SEAMAN 31A  
RED BIEBER SALLEE 3300              JKG CHIEFTON L303  
    RED BIEBER 1529-1266-1149  
RED TOWAW INDEED 104H                  RED GLACIER DIVIDE 310  
**RED HAMCO ANGEL 46P**                  RED TOWAW MOLLY 67C  
RED ANGEL OF TAG-A-LONG 93J              RED MCRAE'S DAKOTA 2D  
    RED ANGEL OF TAG-A-LONG 62D

	BW	WW	YW	Milk	TM
(CAA) EPD	+0.5	+36	+65	+21	+40
WTS	89	706	1136		
ADG	2.96-91	WDA 3.15-98	Age of Dam - 5 years		
CE **	Frame 5.7	WT 1035	Scrotal 34 cm		
Carcass	%LMY	REA	%IMF	Rib Fat	Rump Fat
	61.1	11.54	5.57	.27	.32

- \* Another typical 96L son that exemplifies why we think so much of 96L.
- \* A dark red, deep sided bull out of a good uddered Indeed cow.
- \* Could be used on cows or heifers.

**Lot 60** **RED HAMCO SOL 396W**

DSH 396W 1507517 March 19, 2009

RED BRYLOR NEW TREND 22D SSS BLACK TREND 13B  
 RED HAMCO MR SOL TREND 96L RED MEADOW CK MISS SEAMAN 31A  
 RED BIEBER SALLEE 3300 JKG CHIEFTON L303  
 RED BIEBER 1529-1266-1149  
 RED MANITOBA EXPLOSION 60J RED LMAN ROBIN HOOD 1174B  
 RED HAMCO CRATER 61N RED BIEBER MIMI 3418  
 RED HAMCO TIARA BIG IRON 69K RED CUMNOCK STAR 139Z  
 RED TIARA OF TAG-A-LONG 57T



	BW	WW	YW	Milk	TM
(CAA) EPD	+1.7	+45	+81	+21	+43
WTS	84	699	1139		
ADG 3.00-92	WDA 3.15-98	Age of Dam - 6 years			
CE **	Frame 5.2	WT 1040	Scrotal 34 cm		
Carcass	%LMY	REA	%IMF	Rib Fat	Rump Fat
	63	13.23	3.86	.25	.28

**Offspring from Bulls purchased at the Hamco Cattle Co. Sale Qualify for the Canadian Angus Certification Program**  
**For Angus Tags & more Information contact:**  
**Canadian Angus Association**  
**1-866-571-8093**

- \* A correct made bull with a very desirable muscle pattern & depth of rib.
- \* Dam 61N (ELITE CAA dam) is definitely one of our fanciest cows out of our homebred bull Explosion.
- \* Impressive balanced EPD's, could be used on cows or heifers

**REFERENCE SIRE**  
**1 SON SELLS**

**Red Chopper K Top Design 64R**

Reg # (Cdn) 1304570

Red Woodhill Top Brass Red Rocker 870  
 S: Red Lchmn Top Brass 1049H D: Red SSS Soapy 607K  
 Red Leachman Mattie F1274 Red SSS Soapy 22H

CAA	B.W.	W.W.	Y.W.	Milk	TM
EPD	-1.2	+27	+59	+12	26



- \* Was our pick of the Herd Sires at Kaymac's dispersal.
- \* Top Design heifers sold very well at the Kaymac Dispersal
- \* Outcross genetics & calving ease.
- \* Has worked very well on heifers.

Red Lchmn Top Brass 1049H—sire of 64R

**Lot 61** **RED HAMCO TOP DESIGN 91W**

AGH 91W 1507206 February 12, 2009

RED LCHMN TOP BRASS 1049H RED LAKOTAS HEAVENLY 305  
 RED CHOPPER K TOP DESIGN 64R RED LEACHMAN PRILARK  
 RED SSS SOAPY 607K RED LMN IMPRESSIVE ROB 1095B  
 RED T G MONU ECHETA 19F  
 RED BRYLOR RSTD HI CAPACITY RED BJR HIGH CAPACITY 008  
 RED HAMCO ISABELLE 125T RED BRYLOR BONITA 36J  
 RED HAMCO ISABELLE 370R RED HAMCO KR DYNAMITE 93M  
 RED AGH NONE BETTER 2F

	BW	WW	YW	Milk	TM
(CAA) EPD	+2.0	+38	+67	+16	+35
WTS	94	703	1248		
ADG 3.40-105	WDA 3.16-98	Age of Dam - 2 years			
CE **	Frame 5.5	WT 1155	Scrotal 35.5 cm		
Carcass	%LMY	REA	%IMF	Rib Fat	Rump Fat
	62.6	13.98	4.58	.29	.27



Lot 61 - Red Hamco Top Design 91W

- \* Design 91W is a deep middled, correct made bull with very good EPD's & above average performance on test.
- \* The Dam is a High Capacity heifer out of our proven Isabelle family.
- \* Desirable ultrasound data & EPD's.



**Lot 64** **RED HAMCO BULLWINKLE 367W**

DSH 367W 1507503 March 17, 2009

RED BJR MAKE MY DAY 981  
**RED HAMCO BULLWINKLE 153R**  
 RED BIEBER SALLEE 3300

RED BJR EASY RIDER 781  
 RED BJR TOW KANA 117-710  
 JKG CHIEFTON L303  
 RED BIEBER1529-1266-1149  
 RED LCHMN ON TARGET 1016E  
 RED BIEBER SAL 4049  
 RED CUMNOCK STAR 139Z  
 RED GIRVINMERE ROSE 473D

RED HAMCO SOL ON TARGET 11J  
**RED HAMCO IRON ROSE 241M**  
 RED HAMCO IRON ROSE 1G

	BW	WW	YW	Milk	TM
(CAA) EPD	+3.7	+45	+79	+10	+33
WTS	98	761	1294		
ADG 3.10-96	WDA 3.57-111	Age of Dam - 7 years			
CE *	Frame 6.2	WT 1185	Scrotal 38 cm		
Carcass	%LMY	REA	%IMF	Rib Fat	Rump Fat
	57	12.86	3.9	.47	.39

\* A dark red, deep sided bull with good growth & performance traits.  
 \* Dam is a very proven cow out of our foundation Rose cow family.

**Lot 65** **RED HAMCO BULLWINKLE 350W**

DSH 350W 1507491 March 16, 2009

RED BJR MAKE MY DAY 981  
**RED HAMCO BULLWINKLE 153R**  
 RED BIEBER SALLEE 3300

RED BJR EASY RIDER 781  
 RED BJR TOW KANA 117-710  
 JKG CHIEFTON L303  
 RED BIEBER1529-1266-1149  
 RED BJR JR 107  
 RED GOLDEN DAWN MISS 21J  
 RED SSS HIGH MARK 272D  
 RED LMG JESSI 832

RED BRYLOR JR 25L  
**RED HAMCO JESSI 301P**  
 RED HAMCO JESSIE 71M

	BW	WW	YW	Milk	TM
(CAA) EPD	+2.6	+39	+74	+14	+34
WTS	96	695	1205		
ADG 3.17-98	WDA 3.32-103	Age of Dam - 5 years			
CE *	Frame 6.2	WT 1105	Scrotal 37 cm		
Carcass	%LMY	REA	%IMF	Rib Fat	Rump Fat
	61.7	11.01	6.34	.23	.40

\* A dark red, deep sided bull that looks a lot like his sire - Bullwinkle. 153R is a very consistent sire that always sires good, growthy calves & hardly any culls.  
 \* Lots of calving ease on the bottom side of this pedigree.



Lot 64  
 Red Hamco Bullwinkle  
 367W

**REFERENCE SIRE**  
**1 SON SELLS**

**Red LRH Mr Pris Robber 67L**

Reg # (Cdn) 1047955

Red Lman King Rob 8621  
**S: Red Lchmn Gold Robber 1909E**  
 Red Lachman Larkaba 6384

Red Lman None Better 9604  
**D: Red Leachman Prilark 100G**  
 Red Leachman Prilark 6374

CAA	B.W.	W.W.	Y.W.	Milk	TM
EPD	-3.1	+31	+64	+25	+40

\* 67L was one of our high selling bulls in our 2002 sale to Doug Wilson for \$5500.  
 \* We had the chance to buy him back a few years ago & we jumped at it because of his phenotype, pedigree, & progeny.  
 \* An easy fleshing, good footed bull that has done a very good job for us.  
 \* Gold Robber 1909E is considered one of King Rob's best sons.

**Lot 66** **RED HAMCO GOLDROBBER 346W**

DSH 346W 1507487 March 15, 2009

RED LCHMN GOLD ROBBER 1909E  
**RED LRH MR PRIS ROBBER 67L**  
 RED LEADHAM PRILARK 100G

RED LMAN KING ROB 8621  
 RED LACHMAN LARKABA 6384  
 RED LMAN NONE BETTER 9604  
 RED LEACHMAN PRILARK 6374  
 RED CALIFORNIA SUPREME 2087  
 RED JIL 2560  
 RED BJR MAKE MY DAY 981  
 RED HAMCO SAL CYBERSMART 87J

RED LODI PRINCE 2632  
**RED HAMCO SAL PRINCESS 148R**  
 RED HAMCO MISS SAL DAY 12L

	BW	WW	YW	Milk	TM
(CAA) EPD	-1.0	+32	+60	+20	+37
WTS	85	661	1136		
ADG 3.05-94	WDA 3.08-96	Age of Dam - 4 years			
CE ***	Frame 5.4	WT 1030	Scrotal 34.5 cm		
Carcass	%LMY	REA	%IMF	Rib Fat	Rump Fat
	65.2	14.96	3.75	.22	.32

\* A dark red, long bull with a muscular hindquarter.  
 \* Calving ease throughout this pedigree & impressive EPD's.  
 \* Very good carcass data with a large ribeye - 14.96.

**REFERENCE SIRE  
1 SON SELLS**

**Red Glacier Nyack 688**

Reg # (US) 515078 (Cdn) 968288

FCC Rambo 502  
S: **BJR Rambler 5162**  
BJR Goldi 355-1122

BFLO CR VC Chief 105  
D: **Glacier RB-LS**  
Glacier HI-RB-LS

CAA	B.W.	W.W.	Y.W.	Milk	TM
EPD	+2	+26	+50	+17	+30

- \* Same cow family that produced Logan and Marias
- \* ABS sold thousand of doses of Nyack semen
- \* Structurally correct with eye appeal and added muscle
- \* He stamps them out like a cookie cutter— very consistent pattern
- \* High maternal genetics, calving ease bull
- \* Nyack bred well this year as a 13 year old, & I'm sure he had another year in him, but with semen in the tank & his advancing age, we decided to ship him for a good dollar. Nyack exemplifies the longevity of the Red Angus cattle.
- \* He always puts a great hip onto all of his offspring.

**Lot 67** | **RED HAMCO NYACK 336W**

DSH 336W 1507479 March 14, 2009

RED BJR RAMBLER 5162  
**RED GLACIER NYACK 688**  
RED GLACIER RB-LS

RED FCC RAMBO 502  
BJR GOLDI 355-1122  
RED BUFFALO CREEK VC CHIEF 105  
GLACIER HI-RB-LS  
SSS BLACK TREND 13B  
RED MEADOW CK MISS SEAMAN 31  
RED LMB ELWAY 938  
RED BIEBER LASS 2460

	BW	WW	YW	Milk	TM
(CAA) EPD	+2.2	+30	+54	+21	+36
WTS	95	615	1139		
ADG	3.44-106	WDA 3.12-97	Age of Dam - 8 years		
CE *	Frame 5.7	WT 1045	Scrotal 33 cm		
Carcass	%LMY	REA	%IMF	Rib Fat	Rump Fat
	61.8	14.25	4.07	.33	.43

- \* A long made, well muscled, square hipped bull so typical of the Nyack sons.
- \* This dam 112L is an excellent New Trend daughter that has produced a number of excellent daughters that remain in our herd, a daughter that sold to Phil Bernie, & a son that sold to Jim Morrison.
- \* Good EPD's & ultrasound data.

**REFERENCE SIRE  
1 SON SELLS**

**Red Towaw V.I. 173R**

Reg # (Cdn) 1291791

Red Towaw Indeed 104H  
S: **Red Towaw Very Interesting 22L**  
Red Towaw Mabel 38J

Red Towaw Expansion 36G  
D: **Red Towaw Rosette 98J**  
Red Towaw Rosette 116C

CAA	B.W.	W.W.	Y.W.	Milk	TM
EPD	-0.3	+32	+61	+17	+34

- \* We purchased this bull from the 2007 Towaw Bull Sale.
- \* His sire is a top son of Indeed, & his dam is an outcross for our herd.
- \* He was used mainly on heifers & we were very pleased with his calving ease & growth of his calves.

**Lot 68** | **RED HAMCO V.I. 202W**

LRH 202W 1541975 February 27, 2009

RED TOWAW VERY INTERESTING 22L  
**RED TOWAW V.I. 173R**  
RED TOWAW ROSETTE 98J

RED TOWAW INDEED 104H  
RED TOWAW MABEL 38J  
RED TOWAW EXPANSION 36G  
RED TOWAW ROSETTE 116C  
RED BJR MAKE MY DAY 981  
RED BIEBER SALLEE 3300  
RED BRYLOR PHOENIX 16K  
RED LRH 154G MISS CLASSIC 112K

	BW	WW	YW	Milk	TM
(CAA) EPD	+0.5	+35	+72	+18	+35
WTS	82	719	1202		
ADG	3.13-96	WDA 3.09-96	Age of Dam - 2 years		
CE **	Frame 5.7	WT 1080	Scrotal 37 cm		
Carcass	%LMY	REA	%IMF	Rib Fat	Rump Fat
	62.8	13.01	2.81	.25	.34

- \* A dark red, long bodied bull with balanced EPD's & strong maternal genetics.
- \* Balanced numbers throughout on this bull that could be used on cows or heifers.

**REFERENCE SIRE  
1 SON SELLS**

**Red Hamco Mulberry 911T**

Reg # (Cdn) 1461393

Red Compass Mulberry 449M  
S: **Red Fine Line Mulberry 26P**  
Red DUS Fayette 8G

Red Brylor New Trend 22D  
D: **Red PTTV Countess 13'97**  
Red Heathan's Countess 1E

CAA	B.W.	W.W.	Y.W.	Milk	TM
EPD	+6.8	+52	+106	+23	+49

- \* A Mulberry son out of the great Brylor donor cow Countess 13'97 - Dam of Stallion 19J, Littlestone, etc.
- \* An impressive individual who is adding a lot of performance to his offspring.

**Lot 69** | **RED HAMCO MULBERRY 911 314W**

DSH 314W 1507462 March 12, 2009

RED FINE LINE MULBERRY 26P  
**RED HAMCO MULBERRY 911T**  
RED PTTV COUNTESS 13'97

RED COMPASS MULBERRY 449M  
RED DUS FAYETTE 8G  
RED BRYLOR NEW TREND 22D  
RED HEATHAN'S COUNTESS 1E  
RED BJR RAMBLER 5162  
RED VGW UMPIRE YUMA 9266  
RED HAMCO MR SOL 97L  
RED BIEBER ESIA 4254

	BW	WW	YW	Milk	TM
(CAA) EPD	+2.5	+39	+77	+20	+39
WTS	91	654	1200		
ADG	3.13-96	WDA 3.18-99	Age of Dam - 3 years		
CE *	Frame 5.9	WT 1070	Scrotal 34 cm		
Carcass	%LMY	REA	%IMF	Rib Fat	Rump Fat
	60.9	13.52	3.29	.34	.36

- \* A deep ribbed, correct made, moderate framed bull with added muscle & style.
- \* Out of good young Rambler 1000 daughter from the Esia family.

**REFERENCE SIRE  
2 SONS SELL**

**RED HAMCO INDEED 145S**

Reg # (Cdn)1355172

S: Red Glacier Divide 310  
Red Towaw Indeed 104H  
Red Towaw Molly 67C

D: Red Lchmn On Target 1016E  
Red Hamco On Target 8H  
Red DSH None Better 70F

CAA	B.W.	W.W.	Y.W.	Milk	TM
EPD	+0.7	+23	+45	+19	+30

- \* Indeed 145S was our high selling bull in our 2007 sale to Rick Cones from Ringstead Ranch for \$7100.
- \* He was an outstanding bull that we thought a lot of so we exercised our right to collect some semen for in herd use.



Pictured as a yearling

**Lot 70** **RED HAMCO INDEED 3W**

DSH 3W 1507260 January 25, 2009 (AI) (Twin)

RED TOWAW INDEED 104H  
**RED HAMCO INDEED 145S**  
RED HAMCO ON TARGET 8H

RED PERKS CHATEAU 309R  
**RED HAMCO BAYBERRY 127T**  
RED HAMCO BAYBERRY 224N

RED GLACIER DIVIDE 310  
RED TOWAW MOLLY 67C  
RED TOWAW MOLLY 67C  
RED LCHMN ON TARGET 1016E  
RED GLACIER CHATEAU 744  
RED PERKS MISS RAMBO 8105  
RED SVR SIZZLER 40L  
RED CUMNOCK BAYBERRY

	BW	WW	YW	Milk	TM
(CAA) EPD	+1.4	+29	+51	+17	+31
WTS	68	683	1254		
ADG	3.46-107	WDA	3.15-98	Age of Dam - 2 years	
CE ***	Frame	5.8	WT	1205	Scrotal 36 cm
Carcass	%LMY	REA	%IMF	Rib Fat	Rump Fat
	59.1	12.2	4.78	.37	.31



Lot 70 - Red Hamco Indeed 3W

- \* A long, dark red, moderate framed bull with a wide, well muscled hind quarter.
- \* Very good performance on test for this well bred heifer bull.
- \* Dam is a promising young cow out of Perks Chateau 309R.

**Lot 71** **RED HAMCO INDEED 198W**

DSH 198W 1507386 February 27, 2009 (AI)

RED TOWAW INDEED 104H  
**RED HAMCO INDEED 145S**  
RED HAMCO ON TARGET 8H

RED SSS HIGH MARK 272D  
**RED HAMCO EUCLA 46M**  
RED BIEBER EUCLA 3452

RED GLACIER DIVIDE 310  
RED TOWAW MOLLY 67C  
RED TOWAW MOLLY 67C  
RED LCHMN ON TARGET 1016E  
RED SSS HIGH MARK LINE 402M  
RED SSS MISS REDCAP 87T  
RED BIEBER LINCOLN 1924  
RED BIEBER 1543-380-3145

	BW	WW	YW	Milk	TM
(CAA) EPD	+0.9	+24	+45	+13	+24
WTS	88	605	1131		
ADG	3.24-100	WDA	3.07-95	Age of Dam - 7 years	
CE **	Frame	5.2	WT	1075	Scrotal 39 cm
Carcass	%LMY	REA	%IMF	Rib Fat	Rump Fat
	61.7	11.01	3.14	.23	.18



Lot 71 - Red Hamco Indeed 198W

- \* A smaller framed, deep made bull with a perfect Angus head.
- \* Dam is an ET daughter out of our foundation Bieber Eucla cow.
- \* Could be used on cows or heifers.

**REFERENCE SIRE**

**1 SON SELLS**

**Red Hamco KR Dynamite 93M**

Reg # (Cdn) 1137951

Red Lman King Rob 8621 BJR Yogo 002-104  
 S: Red Lman Robin Hood 1174B D: Red Bieber Mimi 3418  
 Red Leachman Prilark Red Bieber Lincoln 1972

CAA	B.W.	W.W.	Y.W.	Milk	TM
EPD	+3.4	+37	+77	+16	+34

- \* Dynamite is a full brother to our 1999 high selling bull—Explosion \$8500
- \* His Dam, Mimi is our foundation donor cow & always transmits her easy fleshing ability.
- \* An impressive individual that has great EPD's



Dam of 93M - Red Bieber Mimi 3418

**Lot 72** **RED HAMCO DYNAMITE 302W**

DSH 302W 1507454 March 11, 2009

RED LMAN ROBIN HOOD 1174B RED LMAN KING ROB 8621  
**RED HAMCO KR DYNAMITE 93M** RED LEACHMAN PRILARK  
 RED BIEBER MIMI 3418 BJR YOGO 002-104  
 RED FBAC SOME R BETTER 1E RED BIEBER LINCOLN 1972  
**RED HAMCO REBA 283K** RED LMAN NONE BETTER 9604  
 RED ANDERSON'S REBA 8D RED BAAC TIBBIE 4C  
 RED MVHF LEADER 033A  
 RED RUSTY CR REBELLO 26Z

	BW	WW	YW	Milk	TM
(CAA) EPD	+1.7	+34	+69	+14	+31
WTS	82	681	1208		
ADG 3.20-99	WDA 3.31-100	Age of Dam - 9 years			
CE **	Frame 5.9	WT 1120	Scrotal 37 cm		
Carcass	%LMY	REA	%IMF	Rib Fat	Rump Fat
	62.1	13.43	5.58	.29	.29

- \* A correct made bull with natural thickness & very good EPD's.
- \* Solid performance on test.
- \* Dam is a 9 year old cow that has stayed in the herd due to her consistent production.
- \* Could be used on cows or heifers.



Could we have some privacy please!

**REFERENCE SIRE**

**1 SON SELLS**

**Red Hamco Franchise 122R**

Reg # (Cdn) 1295099

Red Lman King Rob 8621 Red Glacier Divide 310  
 S: Red Lman Robin Hood 1174B D: Red Hamco Indigo Divide 408H  
 Red Leachman Prilark Red Rab Indigo 1073-982

CAA	B.W.	W.W.	Y.W.	Milk	TM
EPD	-0.8	+25	+43	+22	+35

- \* Franchise is an ET Robin Hood son out of what we consider our top cow 408H an "Elite" Dam.
- \* He worked very well & his calves look very good.
- \* Robin Hood 1174B is certainly a Hall of Fame "Red Angus" sire

**Lot 73** **RED HAMCO FRANCHISE 364W**

DSH 364W 1507501 March 17, 2009

RED LMAN ROBIN HOOD 1174B RED LMAN KING ROB 8621  
**RED HAMCO FRANCHISE 122R** RED LEACHMAN PRILARK  
 RED HAMCO INDIGO DIVIDE 408H RED GLACIER DIVIDE 310  
 RED BIEBER HAWKER 7101 RED RAB INDIGO 1073-982  
**RED HAMCO ESIA 92N** RED JHE CANYON HAWK 1062  
 RED HAMCO ESIA NONE BETTER 167J RED BIEBER DAPHINE 4871  
 RED BIEBER EDIA 6641

	BW	WW	YW	Milk	TM
(CAA) EPD	+0.4	+29	+48	+19	+33
WTS	90	697	1173		
ADG 3.04-94	WDA 3.24-101	Age of Dam - 6 years			
CE ***	Frame 6.4	WT 1075	Scrotal 36 cm		
Carcass	%LMY	REA	%IMF	Rib Fat	Rump Fat
	59.3	12.51	3.67	.37	.46

- \* A long, stylish bull with a smooth head & desirable muscle pattern.
- \* Dam is a Bieber Hawker daughter out of one of CAA Elite cows - 167J.
- \* Could be used on heifers or cows.

**REFERENCE SIRE  
5 SONS SELL**

**PRAIRIELANE IDEAL 1418-0051**

Reg # (Cdn) 1011706

Ideal 8103 Of Eldo 5110 5213      Ideal 033 Of 7365 8263  
S: **Ideal 1418 Of 8103 4286**      D: **Prairieland 033 Rosesbud 4034**  
E E 4286 Of Ideal 2240 1254      Prairielane 8087 Rosebud 0190

CAA    B.W.    W.W.    Y.W.    Milk    TM  
EPD    +3.5    +77    +125    +23    +62

- \* We purchased this bull as a 4 yr old from the Prairielane Bull Sale in 2004
- \* He has a great phenotype and outstanding performance numbers that continue to improve.
- \* You will look very hard to find a bull with such good performance numbers.
- \* Also sires excellent disposition and easy fleshing ability
- \* He puts his stamp on every calf he produces
- \* His progeny out perform most AI sires & he certainly deserves to be an AI sire.



**Lot 74    BLACK HAMCO IDEAL 140W**

AGH 140W    1507208    February 18, 2009 (AI)

IDEAL 1418 OF 8103 4286      IDEAL 8103 OF ELDO 5110 5213  
**PRAIRIELANE IDEAL 1418-0051**      E E 4286 OF IDEAL 2240 1254  
PRAIRIELANE 033 ROSEBUD 4034      IDEAL 033 OF 7365 8263  
PRAIRIELANE 8087 ROSEBUD 0190  
SUMMITCREST HI FLYER 3B18      HOFF HI FLYER S C 7134  
**BLACK AGH LUCY FRED 16L**      SUMMITCREST LASS 229Y  
BLACK AGH MISS RITO MAX 13J      RITO 3M2 OF 5H11 GT MAXIMUM  
KEMBAR LUCY 87G

	BW	WW	YW	Milk	TM
(CAA) EPD	+2.5	+59	+96	+19	+49
WTS	90	699	1237		
ADG 3.38-104	WDA 3.37-105	Age of Dam - 8 years			
CE **	Frame 5.8	WT 1210	Scrotal 38 cm		
Carcass	%LMY	REA	%IMF	Rib Fat	Rump Fat
	64	14.48	4.1	.25	.24

- \* A moderate framed, long bodied, thick bull that performed well on test & has impressive EPD's.
- \* Dam is a proven cow that has done it again this year.
- \* Could use on heifers or cows.

**Lot 75    BLACK HAMCO IDEAL 154W**

DSH 154W    1507354    February 19, 2009 (AI)

IDEAL 1418 OF 8103 4286      IDEAL 8103 OF ELDO 5110 5213  
**PRAIRIELANE IDEAL 1418-0051**      E E 4286 OF IDEAL 2240 1254  
PRAIRIELANE 033 ROSEBUD 4034      IDEAL 033 OF 7365 8263  
PRAIRIELANE 8087 ROSEBUD 0190  
DRYLAND ULTRA -117-      WAVENY ULTRA 16F  
**BLACK HAMCO TIBBIE 318M**      HOLLBROOK ERICA 6H  
BLACK HAMCO MS TIBBIE ROYCE 54      STEVENSON ROYCE 741C  
MVF TIBBIE 64C

	BW	WW	YW	Milk	TM
(CAA) EPD	+1.5	+52	+87	+20	+46
WTS	82	673	1212		
ADG 3.43-106	WDA 3.29-102	Age of Dam - 7 years			
CE **	Frame 6.1	WT 1180	Scrotal 35 cm		
Carcass	%LMY	REA	%IMF	Rib Fat	Rump Fat
	63.6	15.2	3.73	.29	.24

- \* When you see these 3 Ideal 0051 sons you will understand why we keep using him through AI.
- \* 154W is stamped the same - deep middled, thick throughout, with a muscular deep hindquarter.
- \* Very good carcass data - 15.2 ribeye



Lot 75  
Black Hamco Ideal  
154W

**Lot 76** **BLACK HAMCO IDEAL 177W**

DSH 177W 1507371 February 23, 2009 (AI)

IDEAL 1418 OF 8103 4286  
**PRAIRIELANE IDEAL 1418-0051**  
 PRAIRIELANE 033 ROSEBUD 4034  
 YOUNG DALE MONARCH 12E  
**YOUNG DALE ERICA 160L**  
 SHONDRIL BARESS 15S

IDEAL 8103 OF ELDO 5110 5213  
 E E 4286 OF IDEAL 2240 1254  
 IDEAL 033 OF 7365 8263  
 PRAIRIELANE 8087 ROSEBUD  
 DALRENE EXTRA 36A  
 YOUNG DALE GRACE 16C  
 Z A F ADMINISTRATOR 131  
 SHONDRIL BARESS 9K

	BW	WW	YW	Milk	TM
(CAA) EPD	+4.8	+57	+93	+14	+42
WTS	78	614	1163		
ADG	3.49-108	WDA 3.15-98	Age of Dam - 8 years		
CE *	Frame 5.1	WT 1115	Scrotal 36 cm		
Carcass	%LMY	REA	%IMF	Rib Fat	Rump Fat
	58.7	10.86	4.19	.34	.29

- \* Ideal 177W is a typical Ideal 0051 son - deep ribbed, & thick throughout with added muscle.
- \* Dam is a full sister to a Agribition champion bull & grandsire is also a former Agribition champion.



Lot 76 - Black Hamco Ideal 177W

**Lot 77** **BLACK HAMCO IDEAL 87W**

AGH 87W 1507205 February 12, 2009 (AI)

IDEAL 1418 OF 8103 4286  
**PRAIRIELANE IDEAL 1418-0051**  
 PRAIRIELANE 033 ROSEBUD 4034  
 BON VIEW NEW DESIGN 878  
**BLACK AGH DESIGNER JEANS 40N**  
 KEMBAR LUCY 87G

IDEAL 8103 OF ELDO 5110 5213  
 E E 4286 OF IDEAL 2240 1254  
 IDEAL 033 OF 7365 8263  
 PRAIRIELANE 8087 ROSEBUD  
 B/R NEW DESIGN 036  
 BON VIEW FAMMER 85  
 MVF DIRECTOR 55A  
 KEMBAR LUCY 13B

	BW	WW	YW	Milk	TM
(CAA) EPD	+3.3	+47	+80	+18	+42
WTS	91	575	1108		
ADG	3.12-96	WDA 2.97-92	Age of Dam - 6 years		
CE *	Frame 6.0	WT 1085	Scrotal 36 cm		
Carcass	%LMY	REA	%IMF	Rib Fat	Rump Fat
	61.6	13.99	3.02	.33	.46

- \* Ideal 87W is a well muscled, deep sided bull with a wide hip.
- \* Dam 40N is a good uddered cow out of the breed great New Design 878.



Lot 77 - Black Hamco Ideal 87W

**Lot 78** **BLACK HAMCO IDEAL 120W**

DSH 120W 1507334 February 15, 2009 (AI)

IDEAL 1418 OF 8103 4286  
**PRAIRIELANE IDEAL 1418-0051**  
 PRAIRIELANE 033 ROSEBUD 4034  
 GIBB ILLINI  
**BLACK HAMCO COUNTESS 54R**  
 BLACK HAMCO COUNTESS 229N

IDEAL 8103 OF ELDO 5110 5213  
 E E 4286 OF IDEAL 2240 1254  
 IDEAL 033 OF 7365 8263  
 PRAIRIELANE 8087 ROSEBUD 0190  
 BON VIEW BANDO 598  
 GIBB BARBARA LASS 6603  
 BLACK HAMCO TIBBIE LIMITED  
 BLACK HAMCO MISS MONARCH 4J

	BW	WW	YW	Milk	TM
(CAA) EPD	+2.8	+56	+92	+22	+50
WTS	92	714	1185		
ADG	3.04-94	WDA 3.20-100	Age of Dam - 4 years		
CE **	Frame 6.3	WT 1160	Scrotal 37 cm		
Carcass	%LMY	REA	%IMF	Rib Fat	Rump Fat
	61.7	10.93	4.03	.23	.35

- \* An Ideal 0051 son that is thick made & deep middled.
- \* This bull has very good EPD's.
- \* Should work well on cows or heifers.



Overlooking the main farm

**REFERENCE SIRE  
1 SON SELLS**

**SAV Net Worth 4200**

Reg # (Cdn) 1309743

Sitz Traveler 8180 SAF 598 Bando 5175  
S: SAV 8180 Traveler 004 D: SAV May 2410  
Boyd Forever Lady 8003 SAV May 6269

CAA	B.W.	W.W.	Y.W.	Milk	TM
EPD	+4.8	+59	+112	+32	+62

- \* Performance Powerhouse, record setting SAV herd sire
- \* More body mass, muscle, base width & overall power both phenotypically & genotypically than his sire.



**Lot 79 BLACK HAMCO NET WORTH 92W**

DSH 92W 1507319 February 12, 2009 (AI)

SAV 8180 TRAVELER 004 SITZ TRAVELER 8180  
SAV NET WORTH 4200 BOYD FOREVER LADY 8003  
SAV MAY 2410 SAF 598 BANDO 5175  
SAV MAY 6269  
STEVENSON BRUNO 561G STEVENSON ROYCE 741C  
BLACK HAMCO LASS 39N JRS ENCHANTRESS 16A  
BLACK HAMCO MISS HI FLYER 83L SUMMITCREST HI FLYER 83L  
GLENNIE M'BROOK LASS 32X

	BW	WW	YW	Milk	TM
(CAA) EPD	+2.0	+52	+91	+26	+52
WTS	81	689	1206		
ADG	3.30-102	WDA 3.29-102	Age of Dam - 6 years		
CE **	Frame 5.7	WT 1200	Scrotal 39 cm		
Carcass	%LMY	REA	%IMF	Rib Fat	Rump Fat
	61.2	13.58	3.69	.33	.28

- \* A very well bred Net Worth son that is built just like his famous sire - very deep ribbed, wide topped & thick throughout.
- \* Dam Lass 39N is a standout cow & out of a very good cow family.
- \* Good performance on test & very good EPD's.



Lot 79 - Black Hamco Net Worth 92W

**REFERENCE SIRE  
1 SON SELLS**

**BUFFALOS CONCLUSIVE BN46**

Reg # (Cdn) 1314967

Leachman Right Time B/R New Fronter 095  
S: Hyline Right Time 38 D: Buffalos Hazel BN41  
Hyline Pride 265 Buffalos Hazel BN2

CAA	B.W.	W.W.	Y.W.	Milk	TM
EPD	+4.5	+46	+80	+13	+36

- \* Conclusive is known for his sound structure, muscle shape & flawless appeal.
- \* Sired by Hyline Right Time, one of the most sought after sires in the US today.
- \* This 7 frame bull is balanced with a strong top, great hip, plenty of volume, & good feet & legs.
- \* In terms of scale, performance, pedigree & phenotype, Conclusive has a lot to offer.



**Lot 80 BLACK HAMCO CONCLUSIVE 85W**

DSH 85W 1507318 February 11, 2009 (AI)

HYLINE RIGHT TIME 338 LEACHMAN RIGHT TIME  
BUFFALOS CONCLUSIVE BN46 HYLINE PRIDE 265  
HYLINE PRIDE 265 B/R NEW FRONTIER 095  
YOUNG DALE MONARCH 12E BUFFALOS HAZEL BN23  
YOUNG DALE ERICA 93L DALRENE EXTRA 36A  
SHRONDRIL BARESS 15S YOUNG DALE GRACE 16C  
Z A F ADMINISTRATOR 131  
SHONDRIL BARESS 9K

	BW	WW	YW	Milk	TM
(CAA) EPD	+4.1	+41	+67	+8	+29
WTS	85	614	1151		
ADG	3.38-104	WDA 3.10-96	Age of Dam - 8 years		
CE *	Frame 5.5	WT 1135	Scrotal 38 cm		
Carcass	%LMY	REA	%IMF	Rib Fat	Rump Fat
	64.1	15.27	4.85	.27	.23

- \* An eye catching bull with added style that is thick topped with a wide, well muscled hip.
- \* Dam is a full sister to a former Agribition champion.
- \* Very impressive carcass data - 64.1 %LMY, 15.27 ribeye, 4.85% IMF



**Lot 84** ***BLACK HAMCO NEW DEAL 426W***

AGH 426W 1507219 March 23, 2009

PRAIRIELANE IDEAL 7451-2014 IDEAL 7451 OF 8103 4465  
**PRAIRIELANE 7451-2014-5004** PRAIRIELANE MAX DUCHESS  
 PRAIRIELANE 4002 BLACK 6037 BANG 2083 PRAIRIELANE 4002  
 PRAIRIELANE 033 BLACK 4047  
 RITO 3M2 OF 5H11 GT MAXIMUM G T MAXIMUM  
**BLACK AGH MISS RITO MAX 13J** RITA 5H11 OF 1B14 RITO 9J9  
 KEMBAR LUCY 87G MVF DIRECTOR 55A  
 KEMBAR LUCY 13B

	BW	WW	YW	Milk	TM
(CAA) EPD	+3.0	+46	+79	+14	+37
WTS	87	686	1248		
ADG	3.34-128	WDA 3.43-108	Age of Dam - 10 years		
CE **	Frame 5.5	WT 1120	Scrotal 35 cm		
Carcass	%LMY	REA	%IMF	Rib Fat	Rump Fat
	64	15.14	3.91	.27	.24

- \* A very impressive bull in all categories
- \* This thick, very deep made bull demonstrates the thickness & muscle that 5004 sons will add to your calves.
- \* Finished 1st for ADG & tied 3rd overall.
- \* Dam is valued older cow in the herd that just keeps on producing.
- \* Good carcass data - 15.14 ribeye!!



Lot 84 - Black Hamco New Deal 426W

**Lot 85** ***BLACK HAMCO NEW DEAL 436W***

DSH 436W 1507546 March 24, 2009

PRAIRIELANE IDEAL 7451-2014 IDEAL 7451 OF 8103 4465  
**PRAIRIELANE 7451-2014-5004** PRAIRIELANE MAX DUCHESS  
 PRAIRIELANE 4002 BLACK 6037 BANG 2083 PRAIRIELANE 4002  
 PRAIRIELANE 033 BLACK 4047  
 HOFF TRIUMPH S C 927 HOFF NORTHLANDER S C 6029  
**BLACK HAMCO TIBBIE TRIUMPH 12K** HOFF QUEEN OF SPADES S C  
 MVF TIBBIE 64C V DAR NEW TREND 315  
 MVF TIBBIE 48W

	BW	WW	YW	Milk	TM
(CAA) EPD	+0.6	+50	+86	+17	+42
WTS	84	754	1323		
ADG	3.28-101	WDA 3.65-113	Age of Dam - 9 years		
CE **	Frame 7.0	WT 1185	Scrotal 34 cm		
Carcass	%LMY	REA	%IMF	Rib Fat	Rump Fat
	61.4	14.1	3.04	.34	.46

- \* Another deep middled, wide topped bull, thick muscled bull.
- \* Dam is an older, very proven ET daughter out of our Foundation black donor cow 64C.
- \* These sons are an impressive group & are all stamped the same.
- \* Could use on cows or heifers.



Lot 85 - Black Hamco New Deal 436W

**Lot 86** ***BLACK HAMCO NEW DEAL 407W***

DSH 407W 1507524 March 21, 2009

PRAIRIELANE IDEAL 7451-2014 IDEAL 7451 OF 8103 4465  
**PRAIRIELANE 7451-2014-5004** PRAIRIELANE MAX DUCHESS  
 PRAIRIELANE 4002 BLACK 6037 BANG 2083 PRAIRIELANE 4002  
 PRAIRIELANE 033 BLACK 4047  
 B/R NEW FRONTIER B/R NEW DESIGN 036  
**BLACK HAMCO ERICA 18N** WHITE FENCE PRIDE H1  
 YOUNG DALE ERICA 160L YOUNG DALE MONARCH 12E  
 SHONDRIL BARESS 15S

	BW	WW	YW	Milk	TM
(CAA) EPD	+2.5	+56	+96	+16	+44
WTS	87	763	1369		
ADG	3.53-107	WDA 3.77-105	Age of Dam - 6 years		
CE **	Frame 6.5	WT 1235	Scrotal 35.5 cm		
Carcass	%LMY	REA	%IMF	Rib Fat	Rump Fat
	64.7	14.67	3.96	.23	.24

- \* A very heavily muscled, wide quartered bull with a very thick top.
- \* Dam is one of our top black cows.
- \* Good performance on test & great EPD's.



Lot 86 - Black Hamco New Deal 407W

**Lot 87** **BLACK HAMCO NEW DEAL 413W**

DSH 413W 1507529 March 21, 2009

PRAIRIELANE IDEAL 7451-2014  
**PRAIRIELANE 7451-2014-5004**  
 PRAIRIELANE 4002 BLACK 6037

IDEAL 7451 OF 8103 4465  
 PRAIRIELANE MAX DUCHESS  
 BANG 2083 PRAIRIELANE 4002  
 PRAIRIELANE 033 BLACK 4047  
 HOFF HI FLYER S C 7134  
 SUMMITCREST LASS 229Y  
 PERRYVILLE RAFAEL 34T  
 GLENNIE M'BROOK LASS 7U



Lot 87 - Black Hamco New Deal 413W

	BW	WW	YW	Milk	TM
(CAA) EPD	+1.6	+54	+88	+19	+46
WTS	90	773	1303		
ADG	3.30-102	WDA 3.60-112	Age of Dam - 8 years		
CE **	Frame 6.0	WT 1180	Scrotal 36 cm		
Carcass	%LMY	REA	%IMF	Rib Fat	Rump Fat
	62	15.14	4.24	.35	.38

- \* Another thick topped, wide quartered, moderate framed bull.
- \* Grand dam 32X is a full sister to our high selling bull in our 2002 sale for \$6000 to Black Meadow Farms.
- \* Good carcass data - 15.14 ribeye.
- \* Could use on cows or heifers.

**Lot 88** **BLACK HAMCO NEW DEAL 304W**

DSH 304W 1507456 March 12, 2009

PRAIRIELANE IDEAL 7451-2014  
**PRAIRIELANE 7451-2014-5004**  
 PRAIRIELANE 4002 BLACK 6037

IDEAL 7451 OF 8103 4465  
 PRAIRIELANE MAX DUCHESS  
 BANG 2083 PRAIRIELANE 4002  
 PRAIRIELANE 033 BLACK 4047  
 MINERTS FORTUNE 2000  
 SAF ROYAL LASS 1027  
 GT MAXIMUM  
 YOUNG DALE MIGNOLA 34Y



Lot 88 - Black Hamco New Deal 304W

	BW	WW	YW	Milk	TM
(CAA) EPD	+1.1	+53	+86	+10	+37
WTS	80	712	1277		
ADG	3.45-106	WDA 3.50-109	Age of Dam - 8 years		
CE ***	Frame 5.4	WT 1180	Scrotal 37 cm		
Carcass	%LMY	REA	%IMF	Rib Fat	Rump Fat
	62.2	15.07	5.35	.34	.50

- \* Another typical deep made 5004 son that is built thick throughout.
- \* Dam is an ET Fame daughter that has been a consistent producer.
- \* Well above average on test.
- \* Impressive carcass data - 15.07 ribeye, 5.35% IMF

**REFERENCE SIRE**  
**1 SON SELLS**

**Prairielane Ideal 1008-3025 RC**

Reg # (Cdn) 1161362

S: Prairielane Ideal 1418-8116  
**S: Prairielane Ideal 8116-1008**  
 Prairielane 6060 Duchess 9150

Prairielane Max 3058 6122  
**D: Prairielane 6122 Bandoler 8042**  
 Prairielane 2083 Bandoler 5004

CAA	B.W.	W.W.	Y.W.	Milk	TM
EPD	+3.5	+53	+93	+16	+43

- \* We purchased Ideal 3025 as a 3 year old outcross sire from the Prairielane herd.
- \* This red carrier bull has introduced some Black Angus outcross genetics to our herd.
- \* Outstanding EPD's and pedigree!!

**Lot 89** **BLACK HAMCO RC IDEAL 289W**

DSH 289W 1507444 March 10, 2009

PRAIRIELANE IDEAL 8116-1008  
**PRAIRIELANE IDEAL 1008-3025**  
 PRAIRIELANE 6122 BANDOLER 8042

PRAIRIELANE IDEAL 1418-8116  
 PRAIRIELANE 6060 DUCHESS 9150  
 PRAIRIELANE MAX 3058 6122  
 PRAIRIELANE 2083 BANDOLER 5004

RED LMAN KING ROB 8621  
**RED HAMCO KANNA KING ROB 56K**  
 RED BIEBER KANNA 4026

RED LEACHMAN OBUST 7222  
 RED LEACHMAN ELEANOR  
 RED RAB ABE LINCOLN  
 RED RAB KANNA 535-D

	BW	WW	YW	Milk	TM
(CAA) EPD	+0.8	+33	+69	+15	+32
WTS	82	678	1299		
ADG	4.05-125	WDA 3.54-110	Age of Dam - 9 years		
CE **	Frame 6.3	WT 1200	Scrotal 36 cm		
Carcass	%LMY	REA	%IMF	Rib Fat	Rump Fat
	59.7	14.24	3.28	.41	.36

- \* A Black/Red carrier bull that performed very well on test—3rd overall for ADG & WDA.
- \* The bull is very thick throughout, deep-middle with a wide top.
- \* A power bull that would work on cows or heifers.

**REFERENCE SIRE  
1 SON SELLS**



**NICHOLS EXTRA H6**

Reg # (Cdn) 1507291

Emulation N Bar 5522

Nichols Black Ink D220

S: N Bar Emulation EXT D: Nichols Eileen May F261

N Bar Primrose 2424

Nichols Eileen May B241

CAA	B.W.	W.W.	Y.W.	Milk	TM
EPD	+1.7	+53	+105	+26	+53

- \* One of the best high growth sires in the breed for calving ease & maternal.
- \* Daughters are excellent uddered, deep bodied with excellent dispositions.
- \* His sons are making their mark as some of the top multi-trait standouts.
- \* One of an elite group of sires that combine a +2.5 to +100 spread with .90 accuracy or greater.

**REFERENCE SIRE  
1 SON SELLS**



**SAV Net Worth 4200**

Reg # (Cdn) 1309743

Sitz Traveler 8180

SAF 598 Bando 5175

S: SAV 8180 Traveler 004

D: SAV May 2410

Boyd Forever Lady 8003

SAV May 6269

CAA	B.W.	W.W.	Y.W.	Milk	TM
EPD	+4.8	+59	+112	+32	+62

- \* Performance Powerhouse, record setting SAV herd sire
- \* More body mass, muscle, base width & overall power both phenotypically & genotypically than his sire.



Lot 91 - Black Hamco Extra 44W

**Lot 91 BLACK HAMCO EXTRA 44W**

DSH 44W 1507291 February 3, 2009 (AI)

N BAR EMULATION EXT  
NICHOLS EXTRA H6  
NICHOLS EILEEN MAY F261

EMULATION N BAR 5522  
N BAR PRIMROSE 2424  
NICHOLS BLACK INK D220  
NICHOLS EILEEN MAY B241  
IDEAL 1418 OF 8103 4286  
PRAIRIELANE 033 ROSEBUD  
F A R KRUGERRAND 410H  
BLACK HAMCO CASEY 5G

PRAIRIELANE IDEAL 1418-0051  
BLACK HAMCO LASS 341T  
BLACK HAMCO LASS 62P

	BW	WW	YW	Milk	TM
(CAA) EPD	+1.9	+53	+98	+19	+46
WTS	76	651	1171		
ADG	3.48-108	WDA 2.94-91	Age of Dam - 2 years		
CE ***	Frame 5.4	WT 1100	Scrotal 35.5 cm		
Carcass	%LMY	REA	%IMF	Rib Fat	Rump Fat
	62	12.05	5.32	.25	.45

- \* Extra 44W is a very deep made bull that is very correct in his structure.
- \* This Ideal 0051 heifer did a nice job on her first calf.
- \* Very good EPD's & good performance on test.
- \* Use with confidence on heifers.

**Lot 90 BLACK HAMCO NET WORTH 92W**

DSH 92W 1507319 February 12, 2009 (AI)

SAV 8180 TRAVELER 004  
SAV NET WORTH 4200  
SAV MAY 2410

SITZ TRAVELER 8180  
BOYD FOREVER LADY 8003  
SAF 598 BANDO 5175  
SAV MAY 6269

STEVENSON BRUNO 561G  
BLACK HAMCO LASS 39N

STEVENSON ROYCE 741C  
JRS ENCHANTRESS 16A  
SUMMITCREST HI FLYER 83L  
GLENNIE M' BROOK LASS 32X

	BW	WW	YW	Milk	TM
(CAA) EPD	+2.0	+52	+91	+26	+52
WTS	81	689	1206		
ADG	3.30-102	WDA 3.29-102	Age of Dam - 6 years		
CE **	Frame 5.7	WT 1200	Scrotal 39 cm		
Carcass	%LMY	REA	%IMF	Rib Fat	Rump Fat
	61.2	13.58	3.69	.33	.28

- \* A very well bred Net Worth son that is built just like his famous sire - very deep ribbed, wide topped & thick throughout.
- \* Dam Lass 39N is a standout cow & out of a very good cow family.
- \* Good performance on test & very good EPD's.



Lot 90 - Black Hamco Net Worth 92W

**REFERENCE SIRE  
3 SONS SELL**

**SUMMITCREST HI FLYER 3B18**

Reg # (Cdn) 925250

Scotch Cap  
S: **Hoff Hi Flyer S C 7134** D: **Nichols Eileen May F261**  
Hoff Miss Spade OF S C 147 Nichols Eileen May B241

CAA	B.W.	W.W.	Y.W.	Milk	TM
EPD	-0.2	+47	+85	+25	+53

- \* Super birth to yearling spread with excellent carcass & scrotal EPD's.
- \* Progeny are attractive patterned with added growth & frame size.
- \* Rock solid accuracy across the board.



**Lot 92** **BLACK HAMCO HI FLYER 74W**

DSH 74W 1507311 February 8, 2009 (AD) (Twin)

HOFF HI FLYER S C 7134 SCOTCH CAP  
SUMMITCREST HI FLYER 3B18 HOFF MISS SPADE OF S C 147  
SUMMITCREST LASS 229Y Q A S TRAVELER 23-4  
PRAIRIELANE IDEAL 1418-0051 SUMMITCREST LASS 044W  
IDEAL 1418 OF 8103 4286  
**BLACK HAMCO TIBBIE 411T** PRAIRIELANE 033 ROSEBUD  
BLACK HAMCO TIBBIE TRIUMPH 34K HOFF TRIUMPH S C 927  
MVF TIBBIE 64C

	BW	WW	YW	Milk	TM
(CAA) EPD	+1.6	+53	+91	+22	+48
WTS	75	699	1228		
ADG 3.21-99	WDA 3.12-97	Age of Dam - 2 years			
CE ***	Frame 5.9	WT 1150	Scrotal 36 cm		
Carcass	%LMY	REA	%IMF	Rib Fat	Rump Fat
	65.3	13.52	3.94	.17	.27

- \* A long bodied bull with a wide muscular hip & a desirable Angus head.
- \* Dam is a Ideal 0051 heifer out of Tibbie cow family.
- \* Good calving ease pedigree & EPD's.



Lot 92 - Black Hamco Hi Flyer 74W

**Lot 93** **BLACK HAMCO HI FLYER 75W**

DSH 75W 1507312 February 8, 2009 (AD) (Twin)

HOFF HI FLYER S C 7134 SCOTCH CAP  
SUMMITCREST HI FLYER 3B18 HOFF MISS SPADE OF S C 147  
SUMMITCREST LASS 229Y Q A S TRAVELER 23-4  
PRAIRIELANE IDEAL 1418-0051 SUMMITCREST LASS 044W  
IDEAL 1418 OF 8103 4286  
**BLACK HAMCO TIBBIE 411T** PRAIRIELANE 033 ROSEBUD 4034  
BLACK HAMCO TIBBIE TRIUMPH 34K HOFF TRIUMPH S C 927  
MVF TIBBIE 64C

	BW	WW	YW	Milk	TM
(CAA) EPD	+1.6	+53	+91	+22	+48
WTS	63	715	1209		
ADG 3.00-91	WDA 3.09-96	Age of Dam - 2 years			
CE ***	Frame 5.4	WT 1140	Scrotal 35 cm		
Carcass	%LMY	REA	%IMF	Rib Fat	Rump Fat
	60.6	11.22	3.88	.28	.26

- \* Hi Flyer 75W is a twin brother to 74W & is stamped the same way - correct made with very desirable muscle thickness.
- \* Use either of these bulls with confidence on heifers.

**Lot 94** **BLACK HAMCO HI FLYER 52W**

DSH 52W 1507296 February 4, 2009 (AI)

HOFF HI FLYER S C 7134 SCOTCH CAP  
SUMMITCREST HI FLYER 3B18 HOFF MISS SPADE OF S C 147  
SUMMITCREST LASS 229Y Q A S TRAVELER 23-4  
PRAIRIELANE IDEAL 1418-0051 SUMMITCREST LASS 044W  
IDEAL 1418 OF 8103 4286  
**BLACK HAMCO IDEAL 168T** PRAIRIELANE 033 ROSEBUD 4034  
BLACK HAMCO LASS 39N STEVENSON BRUNO 561G  
BLACK HAMCO MISS HI FLYER 83L

	BW	WW	YW	Milk	TM
(CAA) EPD	+1.8	+52	+87	+24	+50
WTS	80	704	1185		
ADG 3.03-93	WDA 3.02-94	Age of Dam - 2 years			
CE ***	Frame 5.9	WT 1125	Scrotal 35.5 cm		
Carcass	%LMY	REA	%IMF	Rib Fat	Rump Fat
	60.5	13.97	4.33	.37	.36

- \* A long made bull with a very desirable muscle pattern.
- \* Dam is a young Ideal 0051 daughter that did a great job on her first calf.
- \* Use this bull with confidence on heifers.

**REFERENCE SIRE  
2 SONS SELL**



**Bon View Bando 598**

Reg # (Cdn) 780142

Band 234 of Ideal 3163      Voltage HK K142  
S: **Tehama Bando 155**      D: **Bon View Dora 56**  
Tehama Blackcap G373      Bon View Dora 254

CAA	<b>B.W.</b>	<b>W.W.</b>	<b>Y.W.</b>	<b>Milk</b>	<b>TM</b>
EPD	+0.8	+41	+77	+23	+44

- \* A Black Angus foundation bull that has had a major impact on the breed as he is in countless pedigrees & many of the top AI sires.
- \* Tremendous maternal genetics.
- \* Semen is rare & very valuable.

**Lot 95    BLACK HAMCO BANDO 175W**

DSH 175W    1533023    February 22, 2009    (AI) (ET)

TEHAMA BANDO 155	BAND 234 OF IDEAL 3163
BON VIEW BANDO 598	TEHAMA BLACKCAP G373
BON VIEW DORA 254	VOLTAGE HK K142
	BON VIEW DORA 254
ASCENT DARK RITO 151	HILMES DARK RITO OF 3806
AVALAWN EBLINETTE 14'93	BLACKBIRD OF S V F 9760
AVALAWN EBLINETTE 3'91	MANHATTAN OF INDIAN CREEK
	AVALAWN EBLINETTE 7'84

	BW	WW	YW	Milk	TM
(CAA) EPD	+3.6	+37	+62	+20	+39
WTS	88	668	1271		
ADG	3.55-110	WDA 3.44-107	Age of Recipient - 5 years		
CE **	Frame 7.0	WT 1220	Scrotal 35 cm		
Carcass	%LMY	REA	%IMF	Rib Fat	Rump Fat
	64.6	15.45	5.18	.26	.24



Lot 95 - Black Hamco Bando 175W

- \* We are offering something very special this year - 2 direct ET sons of the breed legend **Bon View Bando 598**.
- \* **Bando 175W** is a larger framed, long bodied bull with a muscular hindquarter.
- \* **Dam** is a picture perfect donor cow that is a genetic outcross.
- \* **Bando 598** is one of the most influential Angus sires in the last 20 years & became increasingly popular as his progeny excelled.
- \* Very good carcass data - 15.45 ribeye, %LMY 64.6, %IMF 5.18
- \* Very good performance on test (tied 11th overall)

**Lot 96    BLACK HAMCO BANDO 201W**

DSH 201W    1533021    February 27, 2009    (AI) (ET)

TEHAMA BANDO 155	BAND 234 OF IDEAL 3163
BON VIEW BANDO 598	TEHAMA BLACKCAP G373
BON VIEW DORA 254	VOLTAGE HK K142
	BON VIEW DORA 254
GT MAXIMUM	SCOTCH CAP
KYNLEM MINNI 64C	GT MISS TRAVELER 58
KBJ ROUND MINNI 121S	DF EXPECTATION 42N
	WICKLOW MISS MINNI MCHENRY 19L

	BW	WW	YW	Milk	TM
(CAA) EPD	+2.6	+36	+66	+16	+34
WTS	90	603	1155		
ADG	3.79-117	WDA 3.13-97	Age of Recipient - 9 years		
CE ***	Frame 6.2	WT 1095	Scrotal 34.5 cm		
Carcass	%LMY	REA	%IMF	Rib Fat	Rump Fat
	62.7	13.82	4.32	.28	.30



Lot 96 - Black Hamco Bando 201W

- \* A correct made, long bodied bull with a muscular hindquarter.
- \* **Minni 64C** was a moderate framed, perfect uddered cow that was very fertile.
- \* Performed very well on test - 9th for ADG.
- \* This bull has a pedigree loaded with strong maternal genetics.
- \* Could be used on cows or heifers.

**REFERENCE SIRE  
2 SONS SELL**

**Peak Dot Predominant 715S**

Reg # (Cdn) 1364732

SAV 8180 Traveler 004      SAR New Trend 4100 2080  
S: SAV 004 Predominant 4438    D: Lady of Peak Dot 923P  
SAV Emblynnette 1182      Lady of Peak Dot 520E

CAA	B.W.	W.W.	Y.W.	Milk	TM
EPD	+2.4	+52	+83	+21	+47

- \* Our pick of the Predominant sons from Peak Dot.
- \* A moderate framed, very well muscled bull that worked well on heifers.
- \* Will have a lot more calves out of him this year.



SAV 004 Predominant 4438

**Lot 97    BLACK HAMCO PREDOMINANT 183W**

DSH 183W    1507377    February 24, 2009

SAV 004 PREDOMINANT 4438      SAV 8180 TRAVELER 004  
**PEAK DOT PREDOMINANT 715S**      SAV EMBLYNETTE 1182  
LADY OF PEAK DOT 923P      SAR NEW TREND 4100 2080  
PRAIRIELANE IDEAL 1418-0051      LADY OF PEAK DOT 520E  
**BLACK HAMCO PRINCESS 463T**      IDEAL 1418 OF 8103 4286  
BLACK HAMCO MISS PRINCESS 17L      PRAIRIELANE 033 ROSEBUD 4034  
YOUNG DALE BLACK PRINCE 3G  
BLACK HAMCO MISS NONE BETTER

	BW	WW	YW	Milk	TM
(CAA) EPD	+2.9	+63	+99	+24	+56
WTS	81	798	1290		
ADG	3.35-103	WDA	3.34-104	Age of Dam - 2 years	
CE ***	Frame 5.2	WT	1180	Scrotal 36.5 cm	
Carcass	%LMY	REA	%IMF	Rib Fat	Rump Fat
	61.3	14.38	3.37	.35	.34

- \* A long bodied, very correct made bull that performed well on test.
- \* Dam is a good young Ideal 0051 daughter out of our strong Princess cow family.
- \* A heifer bull with added performance & strong maternal genetics.

**Lot 98    BLACK HAMCO PREDOMINANT 215W**

DSH 215W    1516193    March 1, 2009

SAV 004 PREDOMINANT 4438      SAV 8180 TRAVELER 004  
**PEAK DOT PREDOMINANT 715S**      SAV EMBLYNETTE 1182  
LADY OF PEAK DOT 923P      SAR NEW TREND 4100 2080  
BABA BATTLE CRY 4P      LADY OF PEAK DOT 520E  
**BLACK HAMCO ERICA 211T**      OGL BATTLE CRY 427 128  
BLACK HAMCO BARESS 296R      BROOKMORE DAISY 117E  
PRAIRIELANE IDEAL 1418-0051  
YOUNG DALE ERICA 160L

	BW	WW	YW	Milk	TM
(CAA) EPD	+4.9	+56	+94	+21	+49
WTS	81	775	1302		
ADG	3.39-105	WDA	3.36-104	Age of Dam - 2 years	
CE *	Frame 6.2	WT	1170	Scrotal 36 cm	
Carcass	%LMY	REA	%IMF	Rib Fat	Rump Fat
	59.6	12.57	3.49	.36	.33

- \* Like his sire, 215W is a very correct made with a very desirable muscle pattern.
- \* Dam did a nice job on her first calf.
- \* Good performance on test.



Lot 97  
Black Hamco  
Predominant 183W

**REFERENCE SIRE  
1 SON SELLS**

**TC Advantage**

Reg # (Cdn) 1507373

C H Stacker 7040  
S: **Krugerrand of Donamere 490**  
Donamere Bachel Beauty 288

QAS Traveler 23-4  
D: **TC Pride 2010**  
TC Pride 0011

CAA	B.W.	W.W.	Y.W.	Milk	TM
EPD	-1.1	+38	+79	+27	+46

- \* Kruggerand's #1 light birth weight son.
- \* No doubt calving ease.
- \* High production/light birth weight dam.
- \* Sires good temperament in his offspring.



**Lot 99 BLACK HAMCO ADVANTAGE 179W**

DSH 179W 1507373 February 24, 2009 (AI)

KRUGERRAND OF DONAMERE 490 C H STACKER 7040  
TC ADVANTAGE DONAMERE BACHEL BEAUTY  
TC PRIDE 2010 QAS TRAVELER 23-4  
TC PRIDE 0011

SUMMITCREST HI FLYER 3B 18 HOFF HI FLYER S C 7134  
BLACK HAMCO MISS HI FLYER 83L SUMMITCREST LASS 229Y  
GLENNIE M'BROOK LASS 32X PERRYVILLE RAFAEL 34T  
GLENNIE M'BROOK LASS 7U

	BW	WW	YW	Milk	TM
(CAA) EPD	+0.4	+37	+66	+24	+43
WTS	85	665	1160		
ADG 3.07-95	WDA 3.17-99	Age of Dam - 8 years			
CE ***	Frame 6.2	WT 1120	Scrotal 38 cm		
Carcass	%LMY	REA	%IMF	Rib Fat	Rump Fat
	64.2	13.37	4.69	.21	.29



Lot 99 - Black Hamco Advantage 179W

- \* A long bodied, correct made bull with a very desirable muscle pattern.
- \* TC Advantage is an older, very proven bull, whose semen is no longer available & is valuable.
- \* Dam 83L is one of our best cows & a CAA Elite cow
- \* 83L is a full sister to our 2002 high selling bull for \$6000.
- \* This bull would work well on heifers.



## 2 YEAR OLD RED & BLACK ANGUS BULLS

### REFERENCE SIRE 1 SONS SELLS

#### Red BJR Make My Day 981

Reg # (US) 411482 (CDN) 846590

BJR Hi Roller 211  
S: **BJR Easy Rider 781** D: **BJR Tow Kana 117-710**  
BJR Dipy Do 355-809 BJR Towkana 355-71L

CAA	B.W.	W.W.	Y.W.	Milk	TM
EPD	-2.5	+30	+63	+22	+37

- \* The top selling calving ease sire of the Red Angus breed.
- \* Combines calving ease, growth, maternal & carcass traits in one package.
- \* In the top 10% of the breed for BW, YW
- \* Marbling King!
- \* Daughters have great udders, volume & depth of body.



### Lot 203 RED HAMCO MAKE MY DAY 138U

DSH 138U 1449613 February 11, 2008 (AI)

RED BJR EASY RIDER 781	BJR HI ROLLER 211
<b>RED BJR MAKE MY DAY 981</b>	RED BJR DIPY DO 355-809
RED BJR TOW KANA 117-710	BJR FIRE-MAN 0150
RED BASIN SENSATION 702S	RED BJR TOWKANA355-71L
<b>RED HAMCO CHIC SENSATION 29L</b>	GARDENS SENSATION 039 S1
RED BIEBER CHIC 4295	STEVENSON ELEMRENE 538C
	RED RAB ABE LINCOLN
	RED BIEBER CHIC 1919

	BW	WW	YW	Milk	TM	
(CAA) EPD	-1.1	+26	+56	+13	+26	CE ***
WTS	80	Frame	5.0	Wt 1565	Scrotal	40 cm

- \* A smaller framed, compact made, heavily muscled bull with a lot of capacity.
- \* His dam 29L is a CAA Elite cow & ET daughter of Sensation & Chic
- \* Great calving ease bull that will calve easy & add muscle to his calves.

### REFERENCE SIRE 5 SONS SELL

#### Red Hamco Mr. Sol Trend 96L

Reg # (Cdn) 1080223

SSS Black Trend 13B JKG Chiefton L303  
S: **Red Brylor New Trend 22D** D: **Red Bieber Sallee 3300**  
Red Meadow CK Seaman 31A Red Bieber 1529-1266-1149

CAA	B.W.	W.W.	Y.W.	Milk	TM
EPD	+7.2	+60	+99	+16	+46

- \* 96L is sired by one of the most popular Red Angus bulls 'New Trend'
- \* 96L was sold in our 2002 sale & we liked him so much that we bought him back in 2005.
- \* His dam Sallee 3300 was a large framed, deep ribbed, dark red power cow we purchased from the Bieber mature cow dispersal.
- \* 97L a full ET brother was used in our herd for a number of years & produced some great progeny for us.
- \* Many full siblings have been sold out of this combination.
- \* Look at his numbers!!

### Lot 204 RED HAMCO SOL 227U

DSH 227U 1449666 February 22, 2008

RED BRYLOR NEW TREND 22D	SSS BLACK TREND 13B
<b>RED HAMCO MR SOL TREND 96L</b>	RED MEADOW CK MISS SEAMAN
RED BIEBER SALLEE 3300	JKG CHIEFTON L303
RED PIE DEEP CANYON 908	RED BIEBER 1529-1266-1149
<b>RED HAMCO DIANN 30M</b>	RED BUF CRK CHF 824-1658
RED HAMCO DIANN MARIAS 36J	RED PIE BOTEET LOGAN 739
	RED GLACIER MARIAS 548
	RED BIEBER DIANN 3371

	BW	WW	YW	Milk	TM	
(CAA) EPD	+3.0	+39	+71	+18	+37	CE *
WTS	105	Frame	5.6	Wt 1855	Scrotal	42 cm

- \* Sol 227U is a dark featured, deep sided, moderate framed bull.
- \* Sol Trend 96L stamps all his progeny the same, & you would like a whole pen of them.



Lot 204  
Red Hamco Sol 227U

**Lot 205** **RED HAMCO SOL 249U**  
 DSH 249U 1449666 February 25, 2008

RED BRYLOR NEW TREND 22D SSS BLACK TREND 13B  
**RED HAMCO MR SOL TREND 96L** RED MEADOW CK MISS SEAMAN  
 RED BIEBER SALLEE 3300 JKG CHIEFTON L303  
 RED KINARED BOARDWALK 881K RED BIEBER 1529-1266-1149  
**RED HAMCO SUSIE 278P** RED TKP BODACIOUS 693  
 RED HAMCO SUSIE MISS DAY 70L RED SCTC GLD EDGE 2E  
 RED BJR MAKE MY DAY 981  
 RED BIEBER SUSIE 3923

	BW	WW	YW	Milk	TM	
(CAA) EPD	+5.6	+53	+96	+17	+43	CE *
WTS	101	Frame 5.6	Wt 1880	Scrotal 40.5 cm		

- \* Sol 249U is definitely a top end power bull that is very long & has a desirable muscle pattern.
- \* Dam is a good Boardwalk daughter our of our CAA Elite cow 70L.
- \* Recommend to use on cows.



Lot 205 - Red Hamco Sol 249U

**Lot 206** **RED HAMCO SOL 268U**  
 LRH 268U 1449474 February 28, 2008

RED BRYLOR NEW TREND 22D SSS BLACK TREND 13B  
**RED HAMCO MR SOL TREND 96L** RED MEADOW CK MISS SEAMAN  
 RED BIEBER SALLEE 3300 JKG CHIEFTON L303  
 RED BIEBER CLASSIC 6753 RED BIEBER 1529-1266-1149  
**RED LRH 154G MISS CLASSIC 112K** RED BIEBER CLASSIX 4515  
 RED LEADHAM PRILARK 154G RED BIEBER DESIGN 3679  
 RED LEACHMAN HEAVENLY 8141  
 RED LEACHMAN PRILARK 6374

	BW	WW	YW	Milk	TM	
(CAA) EPD	+3.0	+39	+71	+18	+37	CE *
WTS	96	Frame 5.7	Wt 1720	Scrotal 39.5 cm		

- \* Sol 268U is stamped like all the 96L sons - deep ribbed, wide topped with excellent style & muscle pattern.
- \* Dam 112K is a very good cow that always produced well for us.

**Lot 207** **RED HAMCO SOL 448U**  
 DSH 448U 1449818 March 23, 2008

RED BRYLOR NEW TREND 22D SSS BLACK TREND 13B  
**RED HAMCO MR SOL TREND 96L** RED MEADOW CK MISS SEAMAN  
 RED BIEBER SALLEE 3300 JKG CHIEFTON L303  
 RED BJR RAMBLER 5162 RED BIEBER 1529-1266-1149  
**RED HAMCO LAKOTA 51P** RED FCC RAMBO 502  
 RED CUMNOCK LAKOTA 995F BJR GOLDI 355-1122  
 RED CUMNOCK TRADITION 534C  
 RED CUMNOCK LAKOTO 725D

	BW	WW	YW	Milk	TM	
(CAA) EPD	+3.1	+49	+84	+19	+44	CE *
WTS	92	Frame 6.0	Wt 1825	Scrotal 41 cm		

- \* Sol 448U is another typical 96L son - dark red, smooth made, & well muscled.
- \* Dam 51P is an ET Rambler 5162 daughter out of our top Cumnock donor cow.

**Lot 208** **RED HAMCO SOL 543U**  
 DSH 543U 1449874 May 11, 2008

RED BRYLOR NEW TREND 22D SSS BLACK TREND 13B  
**RED HAMCO MR SOL TREND 96L** RED MEADOW CK MISS SEAMAN  
 RED BIEBER SALLEE 3300 JKG CHIEFTON L303  
 RED CUMNOCK STAR 139Z RED BIEBER 1529-1266-1149  
**RED HAMCO TIARA STAR 6G** RED CUMNOCK SCR STAR 753X  
 RED TIARA OF TAG-A-LONG 57T RED CUMNOCK CHETA 566W  
 RED RABCHIEF P1632  
 RED MISS DANA 18M

	BW	WW	YW	Milk	TM	
(CAA) EPD	+1.8	+36	+69	+16	+34	CE **
WTS	81	Frame n/a	Wt 1785	Scrotal 40 cm		

- \* Sol 543U is a very well bred 96L son with depth of rib & extra thickness.
- \* His dam 6G is a full sister to the legendary bull - Rab Star 56C & is an excellent cow that has stood the test of time.
- \* Could be used on cows or heifers.



Lot 208 - Red Hamco Sol 543U

**REFERENCE SIRE  
1 SON SELLS**

**RED BRYLOR MASTERPLAN 17M**  
(see page 16)

**Lot 210** **RED HAMCO MASTER 77U**

DSH 77U 1449576 February 1, 2008 (AI)

RED BASIN SENSATION 702E  
**RED BRYLOR MASTER PLAN 17M**  
RED BRYLOR BONITA 66K

GARDENS SENSATION 039 S1  
STEVENSON ELEMRERE 538C  
RED RD DIVIDEND 7F  
RED BRYLOR CHEROK 40X  
RED LCHMN ON TARGET 1016E  
RED BIEBER ELISA 3413  
RED BAAC COUNTDOWN 15D  
RED ANDERSON'S VALENTINE 114B

RED HAMCO ON TARGET 26J  
**RED HAMCO VALENTINE 301M**  
RED ANDERSON'S VALENTINE 63F

	BW	WW	YW	Milk	TM	
(CAA) EPD	+2.1	+33	+65	+11	+28	CE *
WTS	95	Frame 5.8	Wt 1785	Scrotal	38.5 cm	

- \* Master 77U is a dark red, smooth made, moderate framed bull that carries natural thickness.
- \* We purchased a limited semen package on Master Plan when he was a yearling & he has gone on to be a popular & heavily used Bull in the breed.
- \* His dam is a powerful cow that gives him a little extra punch!!!
- \* Balanced numbers throughout.

**REFERENCE SIRE  
1 SON SELLS**

**RED TOWAW INDEED 104H**  
(see page 6)

**Lot 211** **RED HAMCO INDEED 115U**

DSH 115U 1449597 February 6, 2008 (AI)

RED GLACIER DIVIDE 310  
**RED TOWAW INDEED 104H**  
RED TOWAW MOLLY 67C

RED BUF CRK COPPERTP 1665  
RED GLACIER LASS  
RED ARSF BOLD EDITION 2A  
RED TOWAW MOLLY 34R  
RED LEACHMAN ROBUST 722Z  
RED LEACHMAN ELEANOR  
RED ARM RIVER REBEL'S ECLIPSE  
RED GIRVINMERE ROSE 387X

RED LMAN KING ROB 8621  
**RED HAMCO ROSE 100M**  
RED GIRVINMERE ROSE 473D

	BW	WW	YW	Milk	TM	
(CAA) EPD	+2.6	+28	+51	+17	+31	CE *
WTS	99	Frame 6.4	Weight 1730	Scrotal	41 cm	

- \* Indeed 115U is a dark red, long sided bull out of the very popular and now rare Indeed 104H.
- \* This bull has a great maternal pedigree & would sire great replacement heifers.
- \* Many great bulls represented in this pedigree. Dam is a King Rob ET daughter out of our Rose donor cow.

**REFERENCE SIRE  
2 SONS SELL**

**RED LRH MR PRIS ROBBER 67L**  
(see page 32)

**Lot 213** **RED HAMCO GOLDROBBER 554U**

DSH 554U 1501649 May 21, 2008

RED LCHMN GOLD ROBBER 1909E  
**RED LRH MR PRIS ROBBER 67L**  
RED LEADHAM PRILARK 100G

RED LMAN KING ROB 8621  
RED LACHMAN LARKABA 6384  
RED LMAN NONE BETTER 9604  
RED LEACHMAN PRILARK 6374  
RED BJR EASY RIDER 781  
RED BJR TOWKANA 117-710  
JKG CHIEFTON L303  
RED BIEBER 1529-1266

RED BJR MAKE MY DAY 981  
**RED HAMCO SALLEE 702R**  
RED BIEBER SALLEE 3300

	BW	WW	YW	Milk	TM	
(CAA) EPD	-3.3	+29	+63	+20	+34	CE ***
WTS	71	Frame n/a	Wt 1575	Scrotal	39 cm	

- \* A very deep middled, thick made, smaller framed, correct bull.
- \* Dam 702R is an ET daughter out of our great Sallee cow & a full sister to our top herdsire Bullwinkle 153R.



Lot 213  
Red Hamco Goldrobber  
554U

**Lot 212** **RED HAMCO GOLDROBBER 551U**

DSH 551U 1449880 May 18, 2008

RED LCHMN GOLD ROBBER 1909E  
**RED LRH MR PRIS ROBBER 67L**  
RED LEADHAM PRILARK 100G

RED LMAN KING ROB 8621  
RED LACHMAN LARKABA 6384  
RED LMAN NONE BETTER 9604  
RED LEACHMAN PRILARK 6374  
RED LEACHMAN ROBUST 722Z  
RED LEACHMAN ELEANOR  
RED CUMNOCK STAR 139Z  
RED TIARA OF TAG-A-LONG 57T

RED LMAN KING ROB 8621  
**RED HAMCO KR TIARA 154R**  
RED HAMCO TIARA BIG IRON 69K

	BW	WW	YW	Milk	TM	
(CAA) EPD	-1.2	+31	+62	+23	+38	CE ***
WTS	81	Frame n/a	Wt 1725	Scrotal	39 cm	

- \* A correct made, thick made, moderate framed bull with an ideal Angus head.
- \* Dam 154R is a very well bred young cow out of our top end cow—69K.
- \* Use with confidence on heifers.



Lot 212 - Red Hamco Goldrobber 551U

**REFERENCE SIRE  
2 SONS SELL**

**Red Brylor Division 152R**

Reg # (Cdn) 1507373

Red Loosli Divide 523      Red Seaman Chief  
S: **Red Pie Division 7104**      D: **Red Meadow CK Miss Seaman 31A**  
Red Pie Reba 464      Red Meadow CK Princess 10W

CAA	B.W.	W.W.	Y.W.	Milk	TM
EPD	+2.9	+24	+41	+18	+30

- \* Purchased from the strong Brylor program.
- \* His dam is the mother of the breed legend Red Brylor New Trend 22D
- \* Sire is a powerful AI sire.

**Lot 215**      **RED HAMCO DIVISION 545U**

DSH 545U      1449876      May 12, 2008

RED PIE DIVISION 7104      RED LOOSLI DIVIDE 523  
**RED BRYLOR DIVISION 152R**      RED PIE REBA 464  
RED MEADOW CK MISS SEAMAN 31A      RED SEAMAN CHIEF  
RED MEADOW CK PRINCESS  
RED AGH NONE BETTER 3F      RED LMAN NONE BETTER 9604  
**RED AGH ISSIE ROBIN 121J**      RED LCHMN ISABELLE C1075  
RED LEADHAM ISABELLE 501G      RED CUMNOCK STAR 139Z  
RED LCHMN ISABELLE C1075

	BW	WW	YW	Milk	TM
(CAA) EPD	+0.1	+26	+44	+17	+30
WTS	78	Frame	n/a	Wt 1685	Scrotal 40 cm

- \* A deep sided, thick muscled, moderate framed bull.
- \* Dam 121J produced our 5500 high selling Mr. Romance 103R.
- \* She was flushed to New Trend & produced several very good progeny including Iggy 78N used successfully by Gork Farms.

**Lot 216**      **RED HAMCO DIVISION 342U**

DSH 342U      1449742      March 7, 2008

RED PIE DIVISION 7104      RED LOOSLI DIVIDE 523  
**RED BRYLOR DIVISION 152R**      RED PIE REBA 464  
RED MEADOW CK MISS SEAMAN 31A      RED SEAMAN CHIEF  
RED MEADOW CK PRINCESS  
RED TOWAW ENTERPRISE 18M      RED TOWAW INDEED 104H  
**RED HAMCO SALLEE MMP 169P**      RED TOWAW GOLD EDGE 4K  
RED HAMCO SALLEE 61M      RED BJR MAKE MY DAY 981  
RED BIEBER SALLEE 3300

	BW	WW	YW	Milk	TM
(CAA) EPD	+0.1	+25	+40	+18	+30
WTS	82	Frame 5.3	Wt 1715	Scrotal 38 cm	

- \* A very good, deep middled, thick made bull.
- \* Dam is a good uddered, very well bred cow out of the valued Sallee family.
- \* Could be used on cows or heifers.



Lot 215 - Red Hamco Division 545U

**REFERENCE SIRE  
1 SON SELLS**

**RED BRYLOR RSTD HIGH CAPACITY  
(see page 15)**

**Lot 217**      **RED HAMCO HI CAPACITY 12U**

DSH 12U      1449526      January 23, 2008

RED BJR HIGH CAPACITY 008      RED BJR HI HO 916  
**RED BRYLOR RSTD HIGH CAPACITY**      RED JRA JAMES 904  
RED BRYLOR BONITA 36J      RED LEACHMAN EBV 3531  
RED FABULOUS FRONT LINE 315S      RED BRYLOR CHEROK 40X  
**RED TOPLINE PRIDE 615**      RED MEADOW CK 904 52K  
RED TOPLINE PRIDE 1J      RED CRESCENT CREEK ANNIE  
RED VVV A+++ 272D 90Z 22E  
RED MISS TOPLINE 63G

	BW	WW	YW	Milk	TM
(CAA) EPD	-2.4	+25	+51	+19	+31
WTS	79	Frame 5.7	Wt 1875	Scrotal 38.5 cm	

- \* A quiet, dark red, moderate framed bull that is thick made & easy fleshing.
- \* Great calving ease pedigree, sired by the "Bet the Ranch" calving ease bull High Capacity 800M



Lot 216 - Red Hamco Division 342U

**REFERENCE SIRE  
3 SONS SELL**

**RED HAMCO INDEED 145S**  
(see page 34)

**Lot 219** **RED HAMCO INDEED 135U**  
DSH 135U 1449611 February 10, 2008 (AI)

RED TOWAW INDEED 104H RED GLACIER DIVIDE 310  
**RED HAMCO INDEED 145S** RED TOWAW MOLLY 67C  
 RED HAMCO ON TARGET 8H RED TOWAW MOLLY 67C  
 RED LCHMN ON TARGET 1016E  
 RED LCHMN GRAND CANYON 1244G RED BUF CRK CHF 824-1658  
**RED HAMCO DIANN 14L** RED KRN REBA'S ROBIN  
 RED HAMCO DIANN MARIAS 36J RED GLACIER MARIAS 548  
 RED BIEBER DIANN 3371

	BW	WW	YW	Milk	TM	
(CAA) EPD	+3.7	+34	+60	+15	+31	CE *
WTS	94	Frame 5.0	Wt 1640	Scrotal	41	cm

- \* A smaller framed, correct made, well muscled, easy fleshing bull with the great Angus depth of rib.
- \* A bull that should pass on his easy fleshing ability to his offspring.

**Lot 220** **RED HAMCO INDEED 163U**  
DSH 163U 1449627 February 14, 2008 (AI)

RED TOWAW INDEED 104H RED GLACIER DIVIDE 310  
**RED HAMCO INDEED 145S** RED TOWAW MOLLY 67C  
 RED HAMCO ON TARGET 8H RED TOWAW MOLLY 67C  
 RED LCHMN ON TARGET 1016E  
 RED MAC FORE 69H RED MAC FORTUNE 54F  
**RED HAMCO ANGEL 220R** MAC MISS PATHY 24A  
 RED HAMCO MISS MARCIE 4L RED SSS HIGH MARK 272D  
 RED ANGEL OF TAG-A-LONG 93J

	BW	WW	YW	Milk	TM	
(CAA) EPD	+0.5	+22	+41	+20	+31	CE **
WTS	92	Frame 5.5	Wt 1710	Scrotal	39	cm

- \* Indeed 163U is also stamped like his sire - a showy, dark red, deep sided bull.
- \* A moderate framed bull with good EPD's.
- \* Recommend to use on cows.

**REFERENCE SIRE  
1 SON SELLS**

**RED MLK CRK CUB 722**  
(see page 19)



**Lot 218** **RED HAMCO INDEED 120U**  
DSH 120U 1449601 February 7, 2008 (AI)

RED TOWAW INDEED 104H RED GLACIER DIVIDE 310  
**RED HAMCO INDEED 145S** RED TOWAW MOLLY 67C  
 RED HAMCO ON TARGET 8H RED TOWAW MOLLY 67C  
 RED LCHMN ON TARGET 1016E  
 RED KINARED BOARDWALK 881K RED TKP BODACIOUS 693  
**RED HAMCO MIMI 143P** RED SCTC GOLD EDGE 2E  
 RED HAMCO MIMI ON TARGET 42K RED LCHMN ON TARGET 1016E  
 RED BIEBER MIMI 3418

	BW	WW	YW	Milk	TM	
(CAA) EPD	+3.0	+32	+59	+15	+31	CE *
WTS	92	Frame 5.9	Wt 1850	Scrotal	39	cm

- \* Indeed 120U looks a lot like his sire - dark red, long sided, correct made bull that moves well.
- \* His dam is a valued, young Boardwalk cow out of our Mimi cow family.



Lot 219 - Red Hamco Indeed 135U

**Lot 221** **RED HAMCO CUB 172U**

DSH 172U 1449634 February 15, 2008 (AI)

RED GLACIER CUB 446 GLACIER GRIZ 146  
**RED MLK CRK CUB 722** GLACIER FRITZ 241  
 RED MLK CRK LAKOTA 152-HOBO RED BUF CRK HOBO 1961  
 RED MANITOBA EXPLOSION 60J RED MLK CRK LAKOTA 802-RAMB  
**RED HAMCO JESSICA 98N** RED LMAN ROBIN HOOD 1174B  
 RED HAMCO JESS IMPACT 44L RED BIEBER MIMI 3418  
 RED BIEBER IMPACT 4399  
 RED LNG JESSI 832

	BW	WW	YW	Milk	TM	
(CAA) EPD	+0.7	+33	+52	+17	+33	CE ***
WTS	89	Frame 5.3	Wt 1645	Scrotal	38	cm

- \* A smaller framed typical Cub son with a very desirable muscle pattern & correct made.
- \* A very well bred bull out of our Jessi cow family with many good bulls in his pedigree.
- \* Grand dam 44L is a CAA Elite cow.
- \* Use with confidence on heifers.

**REFERENCE SIRE  
5 SONS SELL**

**RED HAMCO BULLWINKLE 153R  
(see page 31)**

**Lot 223** **RED HAMCO BULLWINKLE 355U**

DSH 355U 1449752 March 8, 2008

RED BJR MAKE MY DAY 981	RED BJR EASY RIDER 781
RED HAMCO BULLWINKLE 153R	RED BJR TOW KANA 117-710
RED BIEBER SALLEE 3300	JKG CHIEFTON L303
	RED BIEBER1529-1266-1149
RED MLK CRK CUB 722	RED GLACIER CUB 446
RED HAMCO LILY 12P	RED MLK CRK LAKOTA 152-HOBO
RED HAMCO EUCLA 46M	RED SSS HIGH MARK 272D
	RED BIEBER EUCLA 3452

	BW	WW	YW	Milk	TM	
(CAA) EPD	+2.8	+41	+78	+12	+33	CE *
WTS	96	Frame	5.8	Wt 1865	Scrotal	44 cm

- \* Bullwinkle 355U is stamped by his sire - smooth made, dark red, well muscled bull with a good wide hip.
- \* Many good bulls present in this bull's pedigree.
- \* Good performance EPD's on this bull.
- \* Recommended for cows.

**Lot 224** **RED HAMCO ROCKY 210U**

DSH 210U 1449657 February 20, 2008

RED BJR MAKE MY DAY 981	RED BJR EASY RIDER 781
RED HAMCO BULLWINKLE 153R	RED BJR TOW KANA 117-710
RED BIEBER SALLEE 3300	JKG CHIEFTON L303
	RED BIEBER1529-1266-1149
RED BIEBER CLASSIC 6753	RED BIEBER CLASSIC 4515
RED HAMCO BLOXY CLASSIC 127K	RED BIEBER DESIGN 3679
RED BLOXY OFKINARED 455F	RED LEACHMAN SAFE BET 1057C
	RED LEACHMAN BLOXY 6381

	BW	WW	YW	Milk	TM	
(CAA) EPD	+1.3	+31	+66	+11	+26	CE *
WTS	88	Frame	5.6	Wt 1730	Scrotal	40 cm

- \* Rocky is a top end bull that is a dark red, thick, deep made bull with extra style.
- \* His sire 153R has done an exceptional job in our herd. His dam is out of the Bloxy cow family & is a good cow.

**Lot 225** **RED HAMCO BULLWINKLE 511U**

DSH 511U 1449859 April 14, 2008

RED BJR MAKE MY DAY 981	RED BJR EASY RIDER 781
RED HAMCO BULLWINKLE 153R	RED BJR TOW KANA 117-710
RED BIEBER SALLEE 3300	JKG CHIEFTON L303
	RED BIEBER1529-1266-1149
RED LCC PORTHOS 1408J	RED LMAN ROBIN HOOD 1174B
RED CIRCLE C MISSY 57L	RED LEACHMAN DINA C1001
RED CIRCLE C DAISY 13E	RED CUMNOCK STAR 139Z
	RED CIRCLE C ECLIPSE 4C

	BW	WW	YW	Milk	TM	
(CAA) EPD	-0.1	+34	+71	+14	+31	CE **
WTS	78	Frame	n/a	Wt 1805	Scrotal	42.5 cm

- \* A deep sided, moderate framed bull with a lot of style.
- \* Dam 57L is definitely one of our top producing cow whose progeny have sold very well.
- \* Impressive EPD's & could be used on heifers or cows.

**Lot 222** **RED HAMCO BULLWINKLE 400U**

DSH 400U 1449789 March 12, 2008 Twin

RED BJR MAKE MY DAY 981	RED BJR EASY RIDER 781
RED HAMCO BULLWINKLE 153R	RED BJR TOW KANA 117-710
RED BIEBER SALLEE 3300	JKG CHIEFTON L303
	RED BIEBER1529-1266-1149
RED BRYLOR GOLD 55H	RED 77 PATCH 0 GOLD 641P
RED LRH PRILARK GOLD 98M	RED IRENE 36E
RED LEADHAM PRILARK 100G	RED LMAN NONE BETTER 9604
	RED LEACHMAN PRILARK 6374

	BW	WW	YW	Milk	TM	
(CAA) EPD	+3.9	+43	+84	+16	+37	CE *
WTS	82	Frame	6.4	Wt 1980	Scrotal	43 cm

- \* 400U is another Bullwinkle 153R son that is stamped the same way.
- \* A powerful, deep ribbed bull that is correct in his structure with added thickness.
- \* His dam 98M is out of our top Prilark cow family. She has done an exceptional job.
- \* 400U is a twin.
- \* Use this bull on cows for some added performance



Lot 224 - Red Hamco Rocky 210U



Lot 225 - Red Hamco Bullwinkle 511U

**Lot 226** **RED HAMCO BULLWINKLE 560U**

DSH 560U 1501646 May 30, 2008

RED BJR MAKE MY DAY 981  
**RED HAMCO BULLWINKLE 153R**  
 RED BIEBER SALLEE 3300

RED BAR M SIENA'S ROBIN 48F  
**RED HAMCO ROBIN ESIA 166J**  
 RED BIEBER ESIA 4254

RED BJR EASY RIDER 781  
 RED BJR TOW KANA 117-710  
 JKG CHIEFTON L303  
 RED BIEBER1529-1266-1149

RED LMAN ROBIN HOOD 1174B  
 RED GIRVNMERE ROSE 473D  
 RED BIEBER LUCAS 2846  
 RED BIEBER ESIA 2810

	BW	WW	YW	Milk	TM	
(CAA) EPD	+3.5	+40	+76	+10	+30	CE *
WTS	78	Frame n/a	Wt 1605	Scrotal	41 cm	

- \* A dark featured, deep sided bull that has impressive EPD's
- \* Dam is a CAA Elite cow out of our strong Bieber Esia family.
- \* This bull should add extra performance to his progeny.

**REFERENCE SIRE**  
**1 SON SELLS****RED GLACIER LOGAN**  
(see page 14)**Lot 228** **RED HAMCO LOGAN 221U**

LRH 221U 1449471 February 21, 2008 (AI)

RED BUFFALO CREEK VC CHIEF  
**RED GLACIER LOGAN**  
 RED GLACIER REBALAS

RED HOLDEN HI HO 753  
**RED LEADHAM HI HO 50L**  
 RED LEADHAM CARMELLA 45G

OK DOUBLE CHIEF 4430  
 MD MADCAP RC 237  
 RED CREEK SIDE COPPER  
 GLACIER HI-RB-LS  
 RED HOLDEN HI HO 574  
 RED BIEBER MIMI 4151  
 RED LCHMN DON JUAN 1502E  
 RED CIRCLE C CARMELLA 24E

	BW	WW	YW	Milk	TM	
(CAA) EPD	-0.7	+28	+44	+21	+35	CE ***
WTS	86	Frame 5.8	Wt 1780	Scrotal	38.5 cm	

- \* Logan 221U is a densely made, compact bull, that is thick.
- \* Logan is a older bull that continues to be popular because his progeny are so good,
- \* His dam 50L has been a very consistent producer for us.
- \* Could be used on heifers.

**REFERENCE SIRE**  
**2 SONS SELL****Red Mac Fore 69H**

Reg # (Cdn) 919836

Red T3 Chief 2887  
**S: Red Mac Fortune 54F**  
 Red Romar Serebelga 3Z

Red Three D Pathfinder 22'86  
**D: Red Mac Miss Pathy 24A**  
 Black Mac Miss Atlas 8U

CAA	B.W.	W.W.	Y.W.	Milk	TM
EPD	+5.6	+48	+90	+8	+32

- \* Third high selling bull at the 99 Mackenzie Brothers Bull Sale at \$9500.
- \* He is a deep sided, heavy muscled hulk of a bull that was a top performer on test.
- \* Fore 69H sired a \$6000 son in the MacKenzie 2001 sale.
- \* We have been very impressed with the Mac Fore 69H's sons & daughters
- \* He sires performance, great hair, & calves with eye appeal.
- \* He bred in our herd till he was 10 years old.
- \* Certainly one of the highest performance EPD's of any Red Angus Bull in Canada or the US +48 WW, +90 YW !!!

**REFERENCE SIRE**  
**1 SON SELLS****Prairielane Ideal 1008-3025 RC**  
(see page 23)**Lot 227** **RED HAMCO IDEAL 578U**

DSH 578U 1501648 July 2, 2008 Twin

PRAIRIELANE IDEAL 8116-1008  
**PRAIRIELANE IDEAL 1008-3025**  
 PRAIRIELANE 6122 BANDOLER 8042

PRAIRIELANE IDEAL 1418-8116  
 PRAIRIELANE 6060 DUCHESS 9150  
 PRAIRIELANE MAX 3058 6122  
 PRAIRIELANE 2083 BANDOLER 5004  
 RED LMAN ROBIN HOOD 1174B  
 RED BIEBER DAPHINE 3346  
 RED BJR YOD 407  
 RED BIEBER INDIGO 2487

RED BIEBER RED MOON 6042  
**RED HAMCO MISS MOON 166L**  
 RED BIEBER INDIGO 4866

	BW	WW	YW	Milk	TM	
(CAA) EPD	+1.9	+40	+70	+13	+33	CE **
WTS	73	Frame n/a	Wt 1585	Scrotal	38 cm	

- \* A moderate framed, deep ribbed bull with balanced numbers.
- \* His dam 166L is a very good cow out of our Indigo 4866 donor cow.
- \* This bull would work well on cows or heifers.

**REFERENCE SIRE**  
**1 SONS SELL****RED GLACIER NYACK 688**  
(see page 33)**Lot 229** **RED HAMCO NYACK 481U**

DSH 481U 1449841 March 30, 2009

RED BJR RAMBLER 5162  
**RED GLACIER NYACK 688**  
 RED GLACIER RB-LS

RED BAR M GOLD 53J  
**RED HAMCO GOLDEN MARIE 288L**  
 RED BAR M MARIE 18J

RED FCC RAMBO 502  
 BJR GOLDI 355-1122  
 RED BUFFALO CREEK VC CHIEF 105  
 GLACIER HI-RB-LS  
 RED HOWE MR LEADER 138F  
 RED HOWE MS MABEL DDH 82E  
 RED F BAR BIG WHEEL 13E  
 RED DEER RANGE MARIE 126E

	BW	WW	YW	Milk	TM	
(CAA) EPD	+1.9	+34	+56	+19	+37	CE *
WTS	99	Frame 5.6	Wt 1755	Scrotal	37.5 cm	

- \* 481U is a typical Nyack son - moderate framed with a wide top & a square muscular hip.
- \* Dam 288L is a CAA Elite cow & always brings in a top calf.
- \* A well bred bull that looks the part & a balanced set of EPD's.

**Lot 231** **RED HAMCO MAC FORE 439U**

DSH 439U 1449811 March 20, 2008

RED MAC FORTUNE 54F  
**RED MAC FORE 69H**  
 MAC MISS PATHY 24A

RED LADIES MAN 1144B  
**RED HAMCO ROBIN LADIES MAN 49H**  
 RED BAR M SIENA'S ROBIN 44F

RED T3 CHIEF 2887  
 RED ROMAR SEREBELGA 3Z  
 RED THREE D PATHFINDER 22'86  
 BLACK MAC MISS ATLAS 8U  
 RED LEACHMAN RED TOP 8658  
 LEACHMAN RD RSE 7016  
 RED LMAN ROBIN HOOD 1174B  
 RED GIRVNMERE ROSE 473D

	BW	WW	YW	Milk	TM	
(CAA) EPD	+2.9	+39	+62	+7	+26	CE *
WTS	90	Frame 6.5	Wt 1750	Scrotal	38 cm	

- \* Mac Fore 439U is a thick made 69H with balanced EPD's.
- \* Dam 49H is a very proven ET cow out of our foundation Red Angus cow Robin 44F.

**Lot 232** **RED HAMCO BIG MAC 302U**

LRH 302U 1449479 March 4, 2008

RED MAC FORTUNE 54F  
**RED MAC FORE 69H**  
 MAC MISS PATHY 24A

RED HAMCO ON TARGET 26J  
**RED LRH MISS PRIS TARGET 226L**  
 RED LRH ISSIE BIG IRON 1H

RED T3 CHIEF 2887  
 RED ROMAR SEREBELGA 3Z  
 RED THREE D PATHFINDER 22'86  
 BLACK MAC MISS ATLAS 8U  
 RED LCHMN ON TARGET 1016E  
 RED BIEBER ELISA 3413  
 RED CUMNOCK STAR 139Z  
 RED LCHMN ISABELLE C1075

	BW	WW	YW	Milk	TM	
(CAA) EPD	+4.1	+41	+68	+13	+33	CE *
WTS	97	Frame 6.3	Wt 1780	Scrotal 39	cm	

- \* **Big Mac 302U** is a dark red, long made power bull with lots of hair.
- \* **Mac Fore 69H** was a dominant herd bull for us & these are the last sons he produced. They will add pounds to your calves at weaning.

**Lot 236** **BLACK HAMCO IDEAL 383U**

DSH 383U 1449776 March 11, 2008

IDEAL 1418 OF 8103 4286  
**PRAIRIELANE IDEAL 1418-0051**  
 PRAIRIELANE 033 ROSEBUD 4034

STEVENSON ROYCE 741C  
**BLACK HAMCO MS LASS ROYCE 112L**  
 BLACK MEADOWS LASS 148W

IDEAL 8103 OF ELDO 5110 5213  
 E E 4286 OF IDEAL 2240 1254  
 IDEAL 033 OF 7365 8263  
 PRAIRIELANE 8087 ROSEBUD 0190  
 GDAR ROYCE 131  
 AHLGRENS ESTELLA 2758 ETE  
 BLACK MEADOWS INDEPENDENCE  
 BLACK MEADOWS LASS 25R

	BW	WW	YW	Milk	TM	
(CAA) EPD	+1.6	+51	+86	+16	+42	CE **
WTS	82	Frame 5.6	Wt 1635	Scrotal 39.5	cm	

- \* **Ideal 383U** is a moderate framed, densely made bull with excellent muscle throughout.
- \* **His dam 112L** is a good ET Royce daughter out of the great donor 148W.
- \* **Could be used on cows or heifers.**

**Lot 239** **BLACK HAMCO IDEAL 517U**

DSH 517U 1449863 April 18, 2008

IDEAL 1418 OF 8103 4286  
**PRAIRIELANE IDEAL 1418-0051**  
 PRAIRIELANE 033 ROSEBUD 4034

SUMMITCREST HI FLYER 3B18  
**BLACK HAMCO MISS HI FLYER 103L**  
 GLENNIE M'BROOK LASS 32X

IDEAL 8103 OF ELDO 5110 5213  
 E E 4286 OF IDEAL 2240 1254  
 IDEAL 033 OF 7365 8263  
 PRAIRIELANE 8087 ROSEBUD 0190  
 HOFF HI FLYER SC 7134  
 SUMMITCREST LASS 229Y  
 PERRYVILLE RAFAEL 34T  
 GLENNIE M'BROOK LASS 7U

	BW	WW	YW	Milk	TM	
(CAA) EPD	+3.3	+61	+91	+20	+51	CE *
WTS	96	Frame 6.2	Wt 1670	Scrotal 39	cm	

- \* **A very well bred Ideal son** that is deep sided with the easy fleshing traits of his sire.
- \* **Dam is an ET full sister** to our 200L high selling bull for \$6500 to Black Meadows & is an excellent cow.
- \* **Impressive EPD's** on this bull.

**REFERENCE SIRE**  
**9 SONS SELL**

**Prairielane Ideal 1418-0051**  
 (see page 36)

**Lot 235** **BLACK HAMCO IDEAL 375U**

DSH 375U 1449769 March 10, 2008

IDEAL 1418 OF 8103 4286  
**PRAIRIELANE IDEAL 1418-0051**  
 PRAIRIELANE 033 ROSEBUD 4034

MCA COURTYARD 95  
**BLACK HAMCO MISS COURTYARD 153**  
 BLACK MEADOWS MIGNOLA 76'91

IDEAL 8103 OF ELDO 5110 5213  
 E E 4286 OF IDEAL 2240 1254  
 IDEAL 033 OF 7365 8263  
 PRAIRIELANE 8087 ROSEBUD 0190  
 MARRIOTT OF WR BAR 8055  
 MCA ANNAS ENCHANTRESS 93  
 GT MAXIMUM  
 YOUNG DALE MIGNOLA 34Y

	BW	WW	YW	Milk	TM	
(CAA) EPD	+5.6	+53	+83	+13	+40	CE *
WTS	102	Frame 6.1	Wt 1655	Scrotal 38.5	cm	

- \* **Ideal 375U** is a typical Ideal 005 son - thick made, deep middled on a moderate frame.
- \* **Dam 153L** is an ET daughter out of the Courtyard bull.
- \* **This power bull** will work well on cows.

**Lot 238** **BLACK HAMCO IDEAL 493U**

DSH 493U 1449850 April 5, 2008

IDEAL 1418 OF 8103 4286  
**PRAIRIELANE IDEAL 1418-0051**  
 PRAIRIELANE 033 ROSEBUD 4034

SAF FAME  
**BLACK HAMCO MISS MIG FAME 75L**  
 BLACK MEADOWS MIGNOLA 76'91

IDEAL 8103 OF ELDO 5110 5213  
 E E 4286 OF IDEAL 2240 1254  
 IDEAL 033 OF 7365 8263  
 PRAIRIELANE 8087 ROSEBUD 0190  
 MINERTS FORTUNE 2000  
 SAF ROYAL LASS 1027  
 GT MAXIMUM  
 YOUNG DALE MIGNOLA 34Y

	BW	WW	YW	Milk	TM	
(CAA) EPD	+3.4	+55	+83	+15	+42	CE *
WTS	84	Frame 6.0	Wt 1880	Scrotal 41	cm	

- \* **Ideal 493U** is a soggy, deep sided, moderate framed bull that looks a lot like his sire.
- \* **Dam is an ET Fame daughter** that has produced well.
- \* **Could be used on cows or heifers.**



**Lot 240** **BLACK HAMCO IDEAL 520U**

DSH 520U 1449519 April 23, 2008

IDEAL 1418 OF 8103 4286  
**PRAIRIELANE IDEAL 1418-0051**  
 PRAIRIELANE 033 ROSEBUD 4034

RITO 3M2 OF 5H11GT MAXIMUM  
**BLACK AGH MISS RITO MAX 13J**  
 KEMBAR LUCY 87G

IDEAL 8103 OF ELDO 5110 5213  
 E E 4286 OF IDEAL 2240 1254  
 IDEAL 033 OF 7365 8263  
 PRAIRIELANE 8087 ROSEBUD 0190  
 GT MAXIMUM  
 RITA 5H11 OF 1B14 RITO 9J9  
 MVF DIRECTOR 55A  
 KEMBAR LUCY 13B

	BW	WW	YW	Milk	TM	
(CAA) EPD	+4.4	+58	+91	+17	+46	CE *
WTS	95	Frame	7.0	Wt 1645	Scrotal	38 cm

- \* An Ideal 0051 son that is out of a proven, good uddered, older cow.
- \* Thick, deep sided, & correct made best describes this bull.
- \* Recommended for cows.

**Lot 242** **BLACK HAMCO IDEAL 548U**

DSH 548U 1449877 May 12, 2008

IDEAL 1418 OF 8103 4286  
**PRAIRIELANE IDEAL 1418-0051**  
 PRAIRIELANE 033 ROSEBUD 4034

YOUNG DALE BLACK PRINCE 3G  
**BLACK HAMCO MISS PRINCESS 17L**  
 BLACK HAMCO MISS NONE BETTER

IDEAL 8103 OF ELDO 5110 5213  
 E E 4286 OF IDEAL 2240 1254  
 IDEAL 033 OF 7365 8263  
 PRAIRIELANE 8087 ROSEBUD 0190  
 YOUNG DALE MONARCH 12E  
 CRESCENT CREEK LUCY 85E  
 RED AGH NONE BETTER 3F  
 BLACK HAMCO CASEY 4G

	BW	WW	YW	Milk	TM	
(CAA) EPD	+4.2	+66	+107	+23	+56	CE *
WTS	99	Frame	n/a	Wt 1770	Scrotal	41 cm

- \* Ideal 548U is very deep middled powerful bull that could add a lot of performance to your next calf crop.
- \* His dam is an CAA Elite cow that has produced very well.
- \* Recommend to use on cows.

**Lot 245** **BLACK HAMCO IDEAL 559U**

DSH 559U 1449884 May 27, 2008

IDEAL 1418 OF 8103 4286  
**PRAIRIELANE IDEAL 1418-0051**  
 PRAIRIELANE 033 ROSEBUD 4034

BLACK HAMCO TIBBIE LIMITED  
**BLACK HAMCO COUNTESS 289M**  
 BLACK HAMCO MISS MONARCH 4J

IDEAL 8103 OF ELDO 5110 5213  
 E E 4286 OF IDEAL 2240 1254  
 IDEAL 033 OF 7365 8263  
 PRAIRIELANE 8087 ROSEBUD  
 MVS LIMITED EDITION 10E  
 MVF TIBBIE 64C  
 YOUNG DALE MONARCH 12E  
 DOUBLE J COUNTESS 336B

	BW	WW	YW	Milk	TM	
(CAA) EPD	+4.5	+56	+91	+14	+42	CE *
WTS	92	Frame	n/a	Wt 1650	Scrotal	43cm

- \* Another typical Ideal son that is made the right way & has great performance EPD's.
- \* Add some great Angus genetics to your herd.
- \* Recommended for cows.

**Lot 241** **BLACK HAMCO IDEAL 528U**

DSH 528U 1449867 April 27, 2008

IDEAL 1418 OF 8103 4286  
**PRAIRIELANE IDEAL 1418-0051**  
 PRAIRIELANE 033 ROSEBUD 4034

YOUNG DALE TRAVELER 168L  
**BLACK HAMCO ERICA 253P**  
 YOUNG DALE ERICA 193L

IDEAL 8103 OF ELDO 5110 5213  
 E E 4286 OF IDEAL 2240 1254  
 IDEAL 033 OF 7365 8263  
 PRAIRIELANE 8087 ROSEBUD 0190  
 GDAR SVF TRAVELER 228D  
 SHONDRIL BARESS 15S  
 YOUNG DALE MONARCH 12E  
 SHONDRIL BARESS 15S

	BW	WW	YW	Milk	TM	
(CAA) EPD	+3.4	+55	+83	+15	+42	CE **
WTS	84	Frame	5.8	Wt 1590	Scrotal	38 cm

- \* When you see this group of Ideal sons you will appreciate why we think so much of him.
- \* This moderate framed, easy fleshing bull will add some extra performance to his progeny.
- \* Could use on cows or heifers

**Lot 243** **BLACK HAMCO IDEAL 552U**

DSH 522U 1449871 May 19, 2008

IDEAL 1418 OF 8103 4286  
**PRAIRIELANE IDEAL 1418-0051**  
 PRAIRIELANE 033 ROSEBUD 4034

FAR KRUGERRAND 410H  
**BLACK HAMCO LASS 61P**  
 BLACK HAMCO CASEY 5G

IDEAL 8103 OF ELDO 5110 5213  
 E E 4286 OF IDEAL 2240 1254  
 IDEAL 033 OF 7365 8263  
 PRAIRIELANE 8087 ROSEBUD 0190  
 KRUGERRAND OF DONAMERE 490  
 FAR ERIANNA 286F  
 DA ES RO CASEY 629  
 BLACK MEADOWS LASS 148W

	BW	WW	YW	Milk	TM	
(CAA) EPD	+2.5	+60	+99	+16	+45	CE *
WTS	99	Frame	n/a	Wt 1660	Scrotal	41 cm

- \* Ideal 522U is another deep ribbed, easy fleshing, stout made bull.
- \* Well bred dam Krugerrand 410H out of our CAA Elite Casey 5G cow.

**REFERENCE SIRE**  
**1 SON SELLS**

**Prairielane 7451-2014-5004**  
 (see page 39)

**Lot 247** **BLACK HAMCO NEW DEAL 558U**

DSH 558U 1449883 May 25, 2008

PRAIRIELANE IDEAL 7451-2014  
**PRAIRIELANE 7451-2014-5004**  
 PRAIRIELANE 4002 BLACK 6037

B/R NEW FRONTIER 095  
**BLACK HAMCO FRONTIER LASS 99R**  
 BLACK HAMCO LASS 5M

IDEAL 7451 OF 8103 4465  
 PRAIRIELANE MAX DUCHESS 3050  
 BANG 2083 PRAIRIELANE 4002  
 PRAIRIELANE 033 BLACK 4047  
 B/R NEW DESIGN 03E  
 WHITE FENCE PRIDE H1  
 SAF FAME  
 BLACK HAMCO CASEY TIBBIE 179K

	BW	WW	YW	Milk	TM	
(CAA) EPD	+1.4	+52	+91	+15	+40	CE ***
WTS	80	Frame	n/a	Wt 1640	Scrotal	38.5 cm

- \* New Deal 558U is built like his sire - stout made, wide, deep muscular hind quarter.
- \* Dam is a good uddered, easy fleshing daughter of New Frontier 095.
- \* This performance bull could be used on heifers.

**REFERENCE SIRE**  
**1 SON SELLS**



**Connealy Lead On**

Reg # (Cdn) 1179972

Connealy Dateline TC Dividend 963  
S: Connealy Leadtime D: Eligence Plus of Conanga  
Ruths Rona of Conanga Eura Cap of Conanga

CAA	B.W.	W.W.	Y.W.	Milk	TM
EPD	+2.3	+52	+101	+30	+56

- \* Medium framed, powerful phenotype that transmits tremendous muscle relative to his +2.2 BW EPD.
- \* One of only 10 'Time Tested' curve benders that combines a +2.5 to +100 spread with at least .90 accuracy.
- \* +38.74 \$W ranks in the top 1% of the breed—daughters are moderate framed with added thickness & good udder quality.
- \* A +11 heifer pregnancy EPD adds to his maternal strength

**Lot 248** | **BLACK HAMCO LEAD ON 231U**

DSH 231U 1449668 February 23, 2008 (AI)

CONNEALY LEADTIME CONNEALY DATELINE  
CONNEALY LEAD ON RUTHS RONA OF CONANGA  
ELIGENCE PLUS OF CONANGA TC DIVIDEND 963  
EURA CAP OF CONANGA  
B/R NEW FRONTIER 095 B/R NEW DESIGN 036  
BLACK HAMCO ERICA 18N WHITE FENCE PRIDE H1  
YOUNG DALE ERICA 160L YOUNG DALE MONARCH 12E  
SHONDRIL BARESS 15S

	BW	WW	YW	Milk	TM	
(CAA) EPD	+3.2	+50	+93	+23	+48	CE **
WTS	89	Frame 6.9	Wt 1970	Scrotal 38.5	cm	

- \* Lead on 231U is a long bodied, larger framed bull with a great pedigree.
- \* His dam 18N is one of our top Black cows out of the New Frontier 095 bull.
- \* Good EPD's on this bull.
- \* Could be used on cows or heifers.

**REFERENCE SIRE**  
**1 SON SELLS**



**SAV Final Answer**

Reg # (Cdn) 1061938

GDAR Traveler 71 Bonview Bando 598  
S: Sitz Traveler 8180 D: SAV Emulous 8145  
Sitz Everelda Entense 1137 SAV Sky Emulous 2124

CAA	B.W.	W.W.	Y.W.	Milk	TM
EPD	-1.0	+61	+105	+20	+51

- \* Proven calving ease sire that bends the growth curve offering exceptional performance, maternal strength & carcass quality
- \* Sires more body depth, muscle & fleshing ability

**Lot 249** | **BLACK HAMCO FINAL ANSWER 3U**

DSH 3U 1449520 January 18, 2008 (AI)

SITZ TRAVELER 8180 GDAR TRAVELER 71  
SAV FINAL ANSWER 0035 SITZ EVERELDA ENTENSE 1137  
SAV EMULOUS 8145 BON VIEW BANDO 598  
SAV SKY EMULOUS 2124  
PRAIRIELANE IDEAL 1418-0051 IDEAL 1418 OF 8103 4286  
BLACK HAMCO COUNTESS 313S PRAIRIELANE 033 ROSEBUD 4034  
BLACK HAMCO COUNTESS 229N BLACK HAMCO TIBBIE LIMITED  
BLACK HAMCO MISS MONARCH 4J

	BW	WW	YW	Milk	TM	
(CAA) EPD	-3.5	+56	+87	+16	+44	CE ***
WTS	50	Frame 5.0	Wt 1655	Scrotal 38	cm	

- \* A smaller framed, heavily muscled bull that started out small but has developed into an impressive bull.
- \* Final Answer is very popular sire due to his outstanding progeny.
- \* Dam is a good young Ideal daughter.
- \* A very safe calving ease sire



**REFERENCE SIRE  
3 SONS SELL**

**Prairielane Ideal 1008-3025  
Black/Red Factor**

(see page 23)

**Lot 251** **BLACK HAMCO RC IDEAL 308U**

AGH 308U 1449910 March 4, 2008

PRAIRIELANE IDEAL 8116-1008 PRAIRIELANE IDEAL 1418-8116  
**PRAIRIELANE IDEAL 1008-3025** PRAIRIELANE 6060 DUCHESS 9150  
 PRAIRIELANE 6122 BANDOLER 8042 PRAIRIELANE MAX 3058 6122  
 PRAIRIELANE 2083 BANDOLER 5004  
 RED SSS HIGH MARK 272D RED SSS HIGHLINE 402M  
**RED AGH MISS HIGH MARK 37J** RED SSS MISS REDCAP 87T  
 RED PLAY PEN ALEXANDRA 19G RED NORTHLINE EPIC 2E  
 RED MAC ALEXANDRA 1A

	BW	WW	YW	Milk	TM	
(CAA) EPD	+0.5	+36	+61	+16	+34	CE **
WTS	94	Frame 6.8	Wt 1985	Scrotal	42 cm	

- \* Ideal 308U is another Black/Red factor bull that is a bigger, Powerful bull with added length.
- \* This is a bull that will catch your eye on sale day.
- \* Could be used on cows or heifers

**Lot 250** **BLACK HAMCO RC IDEAL 254U**

DSH 254U 1449680 February 25, 2008

PRAIRIELANE IDEAL 8116-1008 PRAIRIELANE IDEAL 1418-8116  
**PRAIRIELANE IDEAL 1008-3025** PRAIRIELANE 6060 DUCHESS 9150  
 PRAIRIELANE 6122 BANDOLER 8042 PRAIRIELANE MAX 3058 6122  
 PRAIRIELANE 2083 BANDOLER 5004  
 RED BIEBER CLASSIC 6753 RED BIEBER CLASSIC 4515  
**RED HAMCO ELISA 131M** RED BIEBER DESIGN 3679  
 RED BIEBER ELISA 3413 RED BIEBER LUCAS 2846  
 RED RAB EISA 516-7284

	BW	WW	YW	Milk	TM	
(CAA) EPD	+2.9	+40	+72	+14	+34	CE *
WTS	95	Frame 5.6	Wt 1785	Scrotal	41.5 cm	

- \* A black/red factor bull that is long bodied, moderate framed, with eye appeal & performance.
- \* Dam is a Bieber bred cow from the high performance—Elisa family.
- \* Just so everyone understands - A Black/Red Factor bull used on black cows will result in black calves. If the black cow has the red factor gene as well, then 1/2 of the calves will be red, 1/2 will be black.
- \* If used on Red cows, then 50% will be Black & 50% will be Red.

**Lot 252** **BLACK HAMCO RC IDEAL 580U**

DSH 580U 1501647 July 3, 2008

PRAIRIELANE IDEAL 8116-1008 PRAIRIELANE IDEAL 1418-8116  
**PRAIRIELANE IDEAL 1008-3025** PRAIRIELANE 6060 DUCHESS 9150  
 PRAIRIELANE 6122 BANDOLER 8042 PRAIRIELANE MAX 3058 6122  
 PRAIRIELANE 2083 BANDOLER 5004  
 RED HAMCO COUNT ELWAY 63K RED LMB ELWAY 938  
**RED HAMCO COOPER 203M** RED BIEBER COUNTESS 3244  
 RED HAMCO TIARA IMPACT 25H RED BIEBER IMPACT 4399  
 RED HAMCO TIARA OF TAG-A-LONG

	BW	WW	YW	Milk	TM	
(CAA) EPD	+2.6	+39	+68	+15	+34	CE **
WTS	81	Frame n/a	Wt 1620	Scrotal	37.5 cm	

- \* A Black/Red factor Ideal 3025 son with length, style & balanced EPD's.
- \* Dam is out of the strong Tiara Red Angus Family. Grand dam 25H is an CAA Elite cow.
- \* Would work well on heifers or cows.



Lot 251 - Black Hamco RC Ideal 308U

## Thank you to our 2009 Hamco Buyers

- |   |   |   |
|---|---|---|
| <ul style="list-style-type: none"> <li>* EUR Ranch</li> <li>* Gamache Farms</li> <li>* Kevin Baraniuk</li> <li>* Magnusville Farms</li> <li>* Willowmede Farms</li> <li>* Ferme R Bordeleau</li> <li>* Townview Farms</li> <li>* Bootis Black Angus</li> <li>* Curtis Stambuski</li> <li>* F Bar Ranch</li> <li>* Airway Farms</li> <li>* Abernathy Farms</li> <li>* Douglas DeBlonde</li> <li>* Richard Popiel</li> <li>* Richard &amp; Tom Ching</li> <li>* GCT Wytinck</li> <li>* Darwin Claeys Ltd.</li> <li>* Coates Simmental</li> <li>* Juergen Schubert</li> <li>* Dennis Wood</li> <li>* Wytinck Farms Ltd.</li> <li>* Gerald Mangin</li> <li>* Russell Loewen</li> <li>* Arnold Funk</li> <li>* KEO Farms</li> <li>* Ponderosa Farms</li> <li>* Steven &amp; Carole Pauls</li> <li>* Riley's Red Angus</li> <li>* Corrie Martens</li> <li>* Cory Dalzell</li> <li>* JDV Land &amp; Cattle Co.</li> <li>* Gork Bros.</li> <li>* Colin &amp; Carolyn Davies</li> <li>* Kyle McPhail</li> <li>* Derek &amp; Lynda Heywood</li> <li>* W. Lovett Farms Ltd.</li> </ul> | <ul style="list-style-type: none"> <li>* Kinared Stock Farms</li> <li>* Abe Driedger</li> <li>* Halarda Farms</li> <li>* Elk Creek Farms Ltd.</li> <li>* Andrew Devos</li> <li>* Stephen &amp; Adrienne Vandersluis</li> <li>* George Hird</li> <li>* Lorne Rossnagel</li> <li>* Mark Siobhain</li> <li>* William Magwood</li> <li>* Barry Pogson</li> <li>* Joshua Sawchuk</li> <li>* Woodlands Farms</li> <li>* Paul &amp; Sally Calcott</li> <li>* C&amp;T Reynolds Farms</li> <li>* Robert VanDamme</li> <li>* Gerald Tack</li> <li>* Laurie Gardiner</li> <li>* Philip &amp; Donna Marie Jensen</li> <li>* Glen &amp; Ron Paddock</li> <li>* Douglas Kerr</li> <li>* James Morrison</li> <li>* Ernest Beasse</li> <li>* Alfred Bourrier</li> <li>* Jason Bridge</li> <li>* Delmar &amp; Elton Dickey</li> <li>* Prairielane Farms</li> <li>* Harry &amp; Shirley Mooney</li> <li>* Sloane Agri Ventures Ltd.</li> <li>* Russell Klapat</li> <li>* Grant Edel</li> <li>* Les &amp; Gord Rempel</li> <li>* John Frank</li> <li>* Holmfield Colony</li> <li>* Morgan Sigurdson</li> </ul> | <ul style="list-style-type: none"> <li>* B &amp; M Morgan Farms</li> <li>* Tim Fehr</li> <li>* Art Richmond</li> <li>* Larry Schindt</li> <li>* Divanway Holsteins</li> <li>* Robert Bevan</li> <li>* T &amp; M Olmstead Farms</li> <li>* Darrell Degreave</li> <li>* Mark Martin</li> <li>* M&amp;J Livestock</li> <li>* Wayne McPhail</li> <li>* Cory Manning</li> <li>* Mel Toews</li> <li>* Fred Dane</li> <li>* Wellwood Colony</li> <li>* Dwayne Hamilton</li> <li>* Marshall Dairy</li> <li>* Mike Bertholet</li> <li>* Fred Johnson</li> <li>* James &amp; Charles Baldock</li> <li>* Brian Ganske</li> <li>* Jim Martin</li> <li>* Bill Braun</li> <li>* Howard Sager</li> <li>* Dave Fehr</li> <li>* John Glover</li> <li>* Peter A Wiebe</li> <li>* Lionel Ricard</li> <li>* Ian Finley</li> <li>* Jim Smith</li> <li>* Blackhawk Angus</li> <li>* Jeffrey &amp; Landon Balon</li> <li>* Mark O'Connor</li> <li>* Doane Brothers</li> <li>* Fair Valley Polled Simmentals</li> </ul> |
|---|---|---|



**Terms:** The terms of sale are cash or cheque payable at par. Settlement to be made immediately after the completion of the sale. All settlements must be made with the clerk of the sale before any cattle will be released.

**Disputes:** In case of disputes, bidding will be re-opened between the parties involved. If no further bid is made, the buyer will be the person from whom the auctioneer accepted the last bid. The auctioneer's decision of all disputes is final.

**Announcements:** All announcements made from the auction block will take precedence over the printed matter in the catalogue. Buyers should pay close attention to any such announcement.

**Purchaser's Risk:** Each animal becomes the risk of the purchaser as soon as sold.

**Insurance:** Insurance agents will be available on sale day.

**Accidents:** Although every precaution will be taken to protect the safety and comfort of buyers, neither the sale management nor the auctioneer assume any responsibility in this matter and disclaim any liability, legal or otherwise, in the event of accident or loss property.

**Liabilities:** All persons attending the sale do so at their own risk and sellers assume no liability, legal or otherwise, for any accidents occurring in or about the premises.

**Hamco Cattle Co.  
12th Angus Bull Sale**

**NOTES**



Please bring this catalogue with you to the Sale

**FR: Hamco Cattle Co.  
“The Hamiltons”  
Box 143  
Glenboro, Manitoba  
R0K 0X0**

**TO:**



**HAMCO CATTLE CO.  
12TH ANNUAL ANGUS BULL SALE**

**SATURDAY MARCH 20, 2010  
1:00 p. m.**

**Indoors at the farm**

